

Dual-Element Isotope Analysis of Desphenylchloridazon to Investigate Its Environmental Fate in a Systematic Field Study: A Long-Term Lysimeter Experiment

Aileen Melsbach,[○] Clara Torrentó,[○] Violaine Ponsin, Jakov Bolotin, Laurence Lachat, Volker Prasuhn, Thomas B. Hofstetter, Daniel Hunkeler, and Martin Elsner*



Cite This: *Environ. Sci. Technol.* 2020, 54, 3929–3939



Read Online

ACCESS |



Metrics & More

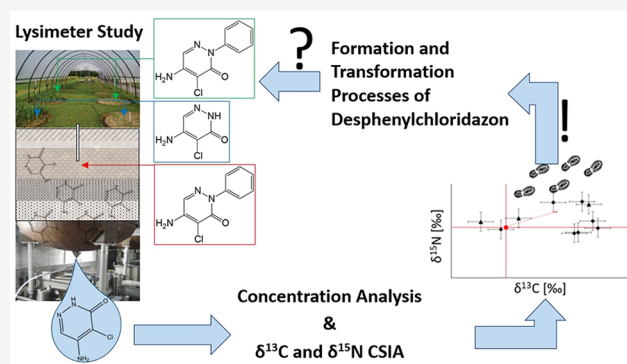


Article Recommendations



Supporting Information

ABSTRACT: Desphenylchloridazon (DPC), the main metabolite of the herbicide chloridazon (CLZ), is more water soluble and persistent than CLZ and frequently detected in water bodies. When assessing DPC transformation in the environment, results can be nonconclusive if based on concentration analysis alone because estimates may be confounded by simultaneous DPC formation from CLZ. This study investigated the fate of DPC by combining concentration-based methods with compound-specific C and N stable isotope analysis (CSIA). Additionally, DPC formation and transformation processes were experimentally deconvolved in a dedicated lysimeter study considering three scenarios. First, surface application of DPC enabled studying its degradation in the absence of CLZ. Here, CSIA provided evidence of two distinct DPC transformation processes: one shows significant changes only in $^{13}\text{C}/^{12}\text{C}$, whereas the other involves changes in both $^{13}\text{C}/^{12}\text{C}$ and $^{15}\text{N}/^{14}\text{N}$ isotope ratios. Second, surface application of CLZ mimicked a realistic field scenario, showing that during DPC formation, $^{13}\text{C}/^{12}\text{C}$ ratios of DPC were depleted in ^{13}C relative to CLZ, while $^{15}\text{N}/^{14}\text{N}$ ratios remained constant. Finally, CLZ depth injection simulated preferential flow and demonstrated the importance of the topsoil for retaining DPC. The combination of the lysimeter study with CSIA enabled insights into DPC transformation in the field that are superior to those of studies of concentration trends.



INTRODUCTION

Groundwater is one of the most important drinking water resources¹ and, therefore, constantly screened for contaminants.^{2–5} Due to their extensive application in agriculture, pesticides and their metabolites⁶ are commonly detected in ground and surface water. A prominent example is desphenylchloridazon (DPC), the main metabolite of the herbicide chloridazon (CLZ). CLZ is a selective systemic herbicide that is used to control broad-leaved weeds in the agricultural production of Swiss chard, red beet, and sugar beet.^{6–11} The metabolite DPC is a compound of concern as it is continuously formed from CLZ. The continuous input of newly formed DPC makes it challenging to evaluate its environmental transformation from concentration data over time. Detection of DPC has increasingly been reported exceeding concentrations of 10 $\mu\text{g}/\text{L}$ in natural water bodies.^{6,11–14} DPC can be transported into ground and surface water by precipitation events as it is water soluble (490 mg/L) and has a lower tendency to bind to the soil (Freundlich constant K_{foc} of 50 mL/g) than CLZ (K_{foc} of 199 mL/g). Additionally, DPC has a high leaching potential, which is indicated by the groundwater ubiquity score (GUS) of

5.5, a parameter used to evaluate pesticides for their potential to seep into the groundwater.^{9,15,16} Thus, there is great interest in the question whether DPC can be subjected to further transformation. The fate of DPC, however, is not well understood.^{2,17,18} It is known that DPC is a persistent and polar compound. In soil, it can be further transformed into methyl-desphenylchloridazon (MDPC, Figure S1).^{10,12,19,20} Whether there is a wider range of degradation pathways remains unclear.

Current attempts to quantify the degradation of organic micropollutants are often based on molar metabolite-to-parent-compound ratios. This is an analytical approach based on concentration measurements. It is advantageous to quantify degradation even at low concentration ranges and is simple to use.²¹ However, in the case of DPC, which may be

Received: July 30, 2019

Revised: December 21, 2019

Accepted: March 2, 2020

Published: March 3, 2020



simultaneously formed while undergoing further transformation (Figure S1), metabolite-to-parent ratios can lead to erroneous interpretations.²² An additional confounding factor is a different drainage-dependent re-mobilization of the parent compound and the metabolite due to differences in their mobility. Thus, concentrations may fluctuate in a nontrivial manner, making it difficult, if not impossible, to inform about how much of the DPC has been transformed. Consequently, a complementary method is needed to detect transformation if metabolite analysis alone is not conclusive.

Compound-specific stable isotope analysis (CSIA) allows for the identification of degradation processes by analyzing variations of natural stable isotope abundances of different isotopic elements during (bio)degradation and transformation of organic contaminants.^{23–26} While CSIA of polar micro-pollutants has rarely been performed at field scales,²⁶ analytical methods for the analysis of carbon ($^{13}\text{C}/^{12}\text{C}$) and nitrogen ($^{15}\text{N}/^{14}\text{N}$) isotope ratios of DPC have recently become available.²⁷ So far, stable isotope studies of DPC have been carried out neither in laboratory experiments nor in field applications. As illustrated in Figure S1, unique insight into the formation and subsequent transformation of DPC would be possible. On the one hand, $^{13}\text{C}/^{12}\text{C}$ and $^{15}\text{N}/^{14}\text{N}$ ratios of DPC are expected to show the isotopic signature of the pyridazinone ring in the precursor CLZ. When CLZ is transformed, its phenyl ring is first oxidized and then cleaved off. Thus, any isotope effect-induced changes in $^{13}\text{C}/^{12}\text{C}$ and $^{15}\text{N}/^{14}\text{N}$ ratios will be manifested in the molecular average of CLZ and in the oxidized phenyl part that is cleaved off. In contrast, none of the molecular positions of the pyridazinone ring are involved in the reaction, meaning that only secondary kinetic isotope effects occur so that the isotope ratios within the pyridazinone ring remain mainly unaffected when they end up in DPC (Figure S1). If, however, further transformation of DPC takes place, this process is expected to result in pronounced changes in isotope ratios in DPC because, now, carbon and nitrogen atoms are directly involved (primary isotope effect). This would lead to carbon and nitrogen isotope fractionation in DPC, giving a strong indication of further DPC transformation.²⁸ CSIA of DPC, therefore, holds promise to identify both processes, formation of DPC from CLZ as well as further independent transformation of DPC. According to the current mechanistic picture, DPC is formed only from CLZ and transformed through N-methylation.^{19,20,29} Thus, the combined analysis of carbon and nitrogen isotope ratios of DPC may offer new insights into its fate in soil leachate.

Evidence from CSIA may be inconclusive, however, if physical processes (e.g., multiple sorption–desorption steps, dissolution from the nonaqueous phase, volatilization/diffusion, dispersion) or the heterogeneity of the system, the soil in this case, affect degradation-induced changes in isotope ratios. For example, a freshly dissolved compound, which has not been transformed yet, can mix with water containing the contaminant that has already undergone varying degrees of degradation and thus isotope fractionation.^{30–32} Consequently, the transformation-induced isotope ratios in the degraded fraction might not be discernible any longer.^{33,34} When applying CSIA to a field site either for the interpretation of a compound's environmental fate or for monitoring the success of remediation processes, it is therefore suggested to combine it with complementary approaches to obtain as many lines of evidence as possible.^{30,35,36}

Thus, the aim of this study was to explore different complementary and innovative approaches for assessing the long-term environmental fate of DPC in drainage water after agricultural application over a period of 3 years. To that end, we combined concentration measurements with the analysis of carbon and nitrogen isotope ratios in a comprehensive and systematic study in a well-characterized model lysimeter system. This lysimeter system enables us to mimic pesticide fate in a natural soil environment under high control over environmental and hydrological factors (i.e., soil type and humidity, precipitation levels, temperature, evapotranspiration, etc.). To separate the relevant transport and transformation processes, these complementary approaches were integrated into a dedicated experimental design where CLZ and DPC were applied in three different scenarios (Figure S2): (i) DPC was applied to the lysimeter directly, without the presence of CLZ, to investigate whether further DPC transformation is observable in drainage water and whether this transformation is detectable from analyzing carbon and nitrogen isotope ratios of DPC when interfering simultaneous formation of DPC can be excluded. (ii) The concurrent formation of DPC from CLZ and potential DPC transformation were evaluated through surface application of CLZ to the lysimeters. (iii) To simulate the preferential flow and to study whether DPC formation and transformation are also occurring below the topsoil, CLZ was injected below the root zone. For each scenario, these complementary approaches were tested with two different soil types through a replication of the lysimeter studies with moraine and gravel soil.

■ EXPERIMENTAL SECTION

Experimental Setup of Lysimeter Experiments. For this study, the lysimeter facility from Agroscope, located in Zürich-Reckenholz, Switzerland, was used. The facility itself and the characteristics of the lysimeters are described in detail by Torrentó et al.³⁷ Briefly, the site consisted of 12 gravitation lysimeters (L) (3.14 m² surface area, 2.5 m depth, approximately 14 000 kg of soil in each) filled with two soil types (gravel/moraine). Both soil types consisted of repacked Cambisol. Cambisols, widely and intensively used as agricultural land, are among the most extensive soil types on earth, extending over about 11% of the global land surface.³⁸ The soils used in this study differed in the B horizon and the draining properties of the parent material and thus they were expected to show a different extent of preferential flow.³⁷ Gravel soil was represented by well-drained sandy loamy Cambisol (L1–L6), while moraine soil consisted of a poorly drained loamy Cambisol (L7–L12) (Table S1). Six of these lysimeters were used for this study (three of each soil type). The lysimeters were planted in 2014 with corn (*Zea mays* L.) followed by sugar beet (*Beta vulgaris* ssp. *vulgaris* var. *altissima* Doel) in 2015, with corn (*Z. mays* L.) again in 2016 and finally with broccoli, Chinese cabbage, lettuce, and leek in 2017. A total of 3.0 kg/ha (0.96 g/lysimeter) of CLZ was applied on the surface of two lysimeters (L4 and L8) simulating the scenario of pesticide application at the three- to four-leaf stage in the field.¹⁰ To simulate preferential transport through the topsoil, two additional lysimeters were used (L6 and L7), where 2.0 g of CLZ was injected in each lysimeter at a depth of 40 cm at 11 injection points uniformly distributed over the area of each lysimeter using a metal rod connected to a gear pump through a Teflon tube. Additionally, 3.2 kg/ha (1.0 g/lysimeter) DPC was applied on the surface of two lysimeters

(L1 and L12). In addition to CLZ or DPC, the following tracers were applied at the same time as the pesticides: uranine (1.3 kg/ha) and NaBr (500 kg/ha) to lysimeters L1 and L12, uranine (1.3 kg/ha) to lysimeters L4 and L8, and uranine (0.4 g injected in each lysimeter) to lysimeters L6 and L7. Bromide was used as a conservative tracer and uranine (K_{loc} of 120 mL/g) as a marker for preferential leaching shortly after pesticide application.³⁷ A detailed setup is shown in the Supporting Information (Sections II.2 and II.3). Details about application methods can be found in Torrentó et al.³⁷ All lysimeters were irrigated artificially, and the seepage water was collected for analysis over a time period of 3 years (Table S2).

Concentration Measurements of CLZ, DPC, and MDPC. For concentration measurements of CLZ, DPC, and MDPC, an Ultimate 3000 RS high-pressure liquid chromatograph (Dionex, Thermo Fisher Scientific, Waltham, MA) coupled to a 4000 hybrid triple quadrupole–linear ion trap mass spectrometer (QTRAP, ABSciex, Framingham, MA) was used. Five microliters were injected onto an Acquity UPLC BEH Shield RP18 column (100 mm × 2.1 mm, 1.7 μm, Waters, Milford, MA) maintained at 25 °C. The separation was performed at a flow rate of 0.4 mL/min using a binary mobile phase system consisting of 0.05% formic acid in water (mobile phase A) and 0.05% formic acid in acetonitrile (mobile phase B) according to the following gradient program: 5–15% phase B in 2 min, 15–100% phase B in 4 min, holding at 100% phase B for 2 min, and re-equilibration at 2% phase B for 6 min. Detection was performed in electrospray positive ionization (ESI+) using the multiple reaction monitoring (MRM) mode by monitoring both a quantifier (Q) and a qualifier (q) transition ion for each compound. Precursor and fragment ions (m/z) were 222.1 and 104.0 (Q) or 77.0 (q) for CLZ, 146.0 and 117.0 (Q) or 66.0 (q) for DPC, 160.0 and 117.0 (Q) or 88.0 (q) for MDPC, and 227.0 and 108.0 (Q) or 81.0 (q) for CLZ- d_5 , respectively (Table S3). Quantification was performed using standard curves calculated from standard solutions of CLZ, DPC, and MDPC at 0.25, 0.5, 1, 3, 5, and 10 ng/mL, each containing deuterated CLZ- d_5 as an internal standard at a constant concentration of 2 ng/mL. The limits of quantification were 0.05 μg/L for CLZ, 0.4 μg/L for DPC, and 0.1 μg/L for MDPC. For those drainage water samples with CLZ, DPC, and MDPC concentrations lower than 0.2 μg/L, solid-phase extraction (SPE) of 20 mL samples was performed using 6 mL cartridges packed with 0.2 g of Bakerbond SDB-1 sorbent and 0.2 g of Septra ZT sorbent, as described by Torrentó et al.³⁹ After SPE, the extracts were analyzed by ultrahigh-performance liquid chromatography–quadrupole time-of-flight mass spectrometry (UHPLC–QTOF-MS). The method is briefly described in the Supporting Information (Section II.5).

Large-Volume Solid-Phase Extraction. For isotope analysis, all lysimeter samples were filtered through 0.7 μm glass fiber filters and were concentrated by SPE using the method described in Torrentó et al.,³⁹ as detailed in the Supporting Information (Section II.6).

Elemental Analyzer-Isotope Ratio Mass Spectrometry (EA-IRMS) Measurement for the Determination of Reference Values. Carbon and nitrogen isotope reference values of our in-house standards of CLZ, DPC, and MDPC were determined by elemental analysis-isotope ratio mass spectrometry (EA-IRMS) according to the method of Meyer et al.⁴⁰ The system consisted of a EuroEA (Euro Vector, Milano, Italy) coupled with a Finnigan MAT 253 IRMS via a Finnigan ConFlo III interface (Thermo Fisher Scientific, Bremen,

Germany). For calibration, USG 40, USG 41 (L-glutamic acid), and IAEA 600 (caffeine), supplied by the International Atomic Agency (IAEA), were used as organic reference materials.

Carbon ($\delta^{13}\text{C}$) and nitrogen ($\delta^{15}\text{N}$) isotope signatures are usually expressed using the δ notation in per mille as described in eqs 1 and 2, respectively. There, the isotope ratios ($^{13}\text{C}/^{12}\text{C}_{\text{sample}}$ and $^{15}\text{N}/^{14}\text{N}_{\text{sample}}$) are stated relative to the international references Pee Dee Belemnite (V-PDB) for carbon and air for nitrogen.

$$\delta^{13}\text{C} = \frac{^{13}\text{C}/^{12}\text{C}_{\text{sample}} - ^{13}\text{C}/^{12}\text{C}_{\text{reference}}}{^{13}\text{C}/^{12}\text{C}_{\text{reference}}} \quad (1)$$

$$\delta^{15}\text{N} = \frac{^{15}\text{N}/^{14}\text{N}_{\text{sample}} - ^{15}\text{N}/^{14}\text{N}_{\text{reference}}}{^{15}\text{N}/^{14}\text{N}_{\text{reference}}} \quad (2)$$

Carbon Isotope Analysis of DPC by Liquid Chromatography (LC)-IRMS. For carbon isotope analysis of DPC, we applied the method of Melsbach et al.²⁷ Briefly, 10 to 100 μL of SPE extracts reconstituted in ultrapure water were injected into an LC-IRMS Dionex system consisting of an Ultimate 3000 HPLC pump and an Ultimate 3000 autosampler (Thermo Fisher Scientific) coupled via an LC-Isolink interface with a Delta V Advantage IRMS (Thermo Fisher Scientific). Chromatography was accomplished using a Sentry guard column (3 μm, 20 mm) and an Atlantis T3 column (3 μm, 100 mm, Waters) at a flow rate of 500 μL/min. Phosphoric acid at pH 2 was chosen as the mobile phase. The method was run isocratically at room temperature. The analytes were converted by wet oxidation at a temperature of 99.9 °C after the separation unit. There, 90 g/L $\text{Na}_2\text{S}_2\text{O}_8$ and phosphoric acid (1.5 M H_3PO_4) were introduced at a flow rate of 30 μL/min. The vacuum inside the IRMS was 2×10^{-6} mbar. Its ion source was set to an accelerating voltage of 3 kV and an electron ionization energy of 124 eV. The isotope ratios were calibrated using our laboratory monitoring gas (CO_2), which had previously been calibrated against the international standard RM8563 (CO_2), supplied by the IAEA.

Derivatization of DPC for Nitrogen Isotope Analysis. Nitrogen isotope analysis was conducted using the derivatization procedure proposed by Melsbach et al.²⁷ Briefly, DPC was methylated to MDPC by adding an excess of greater than 160 $n_{\text{analyte}}/n_{\text{TMSD}}$ (140 μL of a 2 M TMSD solution) into a vial containing a standard or a SPE extract reconstituted in 1 mL of methanol. The vial was crimped tightly before putting it into a 70 °C water bath for 2 h. For samples from lysimeters with CLZ depth injection, the volume of the 2 M TMSD solution added to the reconstituted SPE extracts was increased to 200 μL to ensure complete derivatization, as concentrations of DPC were up to an order of a magnitude higher compared to those of the other lysimeter samples. Afterwards, the solvent was evaporated to dryness. The sample was then reconstituted in 50 μL of acetone.

Separation of Drainage Sample Fractions for Analysis of DPC and MDPC. For drainage water samples from the lysimeters where CLZ was applied on the surface and for which the ratio of DPC to naturally formed MDPC was greater than 10%, preparative HPLC was used prior to derivatization to isolate this naturally formed MDPC and thus to avoid interferences in the isotopic signature of DPC when subjected to methylation in the derivatization procedure. The method is briefly summarized in the Supporting Information (Section

II.7).²⁷ Additionally, both DPC and MDPC fractions were used for $\delta^{15}\text{N}$ isotope analysis when possible. For samples with an MDPC-to-DPC ratio <10%, no preparative HPLC method was applied prior to derivatization, as the influence of the isotope ratio of MDPC on the isotope ratio of derivatized DPC is negligible and lies within the measurement error for nitrogen CSIA ($\pm 1\%$) of the developed ^{15}N gas chromatography (GC)-IRMS method.²⁷

Nitrogen Isotope Analysis of DPC and MDPC. The method is described by Melsbach et al.²⁷ Briefly, a TRACE GC Ultra gas chromatograph (Thermo Fisher Scientific, Milan, Italy) coupled with a Finnigan MAT 253 IRMS (Thermo Fisher Scientific, Bremen, Germany) was used. A Finnigan Combustion III interface (Thermo Fisher Scientific) connected both instruments. The analytes were combusted at a temperature of 1030 °C with a NiO tube/CuO–NiO reactor (Thermo Fisher Scientific). The gas chromatograph contained a DB-1701 column (30 m \times 0.25 mm \times 1 μm , J&W Scientific, Santa Clara, CA). Helium (grade 5.0) at a flow rate of 1.4 mL/min was used as a carrier gas. Injection was carried out with a GC Pal autosampler (CTC, Zwingen, Switzerland). A sample volume ranging between 1 and 3 μL was injected into a splitless liner (Thermo Fisher Scientific, Australia) at a temperature of 250 °C. The GC oven was programmed to start at a temperature of 100 °C (held for 1 min) and ramped with 25 °C/min to 240 °C and with 10 °C/min to 280 °C (held for 5 min). The isotope ratios were calibrated using our laboratory monitoring gas (N_2), which had previously been calibrated against the international standard NSVEC (N_2), supplied by the IAEA.

Correction Procedure for Isotope Analysis. Analogous to the correction procedure described by Melsbach et al.,²⁷ all samples and standards were measured in triplicate, and their isotope ratios are reported as the arithmetic means with their respective estimated standard deviations ($\pm\sigma$). In addition to the calibration of the measurement gas, samples are bracketed within the sequences by in-house standards of DPC and MDPC, whose isotopic signature had been determined with EA-IRMS (Table S4). Here, the principle of identical treatment by Werner and Brand⁴¹ was applied to correct for trueness by identifying drifts and offsets, caused by different combustion efficiencies. ^{15}N correction was performed using MDPC synthesized by LGC Standards GmbH, while an authentic DPC standard was used for ^{13}C correction of the LC-IRMS method.

Concentration Measurement of CLZ and DPC from Soil Samples. CLZ and DPC residues were measured within the first soil layers (0–10 cm) approximately 1 year after herbicide/metabolite application. To obtain a representative and homogenous sample, subsamples for soil analysis were collected in quadruplets and combined afterward. The total amount was at least 100 g soil per sample. Sample extraction and analysis were carried out by Eurofins Sofia GmbH using LC–tandem mass spectrometry (MS/MS).

Statistical Analyses. Pearson correlation analysis and one-way analyses of variance (ANOVA) tests were performed to identify patterns and to measure the statistical significance of the relationship between variables. ANOVA tests were performed to assess the differences between soil types and pesticide application methods regarding the total accumulated drainage, total DPC mass leached, and maximum change of carbon and nitrogen isotope signatures 900 days after pesticide application/injection. Separate Pearson linear correlations

were performed to evaluate the relationship between irrigation and drainage, between soil humidity and drainage, between drainage and DPC mass leached, and between evapotranspiration and DPC mass leached. All tests were performed using the statistical package Minitab 13.31 (Minitab Inc., State College, PA). All statistical differences were set to the $\alpha = 0.05$ significance level ($p \leq 0.05$).

RESULTS AND DISCUSSION

Water Dynamics. Total accumulated drainage 900 days after CLZ or DPC application/injection was between 488 and 656 mm for gravel soil and between 337 and 502 mm for moraine soil. In relation to the water input, drainage represented 25–39% and 18–27% of the total irrigation, respectively. Increased drainage coincided with periods of high irrigation intensity and high soil water content. A significant positive correlation (Pearson's correlation coefficient, r , from 0.30 to 0.49, $p < 0.0001$) between the intensity of daily irrigation and daily drainage was observed for the six lysimeters. As detailed by Torrentó et al.,³⁷ who used the same lysimeters to assess the fate of the herbicide atrazine and its metabolites, soil humidity data revealed that large irrigation events resulted in a greater contribution of preferential flow to drainage and that this effect was more significant for the moraine than for the gravel soil. A statistically significant ($p < 0.05$) correlation was observed between soil humidity and drainage for both gravel and moraine soils at all depths where capacitance sensors were installed (at 16, 36, 56, 76, and 96 cm for moraine soil and at 11, 51, and 71 cm for gravel soil).³⁷ This correlation was stronger for moraine (r between 0.15 and 0.22, except for one depth with $r = 0.08$) than for gravel soil (r between 0.06 and 0.16) and is in accordance with the fact that fluctuations in the soil water content were smaller for the latter, especially at greater depths.³⁷ The total accumulated drainage after 900 days was influenced by the application method (higher drainage for depth injection, $p = 0.331$) and by the soil type (higher for gravel soil, $p = 0.426$). Large amounts of drainage from the gravel soil are probably a consequence of the higher water permeability and low water content at field capacity of this soil.³⁷

The average monthly and annual irrigation, drainage, and evapotranspiration values for the lysimeters used in this study are shown in Table S5. Annual evapotranspiration, estimated by the water balance computation as explained by Torrentó et al.,³⁷ was for the 4 years of study (2014–2017) higher for moraine (315–633 mm) than for gravel soil (266–585 mm), although the effect was not statistically significant ($p = 0.718$). A significant effect ($p = 0.002$) on annual evapotranspiration was, however, observed for crop type: evapotranspiration was higher for sugar beet and corn than for broccoli, Chinese cabbage, lettuce, and leek. The effects of soil type and pesticide application method on evapotranspiration 900 days after pesticide application were not statistically significant ($p = 0.093$ and 0.579, respectively). The influence of the cover vegetation on drainage and pesticide fate was not assessed, since no significant differences in the plant development were observed between lysimeters. For details, see Section III.2, Supporting Information.

Trends in Compound Concentrations after DPC Surface Application. Neither CLZ nor DPC had ever been applied to any of the lysimeters prior to that study so that trends for CLZ and DPC concentrations could be uniquely attributed to our experimental design. Through application of

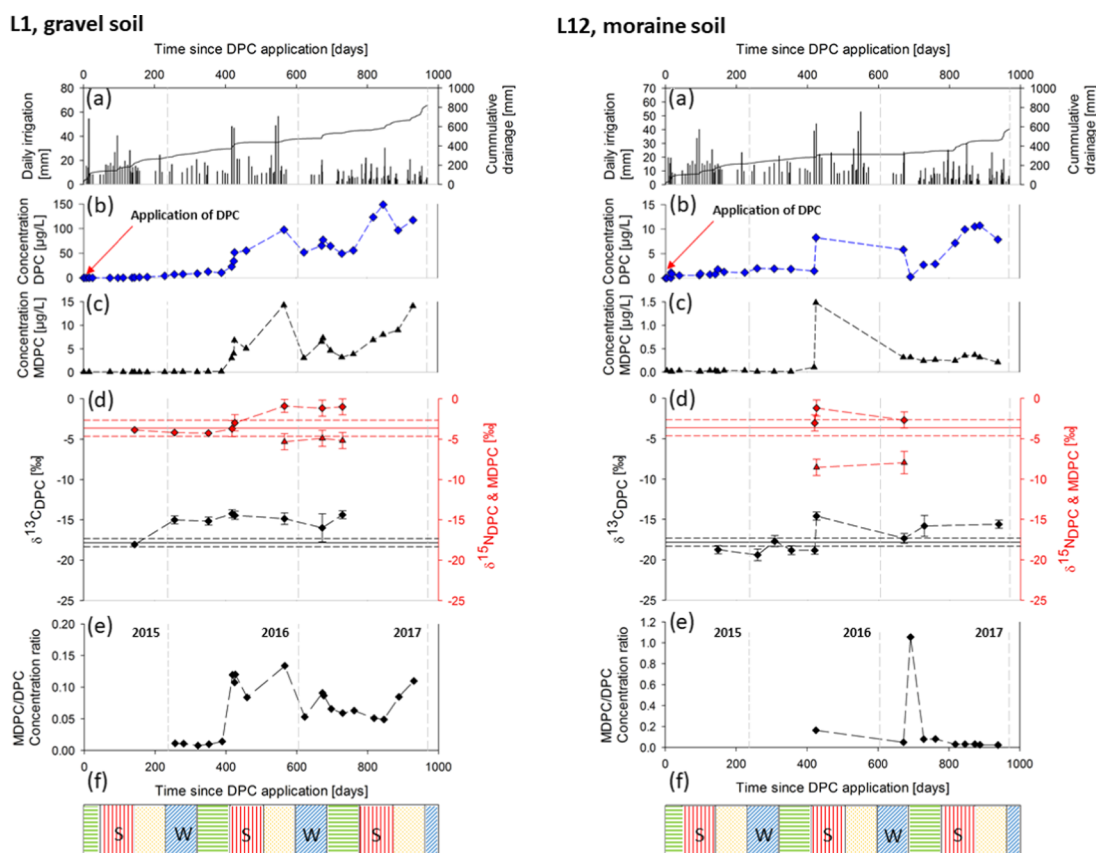


Figure 1. Lysimeters with DPC application on the surface (a single application in May 2015): L1 in gravel soil (left panels) and L12 in moraine soil (right panels). (a) Daily irrigation (black bars) and cumulative drainage (gray line). (b, c) Concentrations of DPC (blue diamonds) and MDPC (black triangles); note that different scales are used for both soil types. (d) Carbon (black diamonds) and nitrogen (red diamonds) isotope ratios of DPC and nitrogen isotope values of MDPC (red triangles); error bars show the associated uncertainties ($\pm 0.5\%$ for carbon, $\pm 1.0\%$ for nitrogen isotope analysis), or when exceeding this uncertainty, standard deviations of triplicate measurements are given. EA isotope values of the applied DPC are shown as lines, whereas associated uncertainties ($\pm 0.5\%$ for carbon, $\pm 1.0\%$ for nitrogen isotope analysis) are shown as dashed lines in the corresponding color. (e) Metabolite-to-parent-compound molar ratio of MDPC/DPC (black diamonds). (f) Season corresponding to the time since application: spring (green horizontal lines), summer (red vertical lines), autumn (yellow dots), and winter (blue diagonal lines); the dashed gray lines repeated in each subfigure represent the start of a new year.

the metabolite DPC to the surface of the lysimeters, it was possible to investigate the fate of DPC separately, in the absence of CLZ and without the interference of constantly formed DPC. The breakthrough of DPC in the seepage water differed between the soil types (Figure 1b). In the lysimeter with moraine soil (L12), concentrations changed more rapidly in relation to drainage events than for gravel soil (L1). For gravel soil (L1), DPC was detected in the drainage water for the first time after 137 days, while it broke through only 15 days after application in moraine soil (L12). In these lysimeters, a positive correlation was observed between drainage and DPC mass leached, which was more significant for gravel ($r = 0.36$, $p = 0.029$) than for moraine soil ($r = 0.31$, $p = 0.113$). The observed dependency of the drainage response, and the analytes' concentration therein, on the irrigation agrees with Torrentó et al.³⁷ for the fate of the herbicide atrazine and its metabolites in these lysimeters. Table S6 summarizes the observed breakthrough parameters for each lysimeter. Two main DPC concentration peaks were detected in the drainage water of these two lysimeters after approximately 550 and 850 days (Figure 1e). They coincided with two intense irrigation events (November 2016 and September 2017, Table S2). In moraine soil (L12, 303 and 441 mm), less accumulated drainage had occurred at the peak

concentration of DPC than in the gravel soil (L1, 458 and 852 mm). Concentrations in the gravel soil were approximately 1 order of magnitude higher than in moraine soil. In contrast to our previous study,³⁷ no rapid breakthrough peak was observed shortly after application, neither for DPC nor for uranine (Figure S4). Bromide mass recovery curves (Figure S5) showed an asymmetric sigmoidal shape, which is characteristic for transport through a porous matrix with some retardation. Smoother trends for DPC compared to the tracers indicate retardation by sorption and/or attenuation by degradation. DPC leaching was therefore mainly driven by porous matrix flow, although intense irrigation events resulted in a greater contribution of preferential flow. This was observed mainly in moraine soil. For example, after 425 and 670 days, sharp increases in DPC concentrations were measured (Figure S4). This might be a consequence of transport by preferential flow induced by intense irrigation events (July 2016 and March 2018, respectively, Table S2).

The transformation product of DPC, MDPC, was first detected after 256 and 425 days for gravel and moraine soil, respectively. At the end of the monitoring period (950 days after DPC application), 6.0% of the DPC mass was recovered in the drainage water of the gravel soil and only 0.3% in the moraine soil (details about the calculation of analyte recovery

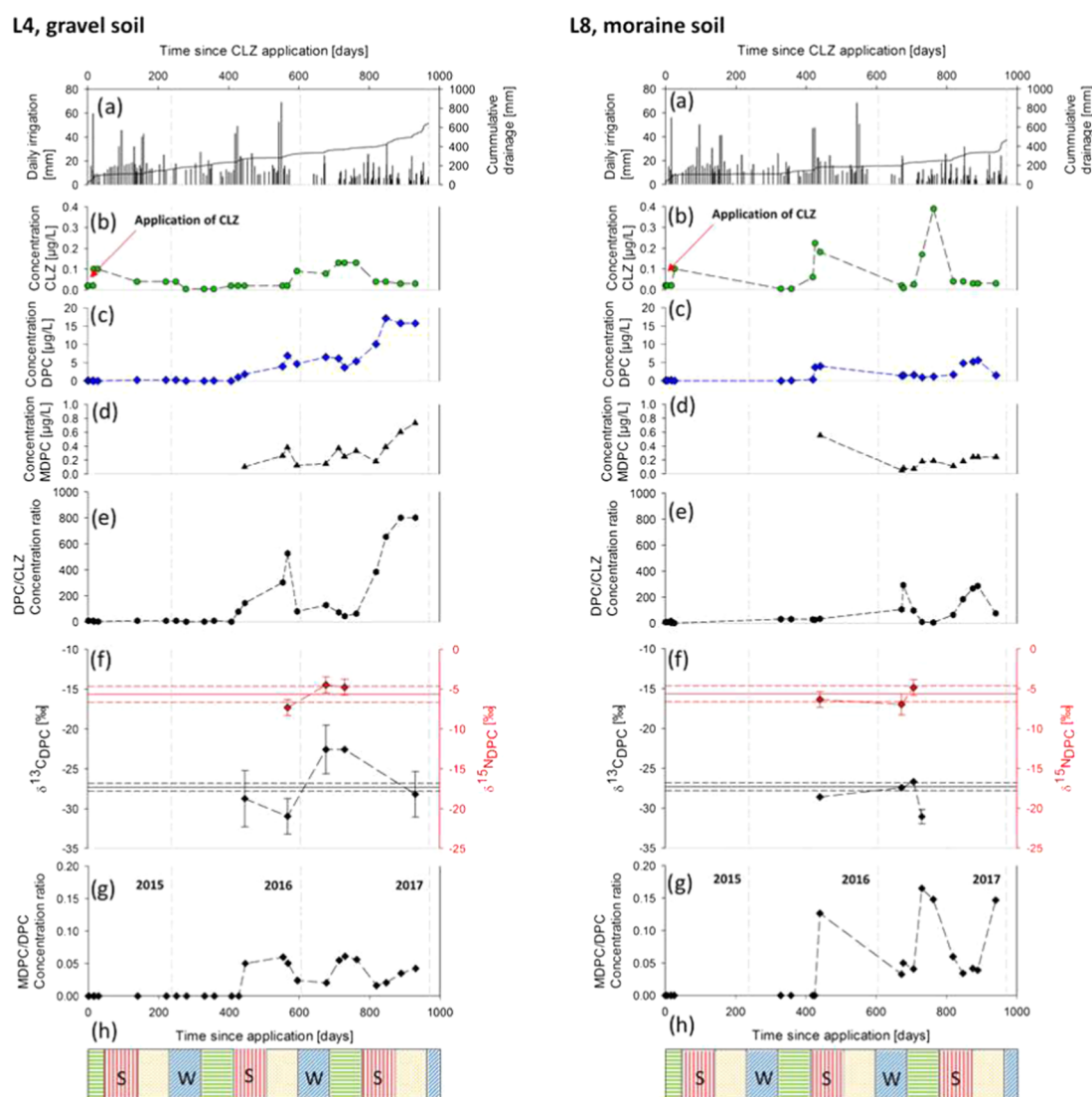


Figure 2. Lysimeters with CLZ application on the surface (a single application in May 2015): L4 (left panels) and L8 (right panels). (a) Daily irrigation (black bars) and cumulative drainage (gray line). (b–d) Concentrations of CLZ (green circles), DPC (blue diamonds), and MDPC (black triangles) over time. (e) Metabolite-to-parent-compound molar ratio of DPC/CLZ (black hexagon). (f) Carbon (black diamonds) and nitrogen (red diamonds) isotope ratios of DPC. Error bars show the associated uncertainties ($\pm 0.5\%$ for carbon, $\pm 1.0\%$ for nitrogen isotope analysis), or when exceeding this uncertainty, standard deviations of triplicate measurements are given. EA isotope values of the applied CLZ are shown as lines, whereas associated uncertainties ($\pm 0.5\%$ for carbon, $\pm 1.0\%$ for nitrogen isotope analysis) are shown as dashed lines in the corresponding color. (g) Metabolite-to-parent-compound molar ratio of MDPC/DPC (black diamonds). (h) Season corresponding to the time since application: spring (green vertical lines), summer (red vertical lines), autumn (yellow dots), and winter (blue diagonal lines); the gray dashed lines repeated in each subfigure represent the start of a new year.

can be found in Section II.9, Supporting Information). MDPC accounted for 0.55 and 0.06% of the applied DPC, respectively. One year after application, DPC residues of approximately 3 and 7% of the applied DPC were quantified within the first soil layers (0–10 cm) of gravel and moraine soil, respectively (Table S7). Thus, an incomplete mass balance was observed. Here, possible explanations might be (i) sorption of DPC to lower soil layers within the root zone, where further sampling was not possible without disturbing the lysimeter, (ii) the uptake and metabolism of DPC by plants,^{42,43} and (iii) the presence of DPC–fulvic acid complexes, as their functional groups can bind DPC. This has been demonstrated by Gatzweiler,⁴⁴ who conducted lysimeter experiments with ¹⁴C-labeled CLZ. Using thin-layer chromatography and analyzing the radioactivity, Gatzweiler⁴⁴ detected DPC in fulvic acid

fractions, verifying the existence of these DPC–fulvic acid complexes. Nevertheless, the MDPC/DPC concentration ratio suggests that further DPC degradation to MDPC occurred in both soils, mainly after 425 days. (As both DPC and MDPC have a similar GUS leaching potential and show only minor differences in their mobility, no major retardation effect on the transport of either compound is expected, so the use of metabolite-to-parent-compound ratios appears justified in this case.)⁹ This further degradation agrees with the findings of Schuhmann et al.⁴² and the environmental degradation pathway predicted by Roberts et al.¹⁹ This demonstrates that transformation of DPC is occurring only slowly. For the moraine soil, a local maximum for the MDPC/DPC concentration ratio was reached after 750 days (Figure 1, L12e). To obtain additional insight into DPC transformation,

we, therefore, evaluated the results from CSIA of the lysimeter experiment.

Insights into DPC Transformation by Isotope Analysis of DPC from Surface Application. Initially, the $\delta^{13}\text{C}$ and $\delta^{15}\text{N}$ values of the leached DPC were close to the original isotope signature of the applied DPC (Figure 1, L1d and L12d). Over the course of the observation period, carbon isotope signatures of DPC showed significant enrichment in ^{13}C ($\Delta\delta^{13}\text{C}_{\text{DPC}}$) of approximately +4‰ in both soil types. The heavy irrigation event 672 days after DPC surface application (March 2017, Table S2) caused a new small DPC breakthrough peak, in which DPC isotope values returned to the original isotopic composition, most likely because new DPC was mobilized, which had not yet been subject to transformation. This effect was more significant in moraine soil, where a greater contribution of preferential flow in response to this heavy irrigation event was observed, resulting in a recovery of up to 20% of the total mass of DPC leached in the drainage water after the monitoring period. Additionally, significant changes of nitrogen isotope signatures ($\Delta\delta^{15}\text{N}_{\text{DPC}}$) of +2 to +3‰ were observed, however, mainly in the gravel soil (L1). Furthermore, these shifts were observed at a later time point than the enrichment in ^{13}C , approximately 450 days after application. The fact that during the first 450 days DPC was only becoming enriched in ^{13}C , and then in both ^{13}C and ^{15}N , suggests that DPC was transformed by two distinct processes and that only the latter one starting after 450 days involved a reaction of a nitrogen atom. The transition between the two trends coincides with an increase in the MDPC/DPC concentration ratio (Figure 1, L1e). As there had never been any application of CLZ or DPC to these lysimeters, the carbon and nitrogen isotope values of DPC can be uniquely attributed to the substance applied in this study and changes in these isotope signatures are attributable to its further degradation. Interestingly, due to the high concentrations of MDPC in the drainage water, it was possible to measure the $\delta^{15}\text{N}$ of formed MDPC after purification by preparative HPLC (Tables S9 and S10). In both lysimeters, the $\delta^{15}\text{N}$ of MDPC was significantly more negative (approximately by 4‰) compared to the $\delta^{15}\text{N}$ value of the DPC at that time (Figure 1d). Since DPC contains three nitrogen atoms out of which only one is methylated, it can be estimated that the methylation of DPC causes a nitrogen isotope fractionation of approximately $3 \times 4\text{‰} = +12\text{‰}$ at the reactive atom. Our data for the DPC surface application show an enrichment in ^{13}C and, to a lesser extent, in ^{15}N for DPC in both soils, which was significantly masked in the moraine soil due to the leaching of fresh DPC after heavy irrigation events. Transformation extent can thus be underestimated. Here, transformation of DPC may be easier to detect using the metabolite-to-parent concentration ratio, at least for the pathway involving MDPC formation. On the other hand, using the metabolite-to-parent concentration ratio only to investigate the transformation of DPC, the evidence of an additional transformation mechanism would have remained undetected. Additionally, CSIA appears to be more robust as the integrated isotope signal, which indicates that degradation remains measurable, even if the metabolite might be subject to sorption or further transformation.

CLZ Surface Application Mimicking a Realistic Field Scenario. For the surface application of CLZ (Figure 2, L4 and L8), the metabolites DPC and MDPC were detected in the seepage water 425 days after CLZ application, coinciding with a heavy irrigation event (July 2016, Table S2), while the

applied parent compound remained below or close to the limit of detection of $0.05 \mu\text{g/L}$ during the time of monitoring (970 days). Analyte breakthrough curves and concentrations differed between the soil types. For uranine, a rapid breakthrough shortly after application was detected in moraine soil (Figure S4). During the monitoring period, the maximum uranine concentration was measured within the first day, after only 4 mm of accumulated drainage (Table S6), suggesting that it was mainly transported through preferential flow, bypassing large fractions of the soil matrix. Furthermore, a pronounced uranine peak tailing was observed, which is typical of preferential flow (Figure S4). Furthermore, the DPC mass recovery curves were significantly different for the two soils (Figure S5), giving further evidence of a greater contribution of transport through preferential flow for moraine soil. This difference in soil type agrees with the results of the lysimeters with surface application of DPC as well as with the findings for other compounds described in Torrentó et al.³⁷

Approximately 0.5 and 0.13% of the applied CLZ were leached as DPC after 950 days in gravel and moraine soil, respectively. When analyzing the CLZ and DPC content in the upper soil, for none of the lysimeters a closed mass balance was obtained. While no CLZ was detected in the first soil layer (0–10 cm) approximately 1 year after CLZ application to the lysimeter surface (consistent with Pestemer and Malkomes⁴⁵), DPC amounts corresponding to 5–9% of the applied CLZ were found (Table S7). CLZ and DPC are expected to be incorporated into maize plants based on the findings of Schuhmann et al.⁴² and Stephenson and Ries.⁴³ In addition, Barra et al.⁴⁶ showed that during the first 90 days after CLZ application, CLZ dissipation was mainly due to volatilization and degradation, whereas, later on, when CLZ was already in the subsurface, its disappearance from soil occurred mainly due to degradation. Higher DPC/CLZ concentration values were measured in the drainage water of the gravel soil compared to moraine soil. These results suggest that either DPC leached more rapidly through the soil matrix in the gravel soil because of higher permeability or, alternatively, the extent of CLZ degradation was higher for the gravel soil compared to that for moraine soil, as there is a greater contribution of preferential flow in moraine soil, which bypasses the top layer where degradation is mostly expected to take place. When preferential flow occurs, pesticides bypass large fractions of the soil matrix, reducing the degradation and sorption potential, as the topsoil is microbiologically more active and with higher organic matter content. CSIA results provide additional insights about these two hypotheses (see below). Concentration ratios and isotope results point to a higher extent of CLZ degradation in gravel than in moraine soil. Nevertheless, some metabolite-to-parent ratio values may be underestimated because CLZ was below the limit of detection and, therefore, CLZ concentrations corresponding to the detection limit were chosen for calculation, resulting in a minimum estimated ratio in that case.

In lysimeters with CLZ surface application (Figure 2, L4f and L8f), some carbon isotope values of DPC show a shift to more negative $\delta^{13}\text{C}$ values compared to the carbon isotope signature of the applied CLZ (Table S4). This behavior is observable in both lysimeters, especially after heavy rain events such as that one performed 550 days after CLZ application (November 2016, Table S2), which resulted in a depletion in ^{13}C by 3.4‰ for gravel soil (L4). This shift may be attributed to the mobilization of freshly formed DPC, which is formed from CLZ by the loss of the aromatic moiety through C–N

bond cleavage. Presuming that the phenyl ring contains more ^{13}C atoms than the average molecule (Figure S1), which may have been introduced by the synthesis process, this would result in a ^{13}C -depletion. Alternatively, the shift may be due to secondary normal carbon isotope effects. Once transformation of DPC starts, as evidenced by the detection of MDPC, this ^{13}C -depletion may be masked compared to the carbon isotope composition of the applied CLZ, as an enrichment in ^{13}C in DPC is expected. Consistently, observed $\delta^{13}\text{C}_{\text{DPC}}$ values are close to or higher than the EA-IRMS value of the applied CLZ.

In moraine soil (L8), no evidence of DPC degradation was obtained based on carbon isotope values, as changes of $\delta^{13}\text{C}$ values were within the uncertainty of the method (Figure 2, L8f). In contrast, carbon isotope values of DPC in gravel soil (L4) showed an enrichment in ^{13}C by up to +8.4‰ (Figure 2, L4f), indicating that DPC was further transformed. At a subsequent time point (930 days after application), however, the $\delta^{13}\text{C}_{\text{DPC}}$ value changed back close to the original isotopic signature detected at the beginning of monitoring. This indicates that the change in $\delta^{13}\text{C}$ DPC values was “diluted” by the input of newly mobilized DPC, as supported by a concomitant increase of the DPC/CLZ concentration ratio (Figure 2, L4e). Hence, the two lines of evidence (isotope and DPC/CLZ concentration ratios) were found to complement each other in the assessment of DPC degradation; when one line of evidence was about to fail, the other was able to provide conclusive evidence.

The more substantial changes in both $\delta^{13}\text{C}_{\text{DPC}}$ values and DPC/CLZ concentration ratios indicate that DPC degradation was higher in L4 (gravel soil) than in L8 (moraine soil), leading to the hypothesis that differences in the transformation rate of CLZ to DPC existed. This is supported by the findings of Capri et al.,⁴⁷ who reported that the extent of CLZ degradation is influenced by the moisture content of the soil. As described by Torrentó et al.,³⁷ there is a higher soil water content and less fluctuation of the water content in the gravel soil than in moraine soil. On the other hand, for both moraine and gravel soil, $\delta^{15}\text{N}$ values of the DPC formed are, as hypothesized in Figure S1, close to the nitrogen isotope signature of the applied CLZ. Based on the findings of Lingens et al.,²⁰ the pyridazinone ring of the CLZ molecule is not involved in the first transformation steps (dioxxygenation of the phenyl ring, Figure S1), so no significant nitrogen isotope fractionation is expected during CLZ transformation to DPC.^{27,29,48,49} As the isotope effect during multistep reactions is reflected by the rate-limiting steps, our results indicate that the amidase-driven cleavage of the moiety (2-hydroxymuconate) at the C–N bond may be not rate-limiting. As a result, changes in nitrogen isotope values of DPC can be uniquely attributed to its further degradation.

Transformation Potential after Herbicide Injection below the Root Zone. Finally, two lysimeters (L6 and L7) were chosen to simulate the preferential flow after a heavy irrigation event by injecting CLZ into a depth of 40 cm, following the approach described by Torrentó et al.³⁷ In contrast to surface application observations, CLZ and DPC broke through a few days after CLZ was injected (Figure S6). The second metabolite MDPC was detected in the drainage water after 130 days. The detection of the metabolites indicates that CLZ degradation occurred, even when it was injected below the root zone. Additionally, significantly greater concentrations of CLZ, DPC, and MDPC (1–2 orders of magnitude higher) were measured in the drainage water of the

lysimeter with CLZ depth injection compared to the CLZ surface applications. In contrast to surface application observations, an early breakthrough of injected uranine and CLZ occurred for the two soil types within a few days (<11 days for gravel and 6 h for moraine soil) and after a small amount of accumulated drainage (<55 and 8 mm, respectively). This rapid response and the peak tailing for both solutes are typical of preferential flow. More than 80% of the total uranine recovered mass was received during this early breakthrough. These results confirm that preferential flow was enhanced by depth injection. In agreement with Torrentó et al.,³⁷ the response to intense irrigation events was more significant than for surface applications. It results in several fluctuations of CLZ and DPC concentrations in the drainage water during the first 370 days for both soils (Figure S4). A great increase in CLZ and DPC concentrations occurred in both lysimeters after 330–345 days (at 225–320 mm of accumulated drainage), coinciding with the heavy irrigation events in May 2015 (Table S2). After this pulse, no CLZ was recovered, while a steady increment in accumulated mass recovery was observed for DPC for both soils (Figure S5).

At the end of the monitoring period (1250 days after CLZ injection), total leached analytes accounted for 24 and 22% of the injected CLZ mass, respectively. Even though comparison between the two application methods may be limited (11 uniformly distributed CLZ injections versus broad surface application), higher recoveries were obtained for CLZ injection after the same time of monitoring (950 days): from 2.0 to 3.4% of CLZ, between 16.4 and 17.2% of DPC, and from 0.2 to 0.4% of MDPC compared to no CLZ leaching, 0.13–0.15% of DPC, and below 0.02% of MDPC with surface application. As the mass balance remains incomplete for CLZ injection, there is evidence that additional processes occurred. With surface application, processes such as volatilization,⁴⁶ additional transformation pathways,¹⁹ and uptake by plants⁴² likely accounted for the mass losses. Additional influences on the low recovery, which might also occur after CLZ depth injection, might be the low mobility for CLZ⁵⁰ and the formation of putative fulvic acid complexes of DPC.⁴⁴ The DPC/CLZ concentration ratio in these lysimeters with CLZ depth injection shows that the main fraction of DPC seems not to be involved in sorption as this concentration ratio has a single global maximum starting approximately 600 days after CLZ injection (Figure S6). This global concentration maximum is 2 orders of magnitude greater than DPC/CLZ concentration ratios observed for CLZ surface application. It shows the importance of the topsoil to retain DPC. As indicated by the MDPC/DPC concentration ratio, further transformation of DPC occurred, although its extent and nature are unknown.

ANOVA tests were performed to assess the differences between the two soil types and the CLZ application method (i.e., surface application vs depth injection) regarding DPC leaching and its carbon and nitrogen isotope fractionation. The results showed that the DPC mass leached after 900 days was significantly influenced by the CLZ application method ($p < 0.0001$). A 90- to 260-fold increase in DPC leaching was observed for depth injection compared to surface application. Although the effect of soil type was not statistically significant ($p = 0.998$), CLZ surface application resulted in higher DPC mass leached for gravel than for moraine soil.

Similar to observations in lysimeters with CLZ surface application, carbon isotope data of DPC show an enrichment

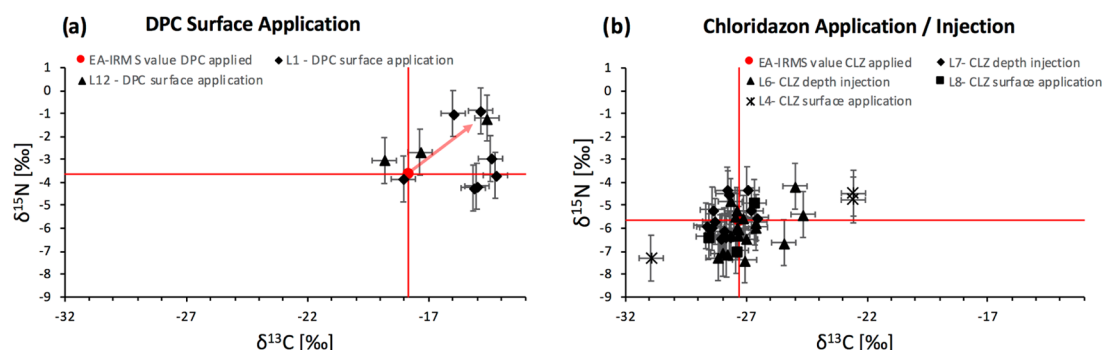


Figure 3. Dual-element isotope plot of (a) DPC degradation in lysimeters L1 and L12, where DPC was applied on the surface and (b) formation and degradation of DPC in the lysimeters where CLZ was either applied (L4 and L8) or injected in a depth of 40 cm (L6 and L7). The red circles represent the isotopic signature of the applied/injected (a) DPC and (b) CLZ; the positions of CLZ and DPC differ within the dual-element isotope plots due to their different isotopic source signatures (Table S4).

in ^{13}C of 3.8‰ after 648 days of herbicide injection below the root zone in the gravel soil, while no significant change is observed in moraine soil (Figure S6). There, up to 648 days, no significant changes in $^{13}\text{C}/^{12}\text{C}$ and $^{15}\text{N}/^{14}\text{N}$ ratios were measured. The $\delta^{15}\text{N}$ value of DPC shows the initial isotope composition of the CLZ applied to the lysimeter. In very few cases, it was possible to measure $\delta^{15}\text{N}$ values of MDPC formed from DPC (Figure S6 and Table S11). Nitrogen isotope values of MDPC were approximately 6‰ more negative than $\delta^{15}\text{N}$ signature of its parent compound DPC. This shift agrees with the findings in DPC transformation experiments (Figure 1, L1 and L12) and, thus, supports the nitrogen isotope fractionation of DPC methylation of approximately +12‰ as estimated above (Tables S9 and S10). According to the ANOVA results, isotope fractionation was mainly influenced by the soil type (higher ^{13}C and ^{15}N enrichment for gravel soil) rather than by the CLZ application method.

Dual-Element Isotope Plot to Identify DPC Formation and Transformation. A dual-element plot was used for an overview of observed trends in carbon and nitrogen isotope values of DPC (i) either from formation from CLZ or (ii) when DPC was further transformed. In Figure 3a, isotope data of all lysimeters with DPC surface application are combined, whereas in Figure 3b, data of all lysimeters with CLZ application/injection are shown. In Figure 3a, where DPC represents the original applied compound, a general trend toward more positive $\delta^{15}\text{N}$ and $\delta^{13}\text{C}$ values is observable. This observation is consistent with the well-established phenomenon that, in most cases, heavy isotopes become enriched in the remaining substrate during (bio)degradation. As detailed above, DPC in first drainage samples (first 450 days) of the gravel soil showed a significant enrichment in ^{13}C but not in ^{15}N , indicating that two distinct processes for DPC transformation occurred. In contrast, Figure 3b shows two opposing trends pointing to the occurrence of both DPC formation and transformation. On the one hand, similar to the lysimeters with DPC application, a trend is observed towards more positive $\delta^{13}\text{C}$ and $\delta^{15}\text{N}$ values during the transformation of DPC. On the other hand, numerous data points show more negative $\delta^{13}\text{C}$ and $\delta^{15}\text{N}$ isotope values. As this trend is observable only for lysimeters with CLZ application and injection, we attribute it to the formation of DPC. As discussed above, possible explanations for the observed depletion in ^{13}C (more negative $\delta^{13}\text{C}$ values) are (i) an artifact of an uneven ^{13}C isotope distribution in the cleaved phenyl ring during DPC formation and (ii) that the formation of DPC from CLZ (Figure S1) may

be accompanied by a small and normal secondary carbon isotope effect.

Environmental Significance and Outlook. The isotope fractionation in DPC observed for the three tested scenarios is particularly important because (i) the change in the carbon and nitrogen isotopic signatures of DPC evidenced transformation of an apparently persistent metabolite and (ii) these changes provide evidence that likely more than one transformation pathway is involved in DPC transformation. In soil, only methylation of DPC to MDPC is known and thus our data suggest the need for further laboratory experiments and mechanistic studies on DPC (bio)degradation to gain further insight into possible additional transformation pathways. (iii) Formed DPC, which had not been subjected to further transformation yet, showed the same nitrogen isotope signature as its precursor CLZ. Hence, $\delta^{15}\text{N}$ values may serve as isotopic fingerprints to identify the origin of such compounds in groundwater.

When applying CSIA, the combination with conventional methods was found to be complementary and advantageous, especially when the formation and transformation of the metabolite were occurring simultaneously. Once the introduction of the newly formed metabolite dominated, evidence from CSIA was not necessarily conclusive because transformation-related changes in isotope ratios were masked by the continuous input of DPC. Here, additional information was gained by metabolite-to-parent concentration ratios, which became the greatest and could provide evidence of DPC formation. Vice versa, when metabolite-to-parent ratios were small because DPC was further transformed, it was the changes in the isotope ratios of DPC that still carried the isotopic imprint of the reaction and, hence, made transformation visible. For further understanding of the environmental fate of DPC, reference experiments focusing on the determination of stable isotope fractionation factors as well as microbial processes during DPC transformation are required in order to identify transformation mechanisms and quantify them.

For the future, our approach with CSIA in combination with concentration measurements and systematic long-term lysimeter experiments holds promise to answer questions about transformation pathways and the extent of soil/vadose zone (bio)transformation not only for DPC, one of the most widely detected substances, in groundwater but also for other micropollutants of concern and their metabolites. Additionally, this study confirmed that the application of CSIA in combination with solid-phase extraction^{27,39} is feasible for

the analysis of polar micropollutants in drainage water at environmentally relevant concentrations. Thus, it can also be applied to studies in agricultural soil and groundwater from common unconsolidated sand and/or gravel aquifers with catchment areas with agricultural production.

■ ASSOCIATED CONTENT

Supporting Information

The Supporting Information is available free of charge at <https://pubs.acs.org/doi/10.1021/acs.est.9b04606>.

Further details on chemicals, lysimeters, analytical methods, and analyte recovery calculations. Results of water balance computation, vegetation cover evolution, breakthrough trends, EA-IRMS analyses, soil analyses, CLZ depth injection, and nitrogen isotope ratios (PDF)

■ AUTHOR INFORMATION

Corresponding Author

Martin Elsner – Institute of Groundwater Ecology, Helmholtz Zentrum München, 85764 Neuherberg, Germany; Chair of Analytical Chemistry and Water Chemistry, Technical University of Munich, 81377 Munich, Germany; orcid.org/0000-0003-4746-9052; Phone: +49 89 2180 78232; Email: m.elsner@tum.de; Fax: +49 89 2180 78255

Authors

Aileen Melsbach – Institute of Groundwater Ecology, Helmholtz Zentrum München, 85764 Neuherberg, Germany

Clara Torrentó – Centre for Hydrogeology and Geothermics (CHYN), University of Neuchâtel, 2000 Neuchâtel, Switzerland; orcid.org/0000-0003-1480-2744

Violaine Ponsin – Centre for Hydrogeology and Geothermics (CHYN), University of Neuchâtel, 2000 Neuchâtel, Switzerland; orcid.org/0000-0002-6909-678X

Jakov Bolotin – Eawag, Swiss Federal Institute of Aquatic Science and Technology, 8600 Dübendorf, Switzerland

Laurence Lachat – Neuchâtel Platform of Analytical Chemistry (NPAC), University of Neuchâtel, 2000 Neuchâtel, Switzerland

Volker Prasuhn – Research Division, Agroecology and Environment, Agroscope, 8046 Zürich, Switzerland

Thomas B. Hofstetter – Eawag, Swiss Federal Institute of Aquatic Science and Technology, 8600 Dübendorf, Switzerland; Institute of Biogeochemistry and Pollutant Dynamics, ETH Zürich, CH-8092 Zürich, Switzerland; orcid.org/0000-0003-1906-367X

Daniel Hunkeler – Centre for Hydrogeology and Geothermics (CHYN), University of Neuchâtel, 2000 Neuchâtel, Switzerland

Complete contact information is available at: <https://pubs.acs.org/doi/10.1021/acs.est.9b04606>

Author Contributions

[○]A.M. and C.T. contributed equally as the first authors to this work.

Notes

The authors declare no competing financial interest.

■ ACKNOWLEDGMENTS

This study was supported by the project CRSII2_141805/1 from the Swiss National Science Foundation (SNSF) and by the CRC 1253 “CAMPOS” of the German National Science Foundation. The authors would like to thank the NPAC

(UNiNE) for help in the laboratory as well as Doris Ebert from BASF for providing the chemical DPC.

■ ABBREVIATIONS

CLZ 5-amino-4-chloro-2-phenyl-2H-pyridazin-3-one
DPC 5-amino-4-chloro-3(2H)-pyridazinone
MDPC 5-amino-4-chloro-2-methyl-3(2H)-pyridazinone

■ REFERENCES

- (1) European Commission. *Groundwater Protection in Europe the new Groundwater Directive: Consolidating the EU Regulatory Framework*; European Commission-Directorate-General for Environment, EU Publications: Brussels, 2008.
- (2) Bundesamt für Umwelt BAFU. *Pflanzenschutzmittel (PSM)-Wirkstoffe und -Metaboliten im Grundwasser*; Nationale Grundwasserbeobachtung NAQUA, 2013.
- (3) Loos, R.; Gawlik, B. M.; Locoro, G.; Rimaviciute, E.; Contini, S.; Bidoglio, G. EU-wide survey of polar organic persistent pollutants in European river waters. *Environ. Pollut.* **2009**, *157*, 561–568.
- (4) Reemtsma, T.; Alder, L.; Banasiak, U. A multimethod for the determination of 150 pesticide metabolites in surface water and groundwater using direct injection liquid chromatography–mass spectrometry. *J. Chromatogr. A* **2013**, *1271*, 95–104.
- (5) Postigo, C.; Barceló, D. Synthetic organic compounds and their transformation products in groundwater: Occurrence, fate and mitigation. *Sci. Total Environ.* **2015**, *503–504*, 32–47.
- (6) Fenner, K.; Canonica, S.; Wackett, L. P.; Elsner, M. Evaluating Pesticide Degradation in the Environment: Blind Spots and Emerging Opportunities. *Science* **2013**, *341*, 752–758.
- (7) Thier, H.-P.; Zeumer, H. *Manual of Pesticide Residue Analysis*; VCH Verlagsgesellschaft, 1987; Vol. I, p 443.
- (8) Drescher, N.; Otto, S. Über den Abbau von 1-Phenyl-4-amino-5-chlor-pyridazon-6 (Pyrazon) im Boden. *Pflanzenkrankh. (Pflanzenpathol.) Pflanzenschutz* **1969**, *76*, 27–33.
- (9) University of Hertfordshire. *PPDB: Pesticide Properties DataBase*; University of Hertfordshire, 2018. <http://sitem.herts.ac.uk/aeru/ppdb/en/Reports/141.htm>.
- (10) Buttiglieri, G.; Peschka, M.; Frömel, T.; Müller, J.; Malpei, F.; Seel, P.; Knepper, T. P. Environmental occurrence and degradation of the herbicide n-chloridazon. *Water Res.* **2009**, *43*, 2865–2873.
- (11) Loos, R.; Locoro, G.; Comero, S.; Contini, S.; Schwesig, D.; Werres, F.; Balsaa, P.; Gans, O.; Weiss, S.; Blaha, L.; Bolchi, M.; Gawlik, B. M. Pan-European survey on the occurrence of selected polar organic persistent pollutants in ground water. *Water Res.* **2010**, *44*, 4115–4126.
- (12) Weber, W. H.; Seitz, W.; Schulz, W.; Wagener, H.-A. Nachweis der Metaboliten Desphenyl-chloridazon und Methyl-desphenyl-chloridazon in Oberflächen, Grund- und Trinkwasser. *Vom Wasser* **2007**, *105*, 7–14.
- (13) Reinhardt, M.; Kozel, R.; Hofacker, A.; Leu, C. Monitoring von PSM-Rückständen im Grundwasser. *Aqua Gas* **2017**, *6*, 78–89.
- (14) Sturm, S.; Kiefer, J.; Kollotzek, D.; Rogg, J.-m. Aktuelle Befunde der Metaboliten von Tolyfluamid und Chloridazon in den zur Trinkwasserversorgung genutzten Grundwasservorkommen Baden-Württembergs. *gwf Wasser/Abwasser*; DIV Deutscher Industrieverlag GmbH, 2010; Vol. 151, pp 950–959.
- (15) Deutsche-Forschungsgemeinschaft. *Rückstandsanalytik von Pflanzenschutzmitteln*, Mitteilung VI der Senatskommission für Pflanzenschutz-, Pflanzenbehandlungs- und Vorratsschutzmittel, Methodensammlung der Arbeitsgruppe Analytik; Wiley VCH, 1990; Vol. 11.
- (16) Gustafson, D. I. Groundwater ubiquity score: A simple method for assessing pesticide leachability. *Environ. Toxicol. Chem.* **1989**, *8*, 339–357.
- (17) Grummt, T. In *Gesundheitliche Orientierungswerte (GOW) für nicht relevante Metaboliten (nrM) von Wirkstoffen aus Pflanzenschutzmitteln (PSM)*; Risikobewertung, U. a. B. f., Ed.; Umweltbundesamt and Bundesinstitut für Risikobewertung, 2017; p 12. <https://www.>

umweltbundesamt.de/dokument/gesundheitsliche-orientierungswerte-gow-fuer-nicht.

(18) UBA. *Pflanzenschutzmittelfunde im Grundwasser*; Umweltbundesamt, 2004.

(19) Roberts, M. C.; Croucher, L.; Roberts, T. R.; Hutson, D. H.; Lee, P. W.; Nicholls, P. H.; Plimmer, J. R. *Metabolic Pathways of Agrochemicals: Part 1: Herbicides and Plant Growth Regulators*; Royal Society of Chemistry, 2007.

(20) Lingens, F.; Blecher, R.; Blecher, H.; Blobel, F.; Eberspächer, J.; Fröhner, C.; Görisch, H.; Görisch, H.; Layh, G. *Phenylobacterium immobile* gen. nov., sp. nov., a Gram-Negative Bacterium That Degrades the Herbicide Chloridazon. *Int. J. Syst. Bacteriol.* **1985**, *35*, 26–39.

(21) Farlin, J.; Bayerle, M.; Pittois, D.; Gallé, T. Estimating Pesticide Attenuation From Water Dating and the Ratio of Metabolite to Parent Compound. *Groundwater* **2017**, *55*, 550–557.

(22) Meyer, A. H.; Elsner, M. 13C/12C and 15N/14N Isotope Analysis To Characterize Degradation of Atrazine: Evidence from Parent and Daughter Compound Values. *Environ. Sci. Technol.* **2013**, *47*, 6884–6891.

(23) Hunkeler, D.; Meckenstock, R. U.; Sherwood Lollar, B.; Schmidt, T.; Wilson, J.; Schmidt, T.; Wilson, J. *A Guide for Assessing Biodegradation and Source Identification of Organic Ground Water Contaminants Using Compound Specific Isotope Analysis (CSIA)*, PA 600/R-08/148; U.S. EPA: Oklahoma, 2008. www.epa.gov/ada.

(24) Thullner, M.; Richnow, H.-H.; Fischer, A. Characterization and Quantification of In Situ Biodegradation of Groundwater Contaminants Using Stable Isotope Fractionation Analysis: Advantages and Limitations. *Environmental and Regional Air Pollution*; Gallo, D.; Mancini, R., Eds.; Nova Science Publishers, 2009.

(25) Meckenstock, R. U.; Morasch, B.; Griebler, C.; Richnow, H. H. Stable isotope fractionation analysis as a tool to monitor biodegradation in contaminated aquifers. *J. Contam. Hydrol.* **2004**, *75*, 215–255.

(26) Alvarez-Zaldívar, P.; Payraudeau, S.; Meite, F.; Masbou, J.; Imfeld, G. Pesticide degradation and export losses at the catchment scale: Insights from compound-specific isotope analysis (CSIA). *Water Res.* **2018**, *139*, 198–207.

(27) Melsbach, A.; Ponsin, V.; Torrentó, C.; Lihl, C.; Hofstetter, T. B.; Hunkeler, D.; Elsner, M. 13C and 15N isotope analysis of desphenylchloridazon by liquid chromatography isotope ratio mass spectrometry (LC-IRMS) and derivatization-gas chromatography isotope ratio mass spectrometry (GC-IRMS). *Anal. Chem.* **2019**, *91*, 3412–3420.

(28) Elsner, M. Stable isotope fractionation to investigate natural transformation mechanisms of organic contaminants: principles, prospects and limitations. *J. Environ. Monit.* **2010**, *12*, 2005–2031.

(29) Müller, R.; Schmitt, S.; Lingens, F. A novel non-heme iron-containing dioxygenase. Chloridazon-catechol dioxygenase from *Phenylobacterium immobilis* DSM 1986. *Eur. J. Biochem.* **1982**, *125*, 579–584.

(30) Braeckeveld, M.; Fischer, A.; Kästner, M. Field applicability of Compound-Specific Isotope Analysis (CSIA) for characterization and quantification of in situ contaminant degradation in aquifers. *Appl. Microbiol. Biotechnol.* **2012**, *94*, 1401–1421.

(31) Kopinke, F. D.; Georgi, A.; Voskamp, M.; Richnow, H. H. Carbon isotope fractionation of organic contaminants due to retardation on humic substances: Implications for natural attenuation studies in aquifers. *Environ. Sci. Technol.* **2005**, *39*, 6052–6062.

(32) Fischer, A.; Theuerkorn, K.; Stelzer, N.; Gehre, M.; Thullner, M.; Richnow, H. H. Applicability of Stable Isotope Fractionation Analysis for the Characterization of Benzene Biodegradation in a BTEX-contaminated Aquifer. *Environ. Sci. Technol.* **2007**, *41*, 3689–3696.

(33) Morrill, P. L.; Sleep, B. E.; Seepersad, D. J.; McMaster, M. L.; Hood, E. D.; LeBron, C.; Major, D. W.; Edwards, E. A.; Sherwood Lollar, B. Variations in expression of carbon isotope fractionation of chlorinated ethenes during biologically enhanced PCE dissolution close to a source zone. *J. Contam. Hydrol.* **2009**, *110*, 60–71.

(34) Stehmeier, L. G.; Francis, M. M.; Jack, T. R.; Diegor, E.; Winsor, L.; Abrajano, T. A. Field and in vitro evidence for in-situ bioremediation using compound-specific 13C/12C ratio monitoring. *Org. Geochem.* **1999**, *30*, 821–833.

(35) Hunkeler, D.; Aravena, R.; Parker, B. L.; Cherry, J. A.; Diao, X. Monitoring oxidation of chlorinated ethenes by permanganate in groundwater using stable isotopes: laboratory and field studies. *Environ. Sci. Technol.* **2003**, *37*, 798–804.

(36) Elsner, M.; Lacrampe Couloume, G.; Mancini, S. A.; Burns, L.; Sherwood Lollar, B. Carbon Isotope Analysis to Evaluate Nanoscale Fe(0) Treatment at a Chlorohydrocarbon Contaminated Site. *Ground Water Monit. Rev.* **2010**, *30*, 79–95.

(37) Torrentó, C.; Prasuhn, V.; Spiess, E.; Ponsin, V.; Melsbach, A.; Lihl, C.; Glauser, G.; Hofstetter, T. B.; Elsner, M.; Hunkeler, D. Adsorbing vs. Nonadsorbing Tracers for Assessing Pesticide Transport in Arable Soils. *Vadose Zone J.* **2018**, *17*, No. 170033.

(38) IUSS_Working_Group_WRB. *World Reference Base for Soil Resources 2014, Update 2015—International Soil Classification System for Naming Soils and Creating Legends for Soil Maps*; Food and Agriculture Organization of the United Nations: Rome, 2015; Vol. 106.

(39) Torrentó, C.; Bakkour, R.; Gaétan, G.; Melsbach, A.; Ponsin, V.; Hofstetter, T. B.; Elsner, M.; Hunkeler, D. Solid-phase extraction method for stable isotope analysis of pesticides from large volume environmental water samples. *Analyst* **2019**, *144*, 2898–2908.

(40) Meyer, A. H.; Penning, H.; Lowag, H.; Elsner, M. Precise and accurate compound specific carbon and nitrogen isotope analysis of atrazine: critical role of combustion oven conditions. *Environ. Sci. Technol.* **2008**, *42*, 7757–7763.

(41) Werner, R. A.; Brand, W. A. Referencing strategies and techniques in stable isotope ratio analysis. *Rapid Commun. Mass Spectrom.* **2001**, *15*, 501–519.

(42) Schuhmann, A.; Gans, O.; Weiss, S.; Fank, J.; Klammner, G.; Haberhauer, G.; Gerzabek, M. A long-term lysimeter experiment to investigate the environmental dispersion of the herbicide chloridazon and its metabolites—comparison of lysimeter types. *J. Soils Sediments* **2016**, *16*, 1032–1045.

(43) Stephenson, G. R.; Ries, S. K. Metabolism of Pyrazon in Sugar Beets and Soil. *Weed Sci.* **1969**, *17*, 327–331.

(44) Gatzweiler, E. Das Langzeitverhalten der Herbizidwirkstoffe Chloridazon und 2,4-DP-P nach Praxisanwendung in zwei verschiedenen Boden der Bundesrepublik, 1993.

(45) Pestemer, W.; Malkomes, H.-P. Einfluss von Pflanzenschutzmitteln einer Zuckerrüben-Spritzfolge auf biologische Aktivitäten und auf den Abbau von Chloridazon im Boden. I. Freilandversuche. *Weed Res.* **1983**, *23*, 283–291.

(46) Barra, R.; Vighi, M.; Di Guardo, A. Prediction of surface water input of chloridazon and chlorpyrifos from an agricultural watershed in Chile. *Chemosphere* **1995**, *30*, 485–500.

(47) Capri, E.; Ghebbioni, C.; Trevisan, M. Metamitron and Chloridazon Dissipation in a Silty Clay Loam Soil. *J. Agric. Food Chem.* **1995**, *43*, 247–253.

(48) Elsner, M.; Zwank, L.; Hunkeler, D.; Schwarzenbach, R. P. A new concept linking observable stable isotope fractionation to transformation pathways of organic pollutants. *Environ. Sci. Technol.* **2005**, *39*, 6896–6916.

(49) Elsner, M.; Jochmann, M. A.; Hofstetter, T. B.; Hunkeler, D.; Bernstein, A.; Schmidt, T. C.; Schimmelmann, A. Current challenges in compound-specific stable isotope analysis of environmental organic contaminants. *Anal. Bioanal. Chem.* **2012**, *403*, 2471–2491.

(50) Fang, F.; Pestemer, W.; Malkomes, H.-P. Einfluss von Pflanzenschutzmitteln einer Zuckerrüben-Spritzfolge auf biologische Aktivitäten und auf den Abbau von Chloridazon im Boden. II. Gefäß- und Laborversuche. *Weed Res.* **1983**, *23*, 293–304.