

# Down-regulation of tomato *PHYTOL KINASE* strongly impairs tocopherol biosynthesis and affects prenyllipid metabolism in an organ-specific manner

Juliana Almeida<sup>1</sup>, Mariana da Silva Azevedo<sup>2</sup>, Livia Spicher<sup>3</sup>, Gaétan Glauser<sup>4</sup>, Katharina vom Dorp<sup>5</sup>, Luzia Guyer<sup>6</sup>, Andrea del Valle Carranza<sup>7</sup>, Ramón Asis<sup>7</sup>, Amanda Pereira de Souza<sup>1</sup>, Marcos Buckeridge<sup>1</sup>, Diego Demarco<sup>1</sup>, Cécile Bres<sup>8</sup>, Christophe Rothan<sup>8</sup>, Lázaro Eustáquio Pereira Peres<sup>2</sup>, Stefan Hörtensteiner<sup>6</sup>, Félix Kessler<sup>3</sup>, Peter Dörmann<sup>5</sup>, Fernando Carrari<sup>9</sup> and Magdalena Rossi<sup>1,\*</sup>

<sup>1</sup> Departamento de Botânica, Instituto de Biociências, Universidade de São Paulo, Rua do Matão, 277, 05508-900, São Paulo, Brazil

<sup>2</sup> Departamento de Ciências Biológicas, Escola Superior de Agricultura 'Luiz de Queiroz', Universidade de São Paulo, Av. Pádua Dias, 11, CP 09, 13418-900, Piracicaba, Brazil

<sup>3</sup> Laboratory of Plant Physiology, University of Neuchâtel, 2000 Neuchâtel, Switzerland

<sup>4</sup> Neuchâtel Platform of Analytical Chemistry, University of Neuchâtel, 2000 Neuchâtel, Switzerland

<sup>5</sup> Institute of Molecular Physiology and Biotechnology of Plants, University of Bonn, D-531 15 Bonn, Germany

<sup>6</sup> Institute of Plant Biology, University of Zurich, Zollikerstrasse 107, CH-8008 Zurich, Switzerland

<sup>7</sup> CIBICI, Facultad de Ciencias Químicas, Universidad Nacional de Córdoba, CC 5000, Córdoba, Argentina

<sup>8</sup> INRA and Université de Bordeaux, UMR 1332 Biologie du Fruit et Pathologie, F-33140 Villenave d'Ornon, France

<sup>9</sup> Instituto de Biotecnología, Instituto Nacional de Tecnología Agropecuaria and Consejo Nacional de Investigaciones Científicas y Técnicas, PO Box 25, B1712WAA, Castelar, Argentina

\* To whom correspondence should be addressed. E-mail: mmrossi@usp.br

## Abstract

Tocopherol, a compound with vitamin E (VTE) activity, is a conserved constituent of the plastidial antioxidant network in photosynthetic organisms. The synthesis of tocopherol involves the condensation of an aromatic head group with an isoprenoid prenyl side chain. The latter, phytyl diphosphate, can be derived from chlorophyll phytyl tail recycling, which depends on phytyl kinase (VTE5) activity. How plants co-ordinate isoprenoid precursor distribution for supplying biosynthesis of tocopherol and other prenyllipids in different organs is poorly understood. Here, *Solanum lycopersicum* plants impaired in the expression of two VTE5-like genes identified by phylogenetic analyses, named *SIVTE5* and *SIFOLK*, were characterized. Our data show that while *SIFOLK* does not affect tocopherol content, the production of this metabolite is >80% dependent on *SIVTE5* in tomato, in both leaves and fruits. VTE5 deficiency greatly impacted lipid metabolism, including prenylquinones, carotenoids, and fatty acid phytyl esters. However, the prenyllipid profile greatly differed between source and sink organs, revealing organ-specific metabolic adjustments in tomato. Additionally, VTE5-deficient plants displayed starch accumulation and lower CO<sub>2</sub> assimilation in leaves associated with mild yield penalty. Taken together, our results provide valuable insights into the distinct regulation of isoprenoid metabolism in leaves and fruits and also expose the interaction between lipid and carbon metabolism, which results in carbohydrate export blockage in the VTE5-deficient plants, affecting tomato fruit quality.

**Key words:** Carotenoids, chlorophyll, phytyl, phytyl kinase, prenyllipids, *Solanum lycopersicum*, tocopherol, tomato, vitamin E.

## Introduction

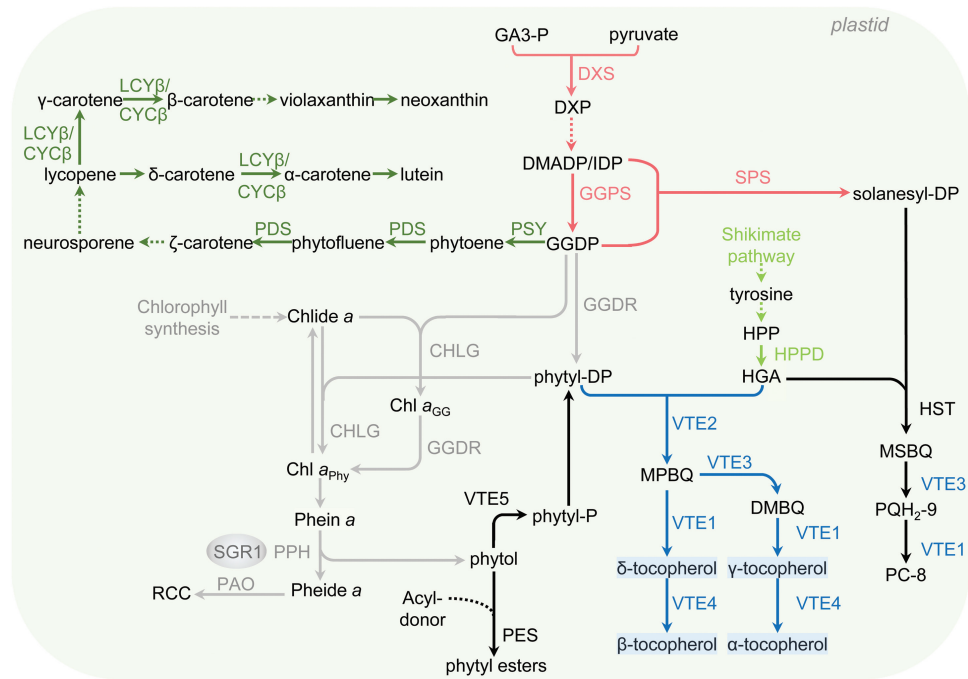
Tocopherols are potent lipid-soluble antioxidants synthesized only by photosynthetic organisms and, together with tocotrienols, are collectively referred to as vitamin E (VTE) compounds (Kamal-Eldin and Appelqvist, 1996; DellaPenna and Pogson, 2006). Since plants are the major source of VTE required for human nutrition, understanding of the mechanisms underlying its synthesis and accumulation in crop species is of great interest (Grusak and DellaPenna, 1999; Fitzpatrick *et al.*, 2012). The antioxidant function of tocopherols relies on their ability to scavenge peroxy radicals, limiting lipid oxidation of polyunsaturated fatty acids (PUFAs) (Serbinova *et al.*, 1991; Traber and Atkinson, 2008), and also singlet oxygen ( $^1\text{O}_2$ ) (Di Mascio *et al.*, 1990; Kaiser *et al.*, 1990; Fukuzawa *et al.*, 1997). In plants, light-driven photosynthetic processes are the main contributors to reactive oxygen species (ROS) production in chloroplasts owing to electron transport chains and photosensitizing molecules such as chlorophyll (Chl) (Edreva, 2005; Demmig-Adams *et al.*, 2014). The delicate equilibrium between ROS production and their detoxification in chloroplast, which determines damage, protection, or signaling response, is controlled by a diversified ROS-scavenging system, including non-enzymatic antioxidant mechanisms (Edreva, 2005; Foyer and Noctor, 2005). Tocopherols, as part of the photoprotective machinery, are particularly involved in controlling the level of  $^1\text{O}_2$  in photosystem II (PSII), and the extent of lipid peroxidation in thylakoid membranes especially under stress conditions (Triantaphylidès and Havaux, 2009; Rastogi *et al.*, 2014; Miret and Munné-Bosch, 2015). Beyond photoprotective roles, tocopherol is also involved in seed longevity, seedling germination (Sattler *et al.*, 2004; Mène-Saffrané *et al.*, 2010), and photoassimilate export (Maeda *et al.*, 2006, 2008; Asensi-Fabado *et al.*, 2014); although, for the latter, the precise underlying mechanism remains elusive (Maeda *et al.*, 2014).

Accumulation of tocopherol in plant tissues is a tightly controlled process, and several studies determined that tocopherol levels change significantly during plant growth and development, as well as in response to environmental stimuli including high light, low temperature, salt, and osmotic stress (Munné-Bosch, 2005; Maeda *et al.*, 2006; Abbasi *et al.*, 2007; Loyola *et al.*, 2012; Quadrana *et al.*, 2013; Eugeni-Piller *et al.*, 2014). Additionally, transgenic approaches have demonstrated that VTE content correlates with the expression of the biosynthesis- and recycling-related genes (reviewed by DellaPenna and Mène-Saffrané, 2011). Tocopherol synthesis occurs in plastids and requires two precursors, a prenyl side chain and a tyrosine catabolite-derived head group (Fig. 1). The prenyl moiety phytyl diphosphate and homogentisate derived from the plastidial 2-C-methyl-D-erythritol 4-phosphate (MEP) and the shikimate pathway, respectively, are condensed by homogentisate phytyl transferase (VTE2), the only enzyme unique for tocopherol synthesis. From this precursor, the four naturally occurring tocopherol forms ( $\alpha$ -,  $\beta$ -,  $\gamma$ -, and  $\delta$ -tocopherol), which vary in the methylation pattern of the chromanol ring, are synthesized via the action of dimethyl-phytylquinol

methyl transferase (VTE3), tocopherol cyclase (VTE1), and tocopherol  $\gamma$ -methyl transferase (VTE4). These enzymes are also responsible for the synthesis of the other tocopherol compounds, which include not only tocotrienols but also plastochromanol (PC-8), a product of plastoquinone (PQ-9) cyclization (Zbierzak *et al.*, 2010).

In addition to the *de novo* synthesis, the phytyl diphosphate precursor may also originate from Chl turnover or degradation, by the release of a phytol moiety from the tetrapyrrole ring. Intriguingly, the precise identity of the tocopherol biosynthesis-related phytol hydrolase remains to be determined. In *Arabidopsis thaliana*, the absence of the known dephytylating enzymes, pheophytinase (PPH) and chlorophyllase (CLH), in triple mutants does not alter seed tocopherol content, whereas seed-specific *PPH*-overexpressing transgenic lines exhibit modestly increased tocopherol levels (Zhang *et al.*, 2014). The hydrolyzed phytol is sequentially phosphorylated by two enzymes, phytol kinase (VTE5) and phytyl-phosphate kinase (VTE6) (Ischebeck *et al.*, 2006; Valentin *et al.*, 2006; vom Dorp *et al.*, 2015). VTE5 has been characterized in *Arabidopsis* where its mutant allele, *vte5*, causes a substantial reduction of the tocopherol content in seeds and to a lesser extent in leaves (Valentin *et al.*, 2006). Furthermore, based on sequence similarity, a locus encoding a putative VTE5 paralog was identified in *Arabidopsis*, which further was characterized as a farnesol kinase (FOLK) (Fitzpatrick *et al.*, 2011). However, its involvement in tocopherol biosynthesis was not addressed. So far, VTE5 has only been characterized in *Arabidopsis*, and its contribution to tocopherol content is largely unknown in other species and organs, such as in edible fleshy fruits. Moreover, the impact of VTE5 deficiency on plant metabolism remains unexplored. *Solanum lycopersicum* is an interesting model species for studying tocopherol metabolism. Besides being an important food crop worldwide, the fruits are a significant source of VTE for the human diet (Chun *et al.*, 2006). Additionally, tomato ripening, which encompasses the conversion of chloroplasts into chromoplasts, couples Chl degradation and an active MEP pathway (Seymour *et al.*, 2013), both sources of the prenyl precursor for tocopherol biosynthesis (Almeida *et al.*, 2015). A previous study on the regulation of tocopherol biosynthesis in this species demonstrated a strong correlation between *VTE5* mRNA levels and the contents of Chl and tocopherol in tomato leaves and fruits, suggesting the contribution of phytol recycling to tocopherol biosynthesis (Quadrana *et al.*, 2013). Moreover, expression analysis of senescence-related tomato mutants suggested that maintenance of the *de novo* phytyl diphosphate synthesis might, at later ripening stages, compensate for the lack of Chl-derived phytol for tocopherol production in fruits (Almeida *et al.*, 2015).

To better understand the extent of the contribution of the VTE5-dependent phytol pathway to tocopherol biosynthesis in source and sink organs, we functionally characterized *VTE5*-like genes in tomato. Tocopherol content was dramatically compromised in both leaves and fruits of *SIVTE5*-knockdown plants. In contrast, analyses of the *folk* mutant genotype ruled out *SIFOLK* as a major contributor



**Fig. 1.** Schematic view of tocopherol biosynthetic and related pathways. The genes are the following: 1-deoxy-D-xylulose-5-P synthase (DXS); geranylgeranyl diphosphate reductase (GGDR); 4-hydroxyphenylpyruvate dioxygenase (HPPD); homogentisate phytyl transferase (VTE2); 2,3-dimethyl-5-phytylquinol methyltransferase (VTE3); tocopherol cyclase (VTE1);  $\gamma$ -tocopherol-C-methyl transferase (VTE4); phytoene synthase (PSY); phytoene desaturase (PDS); chloroplast-specific  $\beta$ -lycopene cyclase (LCY $\beta$ ); chromoplast-specific  $\beta$ -lycopene cyclase (CYC $\beta$ ); chlorophyll synthase (CHLG); staygreen 1 (SGR1); pheophytinase (PPH); pheophorbide a oxygenase (PAO); phytol kinase (VTE5); farnesol kinase (FOLK); homogentisate solanesyl transferase (HST); solanesyl diphosphate synthase (SPS). Abbreviated intermediate metabolites are: glyceraldehyde 3-phosphate (GA3-P); 1-deoxy-D-xylulose-5-P (DXP); isopentenyl diphosphate (IDP); dimethylallyl diphosphate (DMADP); geranylgeranyl diphosphate (GGDP); hydroxyphenylpyruvate (HPP); homogentisate (HGA); chlorophyllide a (Chlide a); geranylgeranyl-chlorophyll a (Chl  $a_{GG}$ ); phytylated chlorophyll a (Chl  $a_{Phy}$ ); pheophytin a (Pheol a); pheophorbide a (Pheide a); red chlorophyll catabolite (RCC); 2-methyl-6-geranylgeranylbenzoquinol (MPBQ); 2,3-dimethyl-6-geranylgeranylbenzoquinol (DMBQ); 2-methyl-6-solanlyl-1,4-benzoquinol (MSBQ); plastoquinol-9 (PQH<sub>2</sub>-9); plastoquinol-8 (PC-8).

to phytol kinase activity required for tocopherol biosynthesis. Additionally, VTE5 deficiency differentially impacts fatty acid phytyl ester and prennylipid metabolism in fruits and leaves, and also has consequences in photosynthesis and sugar partitioning.

## Materials and methods

### Plant material, growth conditions, and sampling

Seeds of tomato (*Solanum lycopersicum*, cv. Micro-Tom) were obtained from the Laboratory of Hormonal Control of Plant Development ([www.esalq.usp.br/tomato](http://www.esalq.usp.br/tomato)). The *folk-1* tomato mutant was isolated from an ethyl methanesulfonate (EMS)-mutagenized Micro-Tom collection from INRA, France. Plants were grown in a greenhouse under automatic irrigation at an average temperature of 25 °C, 11.5h/13h (winter/summer) photoperiod, and 250–350  $\mu\text{mol m}^{-2} \text{s}^{-1}$  of incident photoirradiance. Source (the first fully expanded leaf) and sink (the first apical leaf not fully expanded) leaves were sampled. Fruits were harvested at mature green, 1 d after breaker (B+1), 3 d after breaker (B+3), and ripe (B+6) stages at 35, 38, 40, and 43 d after anthesis, respectively. Samples were frozen in liquid N<sub>2</sub> and stored at –80 °C. All biochemical analyses were performed in the T<sub>1</sub> generation. For photosynthesis and yield evaluation, an independent experiment in the T<sub>2</sub> generation was performed. Destructive harvest took place at a point where the largest possible numbers of fruits were ripe without visible over-ripening (15 weeks old) (Vicente *et al.*, 2015). At harvest time, aerial biomass was weighed and all the fruits were counted and weighed.

### Phylogenetic analysis

For phylogenetic analysis, Blastp searches were performed using the protein sequences of *A. thaliana* VTE5 (At5g04490) and FOLK (At5g58560) as queries against the tomato genome (<http://solgenomics.net>). Homologous sequences from other plant species were retrieved by Blastp from the Phytozome database (<http://phytozome.jgi.doe.gov/pz/portal.html>). *Nicotiana benthamiana* sequences were obtained from the Sol Genomics Network database (<http://solgenomics.net>). The sequences were aligned using the MUSCLE package available in the MEGA 5.0 software with default parameters (Tamura *et al.*, 2007), and Neighbor-Joining phylogenies with 5000 bootstrap replications were created with the distances calculated according to the best model indicated by MEGA 5.0.

### Generation of SIVTE5-RNAi transgenic lines

Transgenic plants expressing a *SIVTE5*-specific intron-spliced hairpin sequence under the control of the *Cauliflower mosaic virus* 35S promoter were obtained for RNAi-mediated silencing of the Solyc03g071720 locus. A 237 bp fragment of *SIVTE5* was amplified by PCR using the primers RNAi-VTE5-F and RNAi-VTE5-R listed in Supplementary Table S1 available at *JXB* online. PCR products were cloned into pENTR/d-TOPO vector (Invitrogen) via directional cloning, and then recombined into the binary vector pK7GWIWG2 (Karimi *et al.*, 2002) to generate pK7GWIWG2(1)-*SIVTE5*. *Agrobacterium*-mediated transformation (strain EHA105)

of *S. lycopersicum* was performed according to Pino *et al.* (2010). The presence of the transgene in T<sub>0</sub>, T<sub>1</sub>, and T<sub>2</sub> kanamycin-resistant plants was detected by PCR in genomic DNA using 35S-right and RNAi-VTE5-R primers (see Supplementary Table S1).

#### Identification of the folk-1 tomato mutant by TILLING

Mutations in *SIFOLK* were identified by screening an EMS-mutagenized tomato population (Just *et al.*, 2013) essentially as described in Okabe *et al.* (2011). TILLING (Targeting Induced Local Lesions In Genomes) unlabeled external primers and internal primers 5' labeled with IRDye 700 and IRDye 800 dye are listed in Supplementary Table S1 at JXB online. Induced point mutations were identified using the mismatch-specific endonuclease ENDO 1. Digested DNA fragments were separated on a Li-Cor DNA analyzer (LI-Cor, Lincoln, NE, USA). The mutation analysis was performed using PARSESNP (Taylor and Greene, 2003) and SIFT (Ng and Henikoff, 2003) software. Homozygous mutant plants were identified by sequencing of the tilled M<sub>3</sub> family. Phenotypic characterization was performed in M<sub>4</sub> plants homozygous for the *folk-1* allele using the corresponding segregating individuals homozygous for the *FOLK* wild-type allele as control genotype.

#### qPCR analysis

RNA extraction, cDNA synthesis, and real-time quantitative PCR (qPCR) assays were performed as described by Quadrana *et al.* (2013). Primer sequences are listed in Supplementary Table S1 at JXB online. qPCRs were performed in a 7500 real-time PCR system (Applied Biosystems) using 2× SYBR Green Master Mix reagent (Applied Biosystems). Expression values were normalized against the geometric mean of two reference genes, *CAC* and *EXPRESSED*, according to Quadrana *et al.* (2013). A permutation test lacking sample distribution assumptions (Pfaffl *et al.*, 2002) was applied to detect statistical differences ( $P < 0.05$ ) in expression ratios using the algorithms in the fgStatistics software package (Di Rienzo, 2009).

#### Leaf gas exchange and fluorescence measurements

Gas exchange and Chl fluorescence parameters were evaluated in 5-week-old plants using a portable open gas-exchange system incorporating infra-red CO<sub>2</sub> and water vapor analyzers (LI-6400XT system; Li-Cor) equipped with an integrated modulated Chl fluorometer (LI-6400-40; Li-Cor). Reference [CO<sub>2</sub>] was held at 400 μmol mol<sup>-1</sup> and the temperature at 25 °C for all measurements. Air humidity inside the leaf chamber was controlled to the externally measured greenhouse relative humidity (50–60%). Carbon assimilation rate (*A*), leaf stomatal conductance (*g<sub>s</sub>*), leaf dark respiration (*R<sub>d</sub>*), and fluorescence parameters were measured at a photosynthetic photon flux density (PPFD) of 600 μmol m<sup>-2</sup> s<sup>-1</sup> in the first fully expanded leaf between 10:00h and 14:00h. The parameters derived from Chl fluorescence, including light-adapted PSII maximum quantum efficiency ( $F'_v/F'_m$ ), proportion of open PSII centers (photochemical quenching, *qP*), and PSII operating efficiency ( $\Phi_{PSII}$ ), were calculated according to Genty *et al.* (1989).

#### Tocopherol, free phytol, and fatty acid phytyl ester quantification

Tocopherols were extracted and measured by HPLC as previously described (Yang *et al.*, 2011). For determination of fatty acid phytyl esters (FAPEs) and free phytol, total lipids were extracted with chloroform according to Lippold *et al.* (2012). Non-polar lipids were purified using chromatography on silica columns (Kieselgel 60; Merck). FAPEs were measured by direct infusion nanospray quadrupole time-of-flight tandem mass spectrometry (Q-TOF-MS/MS; Agilent 6530 Accurate Mass Q-TOF) using methanol:chloroform:300 mM ammonium acetate [665:300:35 (v/v/v); Welti *et al.*, 2002] as the solvent system. FAPEs were detected in the positive ion mode by neutral loss scanning for *m/z* 278.2974, a fragment characteristic

for the phytol moiety. For phytol measurements, the non-polar lipid fraction was silylated and then phytol was quantified by GC-MS as previously described (Lippold *et al.*, 2012).

#### Prenylquinone and carotenoid profile

Prenylquinone and related compounds ( $\alpha$ -tocopherolquinone, PQ-9, plastoquinol-9, hydroxy-plastoquinone, PC-8, hydroxy-plastochromanol, and ubiquinone-10) were analyzed by a targeted analysis of the lipidomic profile obtained by ultra-HPLC coupled with atmospheric pressure chemical ionization-quadrupole time-of-flight mass spectrometry (UHPLC-APCI-QTOF-MS) as described in Martinis *et al.* (2013) with the following modifications. Briefly, 15 mg of lyophilized tissue were exactly weighed and resuspended in 500 μl of tetrahydrofuran:methanol:water 42.5:42.5:15 (v/v/v). The mixture was homogenized using glass beads (1 mm in diameter) for 3 min at 30 Hz in a tissue lyser. After two rounds of centrifugation (3 min, 14 000 g, and 4 °C), supernatants were transferred to vials. Prenyllipids were separated on a reverse-phase Acquity BEH C18 column (50 × 2.1 mm, 1.7 μm) under the following conditions: solvent A=water; solvent B=methanol; 80–100% B in 3 min, 100% B for 2 min, re-equilibration at 90% B for 0.5 min. The flow rate was 0.8 ml min<sup>-1</sup> and the injection volume was 2.5 μl. PQ-9 and PC-8 were quantified based on calibration curves obtained from standard compounds. Data were processed using MassLynx version 4.1 (Waters).

Carotenoids were extracted and detected as described in Almeida *et al.* (2015) using an Agilent 1200 Series HPLC system coupled with a diode array detector on a reverse phase column [Zorbax Eclipse Plus C18 (150 mm × 4.6 mm, 5 μm), Agilent Technologies]. Compounds were identified at 440 nm by their order of elution and absorption spectra (Gupta *et al.*, 2015), and co-migration with authentic standards (all-*trans*-lycopene, all-*trans*- $\beta$ -carotene, lutein, violaxanthin, neoxanthin, and zeaxanthin). Relative quantification was performed based on chromatographic peak area normalized against sample dry weight.

#### Chlorophyll and chlorophyll catabolites

Chl and green catabolites (chlorophyllide, pheophorbide, and pheophytin) were extracted from 10 mg of lyophilized tissue during 17 h at –20 °C in 90% (v/v) acetone, 10% (v/v) 0.2 M TRIS-HCl, pH 8.0, pre-cooled to –20 °C (5 ml g<sup>-1</sup> initial fresh weight). After centrifuging twice (2 min, 16 000 g, 4 °C), supernatants were analyzed by HPLC as described (Langmeier *et al.*, 1993). Pigments were identified by their absorption spectra at 665 nm. For quantification, peak areas were analyzed and referred to calibration curves built from known quantities of standard pigments (Schelbert *et al.*, 2009).

#### Quantification of soluble sugars and starch

A 10 mg aliquot of the lyophilized samples was extracted five times with 1.5 ml of 80% ethanol at 80 °C according to De Souza *et al.* (2013). Combined supernatants were dried under vacuum and resuspended in 1 ml of ultrapure water. To remove pigments, an extraction with 0.5 ml of chloroform was performed. Alcohol-soluble sugar quantification was done by high-performance anion exchange chromatography with pulsed amperometric detection (HPAEC/PAD) (Dionex-ICS3000, Dionex). Sugar separation was carried out on a CarboPac PA1 column using isocratic elution of 150 mM NaOH with a flow rate of 1 ml min<sup>-1</sup>. The calibration curves were prepared using standard solutions of glucose, fructose, and sucrose with a concentration range from 50 μM to 200 μM.

For starch quantification, the dried insoluble material obtained after ethanol extraction was treated with  $\alpha$ -amylase (120 U ml<sup>-1</sup>, Megazyme) from *Bacillus licheniformis* and amyloglucosidase (30 U ml<sup>-1</sup>, Megazyme) from *Aspergillus niger* according to Amaral *et al.* (2008). The glucose content obtained after starch hydrolysis was determined from extract aliquots of 20 μl and 50 μl for leaves and

fruits, respectively, after an incubation with glucose oxidase/oxidase and D-4-aminoantipyrine (GOD/POD). Absorbance of quinoneimine dye, which is directly proportional to glucose concentration, was measured spectrophotometrically using an ELISA-type microplate reader at 490 nm. A standard curve was prepared using high purity glucose solution (Sigma) ranging from 2.5  $\mu\text{g ml}^{-1}$  to 12.5  $\mu\text{g ml}^{-1}$ .

#### *Trolox equivalent antioxidant capacity (TEAC) assay*

The antioxidant capacity of non-polar extracts was assayed as previously described (Re *et al.*, 1999), with minor modifications. The pre-formed radical 2,2'-azin-bis-(3-ethylbenzothiazoline-6-sulfonic acid) (ABTS<sup>•+</sup>) was produced by oxidation of 7 mM ABTS with potassium persulfate (2.45 mM final concentration) dissolved in ultrapure water. The mixture was incubated in the dark at room temperature for 12–16 h before use. The ABTS<sup>•+</sup> solution was diluted with ethanol and adjusted to  $0.70 \pm 0.02$  absorbance units at 734 nm. A 50  $\mu\text{l}$  aliquot of diluted extract or Trolox standard was mixed with 150  $\mu\text{l}$  of diluted ABTS<sup>•+</sup> solution, and the absorbance was read at 734 nm after 10 min at 30 °C. The ABTS<sup>•+</sup> antioxidant capacity was reported as  $\mu\text{mol}$  of TEAC per gram of sample on a dry weight basis by comparison with a Trolox standard curve (0.015–0.50 mM). Analyses were run in triplicate at two dilutions for a total of six assays per sample.

#### *Transmission electron microscopy*

Leaf segments were fixed at 4 °C in Karnovsky's solution [2.5% glutaraldehyde, 2% (v/v) paraformaldehyde in 0.1 M sodium phosphate buffer pH 7.2] for 24 h. After washing in buffer, the samples were post-fixed in buffered 1% (w/v) osmium tetroxide, washed, dehydrated in a graded series of acetone, and embedded in Spurr resin. The resin was polymerized at 60 °C. Ultrathin sections were stained with saturated uranyl acetate (Watson, 1958) and lead citrate (Reynolds, 1963), and observed using a Zeiss EM 900 transmission electron microscope.

#### *Data analyses*

Statistical analyses were performed using R statistical software (www.r-project.org). To determine significant differences between the transgenic lines and the control, data were analyzed by *t*-test or ANOVA followed by a Dunnett's multiple comparison test with the level of significance set to 0.05.

## Results

### *Tomato tocopherol contents are highly dependent on SIVTE5 but not on SIFOLK*

By using the *A. thaliana* VTE5 protein sequence (At5g04490; Valentin *et al.*, 2006) as query, a survey for homologous sequences in the *S. lycopersicum* genome was performed in the Solanaceae Genomics Network (<http://solgenomics.net/>). Two loci were identified, Solyc03g071720 and Solyc09g018510. In order to establish the orthology relationships, a phylogenetic analysis was performed with VTE5 homologous protein sequences of 14 flowering species with completely sequenced genomes. The tree revealed two clades whose topology coincided with the established phylogenetic relationships between the analyzed species. One clade contains the Arabidopsis VTE5 protein sequence (Valentin *et al.*, 2006) that clustered together with Solyc03g071720. The other clade groups At5g58560, an earlier proposed VTE5 paralog

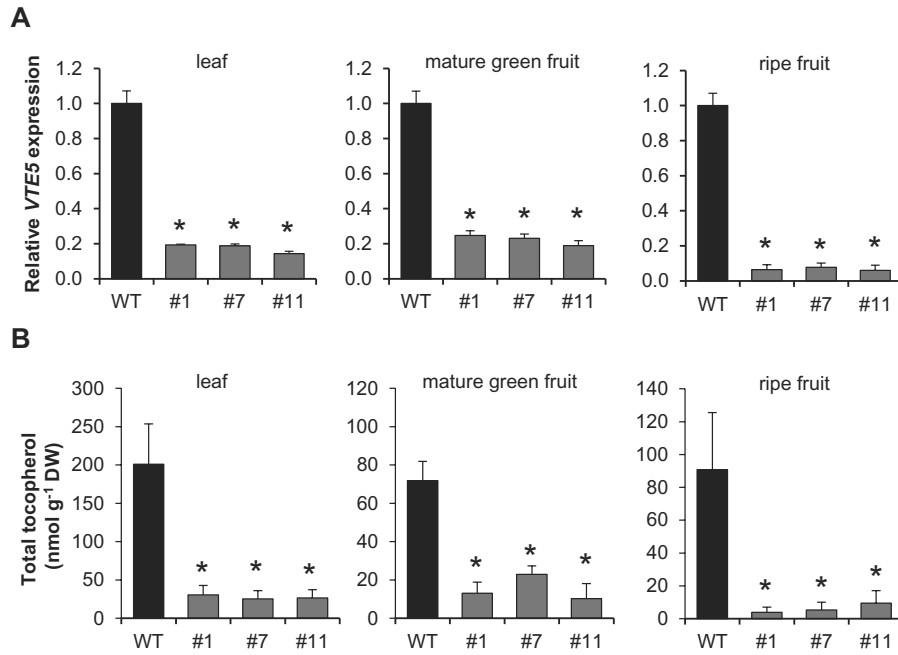
that was further identified as a farnesol kinase (FOLK; Fitzpatrick *et al.*, 2011), together with Solyc09g018510. This analysis displayed VTE5 and FOLK proteins as sister clades, and the respective genes were named *SIVTE5* and *SIFOLK* (see Supplementary Fig. S1 at *JXB* online). Both genes showed similar expression patterns, with the highest mRNA levels found in green tomato tissues (Supplementary Fig. S2).

In order to obtain experimental evidence regarding *SIVTE5* function in tocopherol biosynthesis, transgenic *SIVTE5*-knockdown plants were generated by RNAi-mediated silencing. Out of eight primary transformants that showed reduced levels of *SIVTE5* mRNA (see Supplementary Fig. S3 at *JXB* online), three lines with a reduction of >80% were selected for further analyses; *SIVTE5*-RNAi#1, *SIVTE5*-RNAi#7, and *SIVTE5*-RNAi#11 (Fig. 2A). Under normal growth conditions, these transgenic lines exhibited no evident morphological alterations and an apparently unaltered pattern of fruit degreening (Supplementary Fig. S3B).

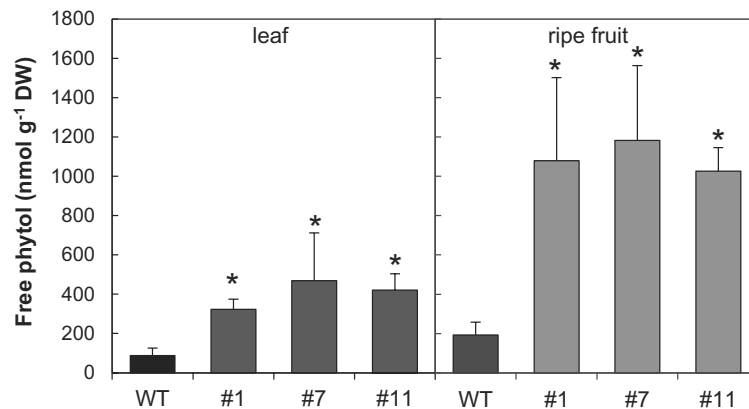
HPLC analysis revealed that down-regulation of *SIVTE5* resulted in a dramatic reduction (80–90%) of total tocopherol contents both in leaves and in fruits (Fig. 2B). Overall, no differences in tocopherol composition were observed (Supplementary Table S2 at *JXB* online) except for line #7 at the mature green stage. Notably, we detected only traces of tocotrienols in *SIVTE5*-RNAi lines (data not shown). These results ruled out the possibility that depletion of tocopherols could be compensated by tocotrienol production in these plants.

The VTE5 deficiency in transgenic lines would be expected to increase free phytol content (Valentin *et al.*, 2006). We therefore assayed the amount of this metabolite by GC-MS. While in mature leaves and ripe fruits of wild-type tomato plants the amount of free phytol ranged from 100 nmol g<sup>-1</sup> DW to 190 nmol g<sup>-1</sup> DW, in the counterparts from *SIVTE5*-RNAi lines this prenol alcohol accumulated four to five times more (Fig. 3). Interestingly, the molar amount of free phytol that accumulated in leaves was of the same order of magnitude as the reduction observed in total tocopherol contents. Strikingly, the increase in the amounts of free phytol in transgenic ripe fruits was 10 times higher than the decrease in tocopherol (Supplementary Table S3 at *JXB* online), suggesting differential regulation in the response of phytol metabolism perturbations in source and sink tomato organs.

Due to sequence similarity between the tomato phosphatidate cytidyltransferases proteins *SIVTE5* and *SIFOLK*, and the lack of a complete functional characterization of the latter, the putative impact of *SIFOLK* on tocopherol metabolism was also explored. In this case, a TILLING-based molecular screening was applied to identify a loss-of-function mutation in *SIFOLK* using an EMS-mutagenized tomato collection. Among the identified mutants, one, named *folk-1*, displayed a G to A substitution disrupting the 3' splicing site of intron 4. Sequence analyses of *folk-1* cDNA from homozygous mutant plants revealed that this lesion led to the use of a cryptic splicing site in intron 4, producing an mRNA that lacks exon 4 and contains a fragment of intron 4 (see Supplementary Fig. S4A at *JXB* online). This abnormally spliced transcript of *FOLK*, which is the only isoform



**Fig. 2.** Down-regulation of *SIVTE5* expression and tocopherol content in *SIVTE5*-RNAi transgenic lines. (A) Relative expression of the *SIVTE5* gene in the wild-type (WT) and *SIVTE5*-RNAi lines (#1, #7 and #11). Data are means  $\pm$ SEM of five biological replicates. The asterisks denote statistically significant differences (permutation test,  $P < 0.05$ ). (B) Total tocopherol was measured in leaves, mature green, and ripe fruits of *SIVTE5*-RNAi lines. Data represent the mean  $\pm$ SD of five biological replicates. The asterisks denote significant differences between the WT and the transgenic lines (ANOVA/Dunnett's test,  $P < 0.05$ ).



**Fig. 3.** Free phytol content in leaves and ripe fruits of the *SIVTE5*-RNAi transgenic lines. Data represent the mean  $\pm$ SD of at least three biological replicates. The asterisks denote significant differences between the wild-type (WT) and the transgenic lines (ANOVA/Dunnett's test,  $P < 0.05$ ).

detected in the mutant, contains an in-frame premature stop codon that presumably leads to a truncated protein (Fig. 4A; Supplementary Fig. S4A, B). mRNA harboring premature termination codons can be recognized by the RNA surveillance machinery as aberrant; these transcripts may be targeted by the nonsense-mediated decay pathway, being rapidly degraded (Filichkin *et al.*, 2015). Expression analysis by qPCR showed that the amount of the abnormal mRNA in *folk-1* corresponded to only 10% of the fully spliced transcript found in control plants (Supplementary Fig. S4C). Tocopherol levels and composition in plants homozygous for the *folk-1* allele were much the same as those in control plants, suggesting a small, if any, contribution of *SIFOLK* to tocopherol biosynthesis in both leaves and fruits (Fig. 4B;

Supplementary Table S2). Having demonstrated the major role of *VTE5* in tomato tocopherol metabolism, we further performed a comprehensive phenotypic characterization of *SIVTE5*-RNAi lines.

#### *Down-regulation of SIVTE5 boosted phytol ester synthesis in leaves*

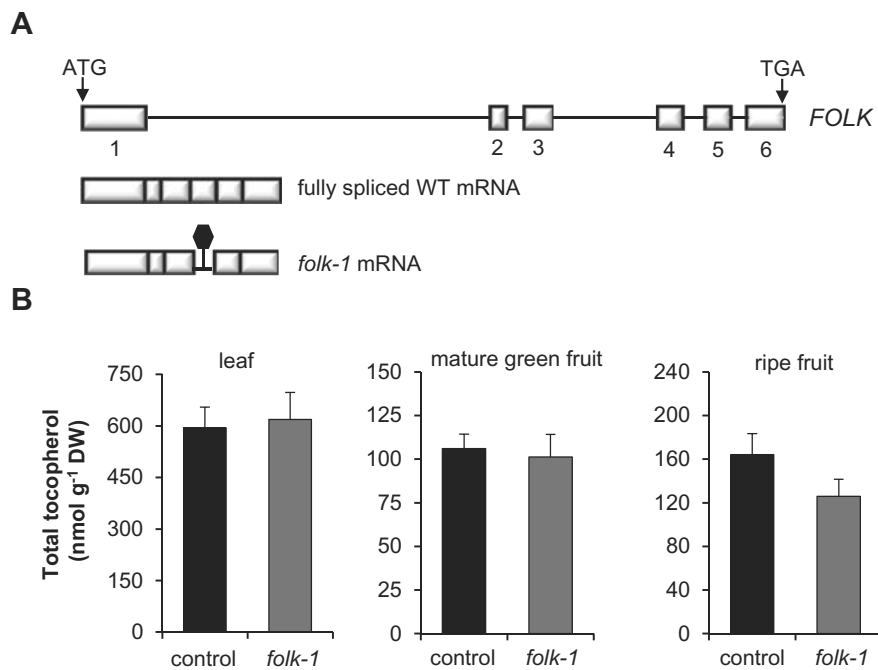
Free phytol can be esterified directly with fatty acids derived from activated acyl groups. FAPes increase during stress-associated Chl degradation (e.g. nitrogen deprivation) and senescence (Gaude *et al.*, 2007; Lippold *et al.*, 2012). To address the question of whether the increased phytol levels affect FAPE contents in the *SIVTE5*-RNAi lines, the level of

these compounds was measured by direct infusion Q-TOF MS/MS. Notably, *SIVTE5* knockdown resulted in a dramatic increase of FAPE content up to 10-fold in leaves. In contrast, fruits from *SIVTE5*-RNAi lines exhibited levels of FAPE identical to those of wild-type plants (Fig. 5). In addition to the total amount, FAPE composition was also highly affected in transgenic leaves (Fig. 6A). With the exception of palmitic (16:0) and linolenic (18:3) acids, analysis of the lipid profiles showed that the contribution of the different acyl chains was not proportional to the increment in total FAPE content observed in *SIVTE5*-RNAi lines. In particular, FAPes containing oleic acid (18:1), hexadecatrienoic acid (16:3), and medium-chain fatty acids (10:0, 12:0, 14:0) exhibited a reduction in their relative content, while FAPes containing stearic acid (18:0) and linoleic acid (18:2) became the predominant

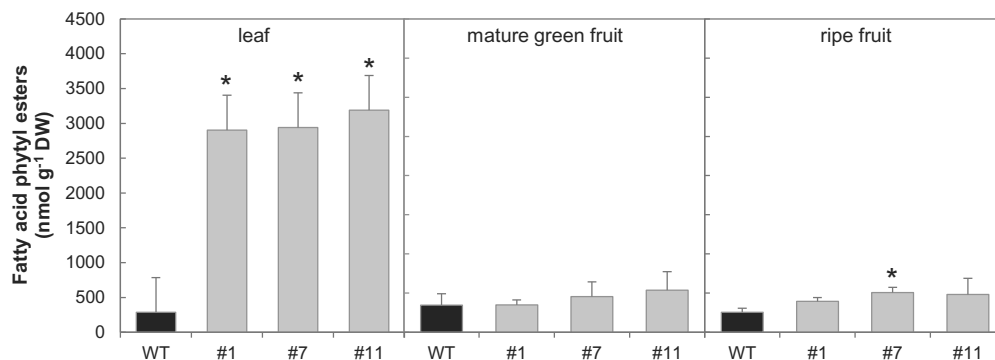
forms, increasing at least 2-fold in transgenic leaves compared with the wild-type. In *SIVTE5*-RNAi fruits, the FAPE composition at mature green and ripe stages remained almost unchanged (Fig. 6B, C).

#### *Chlorophyll content is not affected in SIVTE5-RNAi lines*

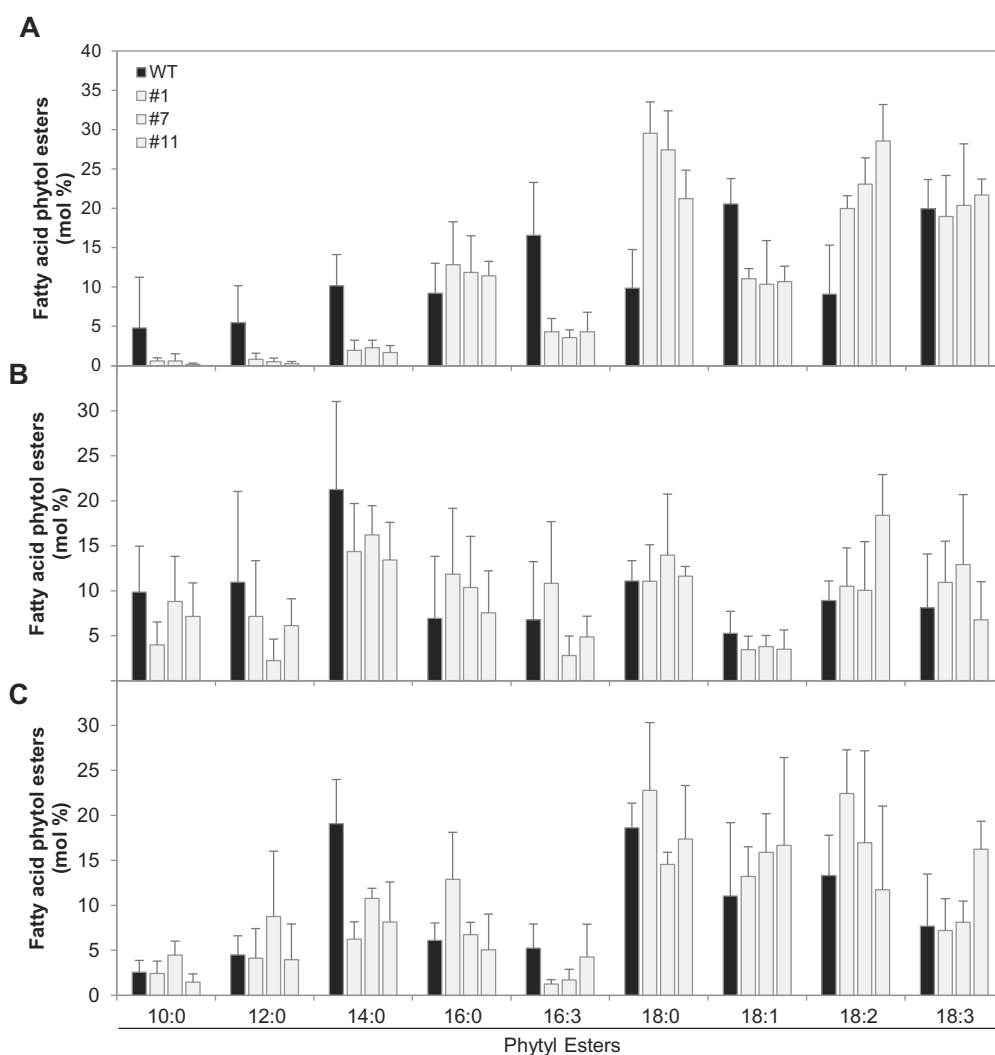
To examine whether *SIVTE5* knockdown affects Chl metabolism, we determined Chl *a*, Chl *b*, and pheophytin *a* (Phein *a*) levels in leaves and fruits at three different ripening stages by HPLC. The contents of these compounds were largely unaltered in both tested organs, suggesting that accumulation of phytol did not significantly affect Chl and Phein *a* levels in tomato (Fig. 7).



**Fig. 4.** Total tocopherol content in the *folk-1* mutant. (A) Diagram showing the *SIFOLK* gene and fully spliced mRNA found in the wild-type (WT) and abnormally spliced mRNA found in the *folk-1* mutant. Boxes and solid lines represent exons and introns, respectively. The premature stop codon is indicated by a black hexagon. (B) Total tocopherol was measured in leaves, mature green, and ripe fruits of M<sub>4</sub> plants homozygous for the *folk-1* allele. The corresponding segregating individuals homozygous for the *FOLK* WT allele were used as control. Data represent the mean  $\pm$ SD of five biological replicates. No significant differences were observed (Student's *t*-test,  $P > 0.05$ ).



**Fig. 5.** Total fatty acid phytol ester (FAPE) content in *SIVTE5*-RNAi transgenic lines. Data represent the mean  $\pm$ SD of at least three biological replicates. The asterisks denote significant differences between the wild-type (WT) and the transgenic lines (ANOVA/Dunnett's test,  $P < 0.05$ ).



**Fig. 6.** Molecular species composition of fatty acid phytyl esters (FAPEs) in *SIVTE5*-RNAi transgenic lines. FAPEs were measured in leaves (A), mature green (B), and ripe fruits (C). Data represent the mean  $\pm$ SD of at least three biological replicates.

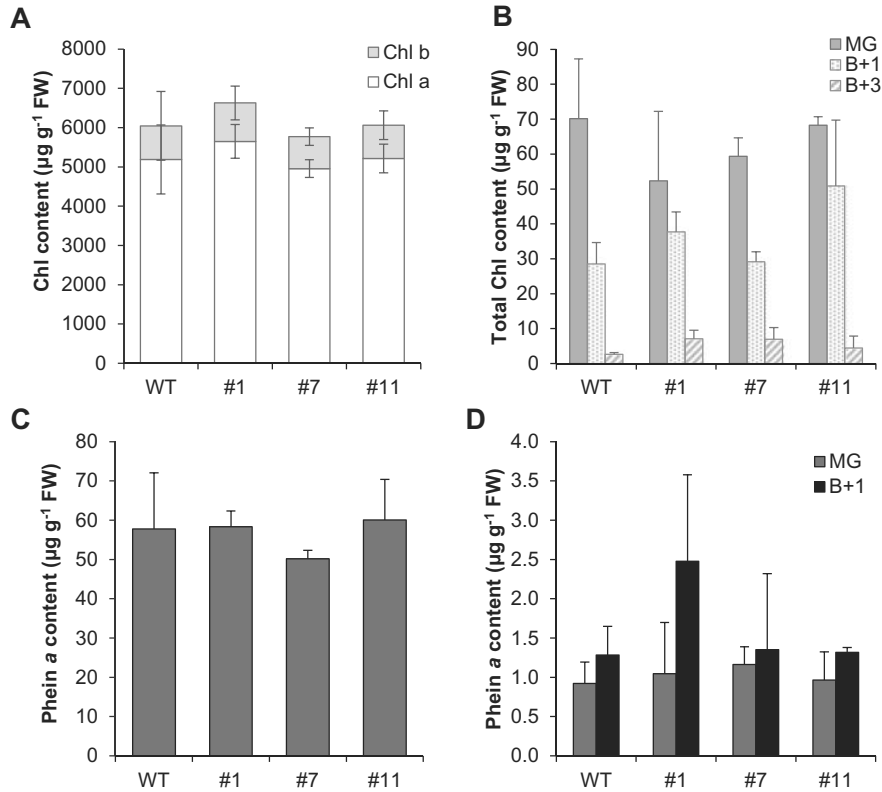
#### *SIVTE5* knockdown alters prenylipid metabolism in fruits

In addition to tocopherols, the plastidial antioxidant network includes a variety of prenylipids derived from the MEP isoprenoid pathway with strong antioxidant properties, such as carotenoids, prenylquinones (PQ-9), and other tocochromanols (e.g. PC-8) (Nowicka *et al.*, 2013). To investigate whether tocopherol deficiency in *SIVTE5*-RNAi lines is compensated by any other non-enzymatic antioxidant mechanism, we performed a comprehensive profiling of prenylipids (Table 1). For determination of prenylquinone and their derivative compounds, a targeted analysis of lipidomic profile obtained by the UHPLC-QTOF MS method was performed, whereas carotenoids were quantified by HPLC. In leaves and ripe fruits of the transgenic plants, depletion of tocopherol was accompanied by a decrease of  $\alpha$ -tocopherolquinone, an oxidized intermediate of the tocopherol redox cycle; yet, the level of this metabolite remained unchanged in mature green fruits.

Remarkably, the levels of the photosynthetic electron carrier phyloquinone (vitamin K), another product of phytyl diphosphate-dependent biosynthesis, did not change between *SIVTE5*-RNAi lines and the wild-type control.

The presence of the reduced and oxidized forms of PQ-9 in wild-type tomato leaves has already been reported (Jones *et al.*, 2013), and our data showed that PC-8 is also detected in *S. lycopersicum*, in both leaves and fruits (see Supplementary Fig. S5 at *JXB* online). PC-8 was less abundant than tocopherols in wild-type tomato leaves, as described for other species (Kruk *et al.*, 2014). In fruits, however, the amount of these tocochromanols was similar (Fig. 2; Supplementary Fig. S5).

The comparison of prenylipid profiles between wild-type and *SIVTE5*-knockdown leaves revealed that PQ-9 forms (PQ-9, PQH<sub>2</sub>-9, and PQ-OH) remained unchanged. In contrast, a reduction to 50% of PC-8 content was observed in *SIVTE5*-RNAi lines, which was accompanied by lower levels of its oxidation product, PC-OH (Table 1). In sharp contrast, the prenylquinone pool of transgenic fruits was significantly



**Fig. 7.** Chlorophyll (Chl) and pheophytin a (Phein a) content in *SIVTE5*-RNAi transgenic lines. (A, C) Quantification of Chl and Phein a in leaves. (B, D) Quantification of Chl and Phein a in fruits at mature green (MG), breaker+1 (B+1), and breaker+3 (B+3) stage. Data represent the mean  $\pm$ SD of at least three biological replicates. No significant differences were observed (ANOVA/Dunnett's test,  $P > 0.05$ ).

increased. PQ-9 levels were >2-fold higher in the *SIVTE5*-RNAi lines, although the levels of the reduced form PQH<sub>2</sub>-9 were unchanged. Intriguingly, the levels of the mitochondrial prenylquinone UQ-10 were also ~2-fold increased in *SIVTE5*-RNAi fruits. In addition, PC-8 accumulated up to 2-fold in both mature green and ripe fruits of the transgenic lines (Table 1). These results suggest that the pool of PQ-9 and PC-8 contributes to fulfilling an antioxidant function in the transgenic fruits.

Carotenoid contents in leaves and mature green fruits remained largely unaltered in the *SIVTE5*-RNAi lines (Table 1). Although no differences in visual appearance were identified (see Supplementary Fig. S3B at *JXB* online), at the ripe stage, silenced fruits exhibited 30% less lycopene than those of wild-type plants, which was also accompanied by an equivalent reduction in levels of lycopene precursors (phytoene, phytofluene, and  $\zeta$ -carotene).

Considering the differences observed in prenyllipid profiles, the total antioxidant capacity of *SIVTE5*-RNAi and wild-type tomato plants was evaluated in non-polar extracts by the TEAC assay. Transgenic ripe fruits showed a reduction in TEAC values in lines #1 and #11 (see Supplementary Fig. S6 at *JXB* online). These results emphasize the role of tocopherol and/or carotenoids in antioxidant protection, since the increase in prenyllipid contents exhibited in the fruits of the *SIVTE5*-RNAi lines did not compensate the TEAC values up to the values observed in wild-type plants.

#### *VTE5* deficiency affects the expression of tocopherol metabolism-related genes

The biochemical profile described above showed that *SIVTE5* knockdown results in an adjustment in prenyllipid and FAPE metabolism in an organ-specific manner. In order to understand whether these changes could be associated with differential gene expression regulation, mRNA levels of genes encoding proteins involved in MEP, shikimate, tocopherol, carotenoid, and Chl metabolism (Quadrana *et al.*, 2013; Lira *et al.*, 2014; Almeida *et al.*, 2015), as well as in prenylquinone and FAPE synthesis were measured by qPCR (Fig. 1). Genes that showed significantly different mRNA levels in at least two transgenic *SIVTE5*-RNAi lines and, when applicable, the third followed the same trend are shown in Fig. 8. The complete set of data is shown in Supplementary Table S4 at *JXB* online.

Genes of tocopherol biosynthesis did not exhibit a consistent expression tendency in leaves of *SIVTE5*-RNAi lines. In fruit, the elevated expression of *HPPD(1)* and *HPPD(2)* is consistent with the increased prenylquinone content in silenced plants. Moreover, in transgenic ripe fruit, *VTE3(1)* up-regulation also coincided with the higher content of PC-8 and PQ-9. Intriguingly, the expression of the gene encoding the solanesyl diphosphate synthase (SPS), which catalyzes the production of the PQ-9 or PC-8 prenyl side chain, was decreased in transgenic mature green fruits, suggesting a negative feedback regulatory mechanism.

**Table 1.** Changes in prenylipid contents in leaves and fruits of *SIVTE5-RNAi* transgenic lines compared with the wild-type

Data were normalized to sample DW and expressed relative to the wild-type (WT) in each tissue.

Prenylipids (relative amounts)	WT	<i>SIVTE5-RNAi</i>		
		#1	#7	#11
Leaf				
α-TQ	1.00±0.18	<b>0.23±0.03</b>	<b>0.22±0.08</b>	<b>0.24±0.01</b>
PC-8	1.00±0.30	<b>0.52±0.19</b>	<b>0.54±0.19</b>	<b>0.36±0.07</b>
PQ-9	1.00±0.18	0.83±0.15	0.87±0.20	<b>0.63±0.12</b>
PQH <sub>2</sub> -9	1.00±0.66	1.27±0.59	1.02±0.43	0.86±0.37
PC-OH	1.00±0.21	<b>0.65±0.18</b>	0.72±0.24	<b>0.51±0.11</b>
PQ-OH	1.00±0.20	1.01±0.26	1.04±0.27	0.70±0.19
UQ-10	1.00±0.24	0.83±0.23	0.81±0.12	0.81±0.10
Phylloquinone	1.00±0.16	0.87±0.12	0.84±0.12	0.81±0.12
β-Carotene	1.00±0.07	0.89±0.04	0.91±0.02	0.91±0.07
Lutein	1.00±0.07	0.97±0.06	0.96±0.03	0.95±0.03
Violaxanthin/neoxanthin	1.00±0.06	0.97±0.06	1.00±0.02	0.99±0.06
Mature green fruit				
α-TQ	1.00±0.15	1.11±0.48	1.20±0.47	1.13±0.10
PC-8	1.00±0.15	<b>1.89±0.26</b>	<b>1.78±0.05</b>	<b>1.88±0.19</b>
PQ-9	1.00±0.15	<b>2.11±0.46</b>	<b>2.22±0.42</b>	<b>2.22±0.26</b>
PQH <sub>2</sub> -9	1.00±0.30	0.77±0.23	1.24±0.36	1.16±0.36
PC-OH	1.00±0.42	0.89±0.34	1.10±0.30	1.02±0.29
PQ-OH	1.00±0.26	1.31±0.49	<b>1.74±0.47</b>	1.52±0.32
UQ-10	1.00±0.13	<b>2.13±0.24</b>	<b>1.76±0.28</b>	<b>1.93±0.34</b>
Phylloquinone	1.00±0.27	1.23±0.18	1.25±0.32	1.32±0.16
β-Carotene	1.00±0.22	0.96±0.16	0.92±0.15	1.00±0.16
Lutein	1.00±0.22	0.98±0.10	1.09±0.11	<b>1.31±0.15</b>
Violaxanthin/neoxanthin	1.00±0.34	0.85±0.16	0.85±0.07	1.28±0.20
Ripe fruit				
α-TQ	1.00±0.25	<b>0.54±0.04</b>	<b>0.64±0.17</b>	<b>0.64±0.15</b>
PC-8	1.00±0.15	<b>2.29±0.34</b>	<b>1.67±0.20</b>	<b>2.07±0.50</b>
PQ-9	1.00±0.17	<b>2.40±0.54</b>	<b>2.24±0.20</b>	<b>1.76±0.26</b>
PQH <sub>2</sub> -9	1.00±0.29	1.55±0.39	1.77±0.55	1.92±1.06
PC-OH	1.00±0.27	1.26±0.51	1.35±0.46	0.99±0.42
PQ-OH	1.00±0.07	2.27±1.03	2.24±0.80	2.10±0.94
UQ-10	1.00±0.14	<b>2.40±0.38</b>	<b>1.96±0.53</b>	<b>2.13±0.24</b>
Phylloquinone	1.00±0.18	1.11±0.18	1.32±0.50	1.41±0.50
Phytoene	1.00±0.09	<b>0.68±0.11</b>	<b>0.72±0.19</b>	<b>0.62±0.10</b>
Phytofluene	1.00±0.14	<b>0.72±0.13</b>	<b>0.66±0.14</b>	<b>0.64±0.08</b>
Neurosporene	1.00±0.22	0.73±0.24	0.97±0.18	<b>0.60±0.20</b>
ζ-Carotene	1.00±0.20	<b>0.44±0.17</b>	<b>0.33±0.19</b>	<b>0.39±0.18</b>
Lycopene	1.00±0.06	<b>0.78±0.14</b>	<b>0.70±0.08</b>	<b>0.74±0.13</b>
β-Carotene	1.00±0.06	0.87±0.20	0.86±0.16	0.90±0.14
Lutein	1.00±0.13	1.07±0.13	1.02±0.09	1.19±0.25

Values are represented as means ±SD. Terms in bold indicate a statistically significant difference by ANOVA/Dunnnett's test ( $P < 0.05$ ). α-TQ, α-tocopherolquinone; PQ-9, plastoquinone-9; PQH<sub>2</sub>-9, plastoquinol-9; PQ-OH, hydroxy-plastoquinone; PC-8, plastochromanol-8; PC-OH, hydroxy-plastochromanol; UQ-10, ubiquinone-10.

In leaves, an apparent reduction in the Chl degradation pathway was observed in *SIVTE5-RNAi* lines, as indicated by a down-regulation of *STAY-GREEN1* (*SGRI*) and *PHEOPHORBIDE A OXYGENASE* (*PAO*) expression. Although Chl contents remained invariant, the observed transcriptional down-regulation may reflect a response

to phytol accumulation. This scenario contrasts with that observed in fruits where *SGRI* was up-regulated in transgenic plants compared with the wild-type. Additionally, ripe fruit of *SIVTE5-RNAi* lines showed higher mRNA levels of *PHEOPHYTINASE* (*PPH*).

Regarding carotenoid biosynthesis, only certain genes showed significant changes in their mRNA levels in leaves and mature green fruits of the *SIVTE5-RNAi* lines, although the biochemical profiles of these compounds remained unaltered when compared with the wild-type. In contrast, in ripe fruits, the increased levels of *CHROMOPLAST-SPECIFIC β-LYCOPENE CYCLASE* (*CYC-β*) transcripts could account for the reduction in lycopene and its immediate precursors verified in the transgenic lines.

Finally, the *PALE YELLOW PETAL 1* (*PYP1*) gene, the ortholog of Arabidopsis *PHYTYL ESTER SYNTHASE1* (*PES1*) (Ariizumi *et al.*, 2014), showed increased levels of transcripts in the leaves of the *SIVTE5-RNAi* lines, in agreement with the higher FAPE contents observed in these organs. Thus, the analysis of transcriptional profiles reinforces the specific regulation occurring in leaves and fruits.

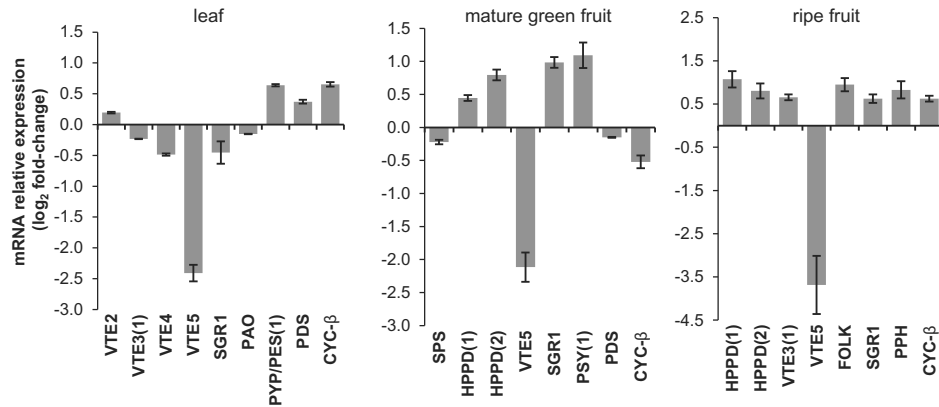
#### Measurements of carbohydrate metabolism, photosynthesis, and yield parameters suggest carbon export impairment in *SIVTE5*-knockdown plants

To evaluate whether the observed tocopherol deficiency in *SIVTE5-RNAi* lines affects carbon fixation and partitioning, the starch and soluble sugar content, photosynthetic performance, and yield parameters were assessed. Leaves of 5-week-old transgenic plants showed up to a 4.5-fold increase in starch content accompanied by a 20% decrease in sucrose levels compared with the wild-type control in the middle of the light period (Fig. 9). Concomitantly, the carbon assimilation rates were reduced in *SIVTE5-RNAi* lines, while the efficiency of PSII activity ( $\Phi_{PSII}$ ) displayed moderate reduction (Fig. 10). The chloroplast ultrastructure was mostly preserved in *SIVTE5*-knockdown plants (see Supplementary Fig. S7 at *JXB* online).

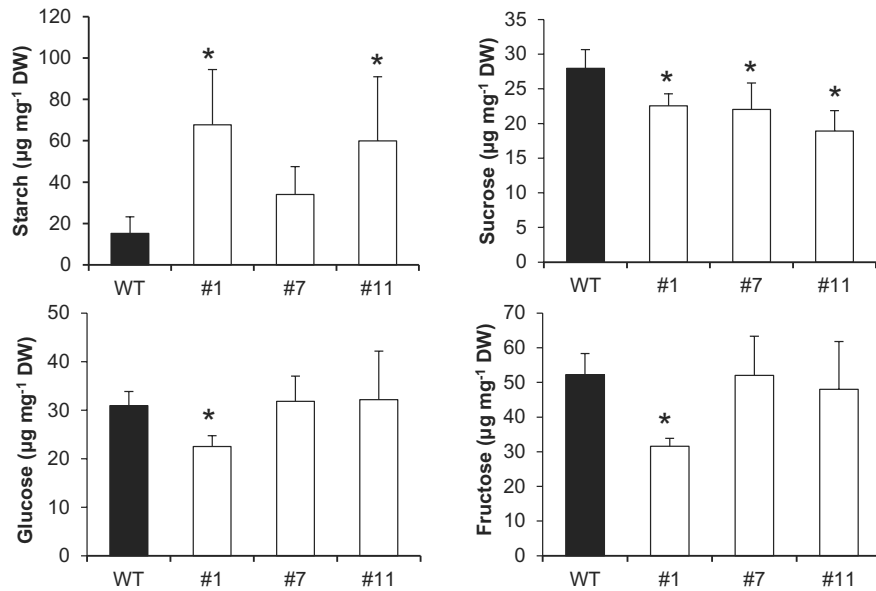
In agreement with carotenoid profiling and the gene expression pattern, transgenic plants displayed a delay in fruit development and ripening as indicated by the frequency of red and green fruits, as well as the red fruit yield compared with the control genotype at harvest time (Table 2). Moreover, they displayed a yield penalty evidenced by a modest reduction in the harvest index. These results suggest that efficiency in photosynthate partitioning is compromised by the tocopherol deficiency in transgenic lines.

## Discussion

Several reports have dissected tocopherol biosynthesis, identified quantitative trait loci (QTLs) that determine VTE accumulation, and characterized regulatory mechanisms that control the tocopherol biosynthetic pathway (Almeida *et al.*, 2011; DellaPenna and Mène-Saffrané, 2011; Martinis *et al.*, 2013, 2014; Quadrana *et al.*, 2013, 2014; Zhang *et al.*,



**Fig. 8.** Changes in gene expression levels of some key isoprenoid metabolism-related genes resulting from *SIVTE5* down-regulation in both leaves and fruits. The amount of mRNA of the enzyme-encoding genes shown in Fig. 1 was quantified. Expression data are means  $\pm$ SEM of three biological replicates of log<sub>2</sub>-fold changes compared with the corresponding organ of the wild-type control. Only genes that showed significantly different mRNA levels in *SIVTE5*-knockdown lines are shown (permutation test,  $P < 0.05$ ). For simplicity, solely data from *SIVTE5*-RNAi#7 are represented. The complete data set is available in Supplementary Table S4 at JXB online.



**Fig. 9.** Starch and soluble sugar levels in source leaves in *SIVTE5*-RNAi transgenic lines. The first fully expanded leaves were harvested from 5-week-old plants in the middle of the light cycle. Starch is given in  $\mu\text{g}$  glucose equivalents. Data are means  $\pm$ SD of five biological replicates. The asterisks denote significant differences between the wild-type (WT) and the transgenic lines (ANOVA/Dunnett's test,  $P < 0.05$ ).

2013; Zhang *et al.*, 2014). One well-defined metabolic constraint is the availability of phytyl diphosphate precursor for tocopherol biosynthesis, which can be derived from *de novo* biosynthesis via the MEP pathway and from Chl phytol tail recycling (Ischebeck *et al.*, 2006; Quadrana *et al.*, 2013; Zhang *et al.*, 2013). The phytol hydrolysis of Chl is the primary source of prenyl chain for tocopherol biosynthesis in Arabidopsis seeds (Valentin *et al.*, 2006). However, functional analysis of the phytol salvage pathway has been limited to this species. In this study, we investigated the contribution of VTE5-mediated phytyl diphosphate synthesis for tocopherol production and its impact on plant physiology in tomato. The comprehensive metabolite profiling, expression analyses, and evaluation of photosynthetic parameters performed in tomato *SIVTE5*-knockdown plants allowed us to gain insights into the interactions between phytol recycling, and

lipid and carbon metabolism, exposing distinct metabolic adjustment in source and sink organs.

Even with an active *de novo* synthesis of phytyl diphosphate, down-regulation of *SIVTE5* dramatically reduces tocopherol content in leaves and fruits in comparison with the wild-type genotype. These data demonstrated that in tomato, tocopherol production is mostly dependent on the Chl-linked pathway for phytyl diphosphate synthesis in both vegetative and reproductive organs. Furthermore, these findings suggest that *SIVTE5* is the main—if not the sole—contributor to VTE5 activity. The analysis of the tomato *folk-1* mutant suggested that *SIFOLK* is not involved in reactivation of free phytol.

Coincident with *SIVTE5* down-regulation, free phytol, the substrate of the phytol kinase reaction, accumulates in leaves of transgenic lines. Interestingly, the amount of free phytol accumulated corresponds to the decrease in

**Table 2.** Yield-associated traits of *SIVTE5-RNAi* transgenic lines

Trait	WT	<i>SIVTE5-RNAi</i>		
		#1	#7	#11
Number of total fruits	36.2±5.8	37.4±4.7	40.8±4.3	35.8±1.5
Frequency red fruits (%)	63.9±6.9	<b>49.6±7.8</b>	54.0±11.5	53.3±8.8
Frequency green fruits (%)	37.3±6.9	<b>50.4±7.8</b>	46.0±11.5	46.7±8.8
Vegetative plant weight (g FW)	30.0±8.3	34.3±8.0	39.4±6.9	34.0±7.3
Total yield per plant (g FW)	114.4±17.2	115.9±11.3	125.9±28.8	101.6±16.9
Harvest index	0.79±0.02	0.77±0.04	<b>0.76±0.02</b>	<b>0.75±0.03</b>
Red yield/aerial biomass ratio	0.57±0.08	<b>0.47±0.11</b>	<b>0.50±0.09</b>	0.52±0.15

Vegetative plant weight was determined by weighing only the vegetative tissue (after harvesting the fruits) without the root. Harvest index was calculated as the ratio between total fresh yield per plant (red and green fruit mass) and aerial biomass (total yield+vegetative plant weight).

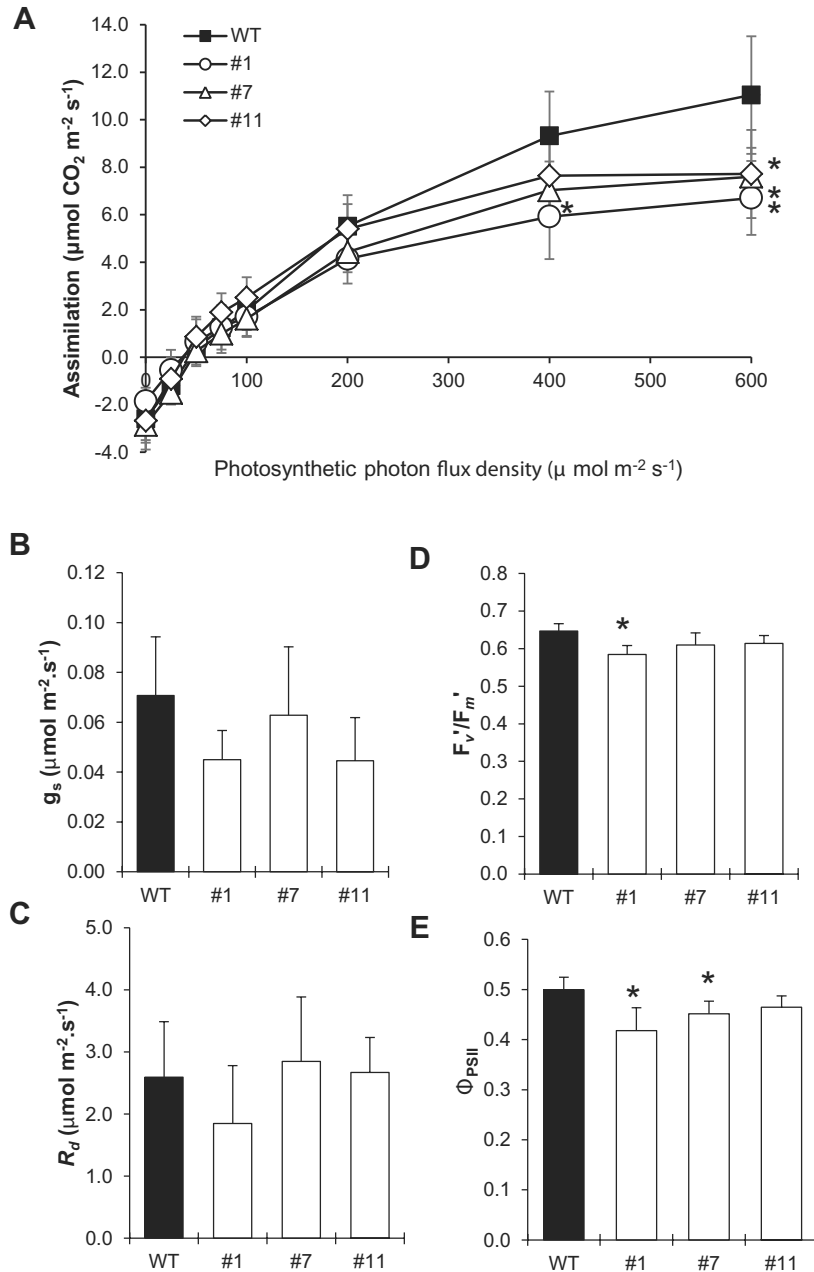
Values indicate the mean ±SD of phenotypic values ( $n=5$ ) determined for 15-week-old plants. Statistically significant differences between the wild-type (WT) control and transgenic lines are indicated in bold (Student's *t*-test,  $P<0.05$ ).

tocopherol content, suggesting that a large proportion of phytol diphosphate derived from the phytol phosphorylation pathway is used for tocopherol biosynthesis in tomato. Furthermore, FAPes are strongly increased in the mature leaves of *SIVTE5-RNAi* lines, although the Chl levels remain unchanged. FAPes are plastoglobule compounds that represent a class of stress-induced lipids in higher plants, which may act as plastidial transient sinks for the deposition of fatty acids and phytol (Gaude *et al.*, 2007). Since the phytol moiety of FAPes is mostly derived from Chl degradation (Lippold *et al.*, 2012), our findings raise an intriguing issue concerning the origin of the phytol that sustains FAPE synthesis in *SIVTE5*-knockdown plants. One possible explanation may be that perturbations in phytol metabolism caused by the lack of VTE5 activity promote an increase in Chl turnover in transgenic lines. In leaves, the increased steady-state phytol levels were channeled to FAPE synthesis, while in fruits phytol remained as the free form. Alternatively, the origin of FAPE-associated phytol might be explained by the impairment in catabolism, which in plants involves the production of phytenoyl-CoA in chloroplasts that is further degraded by  $\alpha$ -oxidation in peroxisomes and mitochondria, similar to that described in animals (Araújo *et al.*, 2011). Notably, levels of phylloquinone, another phytyl diphosphate chain-containing molecule, were unchanged in both leaves and fruits, indicating that the VTE5-dependent phytol pathway does not affect vitamin K synthesis in tomato. This result coincides with the previous observation of feeding experiments of *Arabidopsis* seedlings with radiolabeled phytol (Ischebeck *et al.*, 2006).

Even under permissive growing conditions, VTE5-tocopherol deficiency not only impacts the lipid profile but also carbon metabolism and photosynthesis, having consequences on the tomato plant physiology. *SIVTE5-RNAi* lines showed higher starch accumulation in mature leaves that

correlated with a lower CO<sub>2</sub> assimilation rate and the reduction in PSII operating efficiency. This scenario suggests carbohydrate-mediated feedback inhibition rather than a direct impact of tocopherol deficiency on photosynthetic capacity (Adams *et al.*, 2013; Asensi-Fabado *et al.*, 2014). Moreover, a subtle reduction in the number of harvestable fruits and the harvest index was observed. These results could be indicative of sugar export blockage from leaves towards sink organs in *SIVTE5*-knockdown tomato plants. Photoassimilate export impairment mediated by tocopherol deficiency has been reported in the literature, such as in potato *VTE1-RNAi* lines (Hofius *et al.*, 2004; Asensi-Fabado *et al.*, 2014) and *vt2 A. thaliana* during low-temperature adaptation (Maeda *et al.*, 2006, 2008), where carbon accumulation was verified in source leaves at the end of the light period. How tocopherol influences photoassimilate partitioning has not been precisely addressed yet. However, Song *et al.* (2010) provided robust genetic evidence that alterations in extra-plastidic lipid metabolism are upstream of the defect in photoassimilate export in VTE-deficient plants, which is mediated by fatty acid desaturases (FADs). In particular, it was reported that VTE depletion led to increased linoleic acid (18:2) content and a reduced level of linolenic acid (18:3). Consistent with this, one of the acyl groups that mostly contribute to the increase in the total FAPes in the chloroplasts of the *SIVTE5-RNAi* lines was 18:2. Additionally, our lipidomic data revealed that the plastidial digalactosyldiacylglycerol (DGDG), which mainly consists of pairs including 18:3 species, was reduced in leaves of *SIVTE5-RNAi* lines compared with the wild-type (see Supplementary Table S5 at *JXB* online), resembling the lipid alterations previously reported (Maeda *et al.*, 2006, 2008). It has been proposed that changes in membrane lipid composition as a result of tocopherol deficiency might affect the properties of the secretory membrane systems (Maeda *et al.*, 2008, 2014). Since tomato has been described as an apoplastic phloem loader (Muller *et al.*, 2014), we could speculate that the alteration of endomembrane vesicle formation affects the sucrose efflux mediated by SWEET proteins, which have been described as key players in phloem transport (Chen *et al.*, 2012; McCurdy and Hueros, 2014). Alternatively, the carbon export impairment observed in *SIVTE5*-knockdown tomato plants could be the result of the interaction between lipid and sugar metabolism by an as yet unidentified mechanism probably involving sugar sensing proteins, as proposed by Asensi-Fabado *et al.* (2014).

VTE5 deficiency triggered different metabolic responses in fruits compared with those described for leaves, reflecting the intrinsic physiological differences between organs and their corresponding plastids. First, fruits of *SIVTE5*-knockdown plants accumulated phytol in the free form rather than channeled into synthesis of FAPes. This might be explained by the lowered availability of acyl donors inherent to fruit-specific lipid metabolism (Dominguez *et al.*, 2010). Secondly, the observation that the non-tocopherol prenylquinone pool, including PQ-9 and PC-8, is increased in fruits of *SIVTE5*-knockdown plants suggests that a regulatory compensation mechanism between the tocopherol and prenylquinone pathways exists in this organ. The ability of plastoquinol (PQH<sub>2</sub>-9), ubiquinol



**Fig. 10.** Gas-exchange and PSII efficiency parameters in *SIVTE5*-RNAi transgenic lines. (A) The response of carbon assimilation (A) to light intensity. (B) Leaf stomatal conductance ( $g_s$ ). (C) Leaf dark respiration ( $R_d$ ). (D) Light-adapted PSII maximum quantum efficiency ( $F_v'/F_m'$ ). (E) PSII operating efficiency ( $\Phi_{\text{PSII}}$ ). Data correspond to measurements in the first fully expanded leaf of 5-week-old plants and represent the means  $\pm$ SD of five biological replicates. The asterisks denote significant differences between the wild-type (WT) and the transgenic lines (ANOVA/Dunnett's test,  $P < 0.05$ ).

(UQH<sub>2</sub>-10), the reduced forms of PQ-9 and UQ-10, respectively, and PC-8 to scavenge ROS and inhibit lipid peroxidation has been demonstrated before (Kruk and Trebst, 2008; Nowicka *et al.*, 2013; Rastogi *et al.*, 2014). Moreover, PQ-9 and PC-8 have already been associated with inhibition of lipid peroxidation and <sup>1</sup>O<sub>2</sub> scavenging in *VTE*-deficient *Arabidopsis vte2* mutants (Mène-Saffrané *et al.*, 2010). Likewise, in tomato leaves, the reduction of PQ-9 content by the virus-induced gene silencing approach resulted in increased tocopherol and UQ-10 levels (Jones *et al.*, 2013). Interestingly, the favorable biochemical environment for the accumulation of PQ-9 and PC-8 is supported not only by reduced flux through the

tocopherol competing pathway but also by the *HPPD* and *VTE3* up-regulation in this organ. Finally, *SIVTE5*-RNAi ripe fruits exhibited perturbations in the carotenoid pathway. The reduced amount of lycopene and its biosynthetic precursors can be explained by the higher transcript levels of *SGR1* found at the mature green and ripe stages. Besides having an important role in the regulation of plant Chl degradation and senescence (Hörtensteiner, 2009), *SGR1* also regulates lycopene and  $\beta$ -carotene biosynthesis by direct interaction with *PSY(1)*, thereby inhibiting its activity (Luo *et al.*, 2013). Simultaneously, the failure of co-ordinate transcriptional repression of the *CYC- $\beta$*  gene in *SIVTE5*-knockdown

ripe fruits could also account for the reduced abundance of acyclic carotenoids. The amounts of  $\beta$ -carotene and lutein in transgenic fruits were similar to those in the wild-type at the expense of the preceding carotenoids. Additionally, it has been demonstrated that the level of *PPH* transcripts decreases during tomato fruit ripening (Lira *et al.*, 2014); however, *SIVTE5*-RNAi ripe fruits displayed higher levels of *PPH* transcripts than the wild-type. Thus, the comprehensive analysis of the biochemical and transcriptional data together with the results of the yield experiment indicates that the ripe profiled transgenic fruits are indeed less ripe than wild-type fruits. The reduction in carbohydrate export described above might be in part responsible for the delay in fruit development and ripening, resulting in a reduced proportion of mature fruits at harvest time in *SIVTE5*-knockdown plants.

The results presented here clearly show that in tomato VTE biosynthesis is largely dependent on the salvage pathway for phytyl diphosphate synthesis rather than the *de novo* synthesis from the MEP pathway in both leaves and fruits. VTE5 deficiency affected lipid metabolism, evidenced by the abundance and composition of FAPes in leaves and prenylquinones in fruits. Together, these results exposed the complexities of the metabolic regulation that emerge from the isoprenoid pathway network, which involves a tight control between precursor supply and utilization highly dependent on the plastid type. Moreover, our data highlighted the cross-talk between lipid and carbon metabolism mediated by tocopherol that resulted in the impairment of carbon export in *SIVTE5*-knockdown tomato plants compromising fruit development and ripening.

## Supplementary data

Supplementary data are available at *JXB* online.

Table S1. Primers used for each experiment.

Table S2. Tocopherol content and composition of *SIVTE5*-RNAi transgenic lines and the *folk-1* mutant.

Table S3. Moles of prenylipids found in *SIVTE5*-RNAi transgenic lines.

Table S4. Transcriptional profile of genes encoding isoprenoid metabolism-related enzymes.

Table S5. Changes in fatty acid-derived lipids in leaves of *SIVTE5*-RNAi transgenic lines compared with the wild-type.

Fig. S1. Phylogenetic analysis of VTE5 and FOLK proteins.

Fig. S2. Expression of *SIVTE5* and *SIFOLK*.

Fig. S3. Fruit phenotype of *SIVTE5*-RNAi transgenic lines.

Fig. S4. Analysis of the *folk-1* mutation.

Fig. S5. Plastoquinone (PQ-9) and plastochromanol (PC-8) levels in *SIVTE5*-RNAi transgenic lines.

Fig. S6. Trolox equivalent antioxidant capacity (TEAC) in leaves and fruits of *SIVTE5*-RNAi transgenic lines.

Fig. S7. Chloroplast ultrastructure resulting from *SIVTE5* down-regulation.

## Acknowledgements

This work was supported by grants from FAPESP (Brazil), CNPq (Brazil), the European Union (European Solanaceae Integrated Project

FOOD-CT-2006-016214), and Swiss National Science Foundation grants 31003A\_127380, 31003A\_144156, and IZEBZO-143169/1.

## References

- Abbasi AR, Hajirezaei M, Hofius D, Sonnewald U, Voll LM.** 2007. Specific roles of  $\alpha$ - and  $\gamma$ -tocopherol in abiotic stress responses of transgenic tobacco. *Plant Physiology* **143**, 1720–1738.
- Adams WW, Muller O, Cohu CM, Demmig-Adams B.** 2013. May photoinhibition be a consequence, rather than a cause, of limited plant productivity? *Photosynthesis Research* **117**, 31–44.
- Almeida J, Asis R, Molineri VN, Sestari I, Lira BS, Carrari F, Peres LE, Rossi M.** 2015. Fruits from ripening impaired, chlorophyll degraded and jasmonate insensitive tomato mutants have altered tocopherol content and composition. *Phytochemistry* **111**, 72–83.
- Almeida J, Quadrana L, Asis R, et al.** 2011. Genetic dissection of vitamin E biosynthesis in tomato. *Journal of Experimental Botany* **62**, 3781–3798.
- Amaral LIV, Gaspar M, Costa PF, Aidar MPM, Buckeridge MS.** 2008. Novo método enzimático rápido e sensível de extração e dosagem de amido em materiais vegetais. *Hoehnea* **34**, 425–431.
- Araújo WL, Ishizaki K, Nunes-Nesi A, et al.** 2011. Analysis of a range of catabolic mutants provides evidence that phytanoyl-coenzyme A does not act as a substrate of the electron-transfer flavoprotein/electron-transfer flavoprotein, ubiquinone oxidoreductase complex in Arabidopsis during dark-induced senescence. *Plant Physiology* **157**, 55–69.
- Arizumi T, Kishimoto S, Kakami R, et al.** 2014. Identification of the carotenoid modifying gene PALE YELLOW PETAL 1 as an essential factor in xanthophyll esterification and yellow flower pigmentation in tomato (*Solanum lycopersicum*). *The Plant Journal* **79**, 453–465.
- Asensi-Fabado MA, Ammon A, Sonnewald U, Munné-Bosch S, Voll LM.** 2014. Tocopherol deficiency reduces sucrose export from salt-stressed potato leaves independently of oxidative stress and symplastic obstruction by callose. *Journal of Experimental Botany* **66**, 957–971.
- Botella-Pavía P, Besumbes O, Phillips MA, Carretero-Paulet L, Boronat A, Rodriguez-Concepcion M.** 2004. Regulation of carotenoid biosynthesis in plants, evidence for a key role of hydroxymethylbutenyl diphosphate reductase in controlling the supply of plastidial isoprenoid precursors. *The Plant Journal* **40**, 188–199.
- Chen LQ, Qu XQ, Hou BH, Sosso D, Osorio S, Fernie AR, Frommer WB.** 2012. Sucrose efflux mediated by SWEET proteins as a key step for phloem transport. *Science* **335**, 207–211.
- Chun J, Lee J, Ye L, Exler J, Eitenmiller RR.** 2006. Tocopherol and tocotrienol contents of raw and processed fruits and vegetables in the United States diet. *Journal of Food Composition and Analysis* **19**, 196–204.
- DellaPenna D, Mène-Saffrané L.** 2011. Vitamin E. *Advances in Botanical Research* **59**, 179–227.
- DellaPenna D, Pogson BJ.** 2006. Vitamin synthesis in plants: tocopherols and carotenoids. *Annual Review of Plant Biology* **57**, 711–738.
- Demmig-Adams B, Stewart JJ, Adams WW.** 2014. Multiple feedbacks between chloroplast and whole plant in the context of plant adaptation and acclimation to the environment. *Philosophical Transactions of the Royal Society B: Biological Sciences* **369**, 20130244.
- De Souza AP, Arundale RA, Dohleman FG, Long SP, Buckeridge MS.** 2013. Will the exceptional productivity of *Miscanthus x giganteus* increase further under rising atmospheric CO<sub>2</sub>? *Agricultural and Forest Meteorology* **171–172**, 82–92.
- Di Mascio P, Devasagayam TP, Kaiser S, Sies H.** 1990. Carotenoids, tocopherols and thiols as biological singlet molecular oxygen quenchers. *Biochemical Society Transactions* **18**, 1054–1056.
- Di Rienzo JA.** 2009. Statistical software for the analysis of experiments of functional genomics. RDNDA, Argentina. <http://sites.google.com/site/fgStatistics/>.
- Domínguez T, Hernández ML, Pennycooke JC, Jiménez P, Martínez-Rivas JM, Sanz C, Stockinger EJ, Sánchez-Serrano JJ, Sanmartín M.** 2010. Increasing  $\omega$ -3 desaturase expression in tomato results in altered aroma profile and enhanced resistance to cold stress. *Plant Physiology* **153**, 655–665.

- Edreva A.** 2005. Generation and scavenging of reactive oxygen species in chloroplasts, a submolecular approach. *Agriculture, Ecosystems and Environment* **106**, 119–133.
- Eugeni-Piller L, Glauser G, Kessler F, Besagni C.** 2014. Role of plastoglobules in metabolite repair in the tocopherol redox cycle. *Frontiers in Plant Science* **5**, 298.
- Filichkin S, Priest HD, Megraw M, Mockler TC.** 2015. Alternative splicing in plants: directing traffic at the crossroads of adaptation and environmental stress. *Current Opinion in Plant Biology* **24**, 125–135.
- Fitzpatrick AH, Bhandari J, Crowell DN.** 2011. Farnesol kinase is involved in farnesol metabolism, ABA signaling and flower development in *Arabidopsis*. *The Plant Journal* **66**, 1078–1088.
- Fitzpatrick TB, Basset GJC, Borel P, et al.** 2012. Vitamin deficiencies in humans: can plant science help? *The Plant Cell* **24**, 395–414.
- Foyer CH, Noctor G.** 2005. Redox homeostasis and antioxidant signaling: a metabolic interface between stress perception and physiological responses. *The Plant Cell* **17**, 1866–1875.
- Fukuzawa K, Matsuura K, Tokumura A, Suzuki A, Terao J.** 1997. Kinetics and dynamics of singlet oxygen scavenging by alpha-tocopherol in phospholipid model membranes. *Free Radical Biology and Medicine* **22**, 923–930.
- Gaude N, Bréhélin C, Tischendorf G, Kessler F, Dörmann P.** 2007. Nitrogen deficiency in *Arabidopsis* affects galactolipid composition and gene expression and results in accumulation of fatty acid phytyl esters. *The Plant Journal* **49**, 729–739.
- Genty B, Briantais JM, Baker NR.** 1989. The relationship between quantum yield of photosynthetic electron transport and quenching of chlorophyll fluorescence. *Biochimica et Biophysica Acta* **990**, 87–92.
- Grusak MA, DellaPenna D.** 1999. Improving the nutrient composition of plants to enhance human nutrition and health. *Annual Review of Plant Physiology and Plant Molecular Biology* **50**, 133–161.
- Gupta P, Sreelakshmi Y, Sharma R.** 2015. A rapid and sensitive method for determination of carotenoids in plant tissues by high performance liquid chromatography. *Plant Methods* **11**, 5.
- Havaux M, Eymery F, Porfirova S, Rey P, Dörmann P.** 2005. Vitamin E protects against photoinhibition and photooxidative stress in *Arabidopsis thaliana*. *The Plant Cell* **17**, 3451–3469.
- Hofius D, Hajirezaei MR, Geiger M, Tschiersch H, Melzer M, Sonnewald U.** 2004. RNAi-mediated tocopherol deficiency impairs photoassimilate export in transgenic potato plants. *Plant Physiology* **135**, 1256–1268.
- Hörtensteiner S.** 2009. Stay-green regulates chlorophyll and chlorophyll-binding protein degradation during senescence. *Trends in Plant Sciences* **14**, 155–162.
- Ischebeck T, Zbierzak AM, Kanwischer M, Dörmann P.** 2006. A salvage pathway for phytol metabolism in *Arabidopsis*. *Journal of Biological Chemistry* **281**, 2470–2477.
- Jones MO, Perez-Fons L, Robertson FP, Bramley PM, Fraser PD.** 2013. Functional characterization of long-chain prenilyl diphosphate synthases from tomato. *Biochemical Journal* **449**, 729–740.
- Just D, Garcia V, Fernandez L, et al.** 2013. Micro-Tom mutants for functional analysis of target genes and discovery of new alleles in tomato. *Plant Biotechnology* **30**, 225–231.
- Kaiser S, Di Mascio P, Murphy ME, Sies H.** 1990. Physical and chemical scavenging of singlet molecular oxygen by tocopherols. *Archives of Biochemistry and Biophysics* **277**, 101–108.
- Kamal-Eldin A, Appelqvist LA.** 1996. The chemistry and antioxidant properties of tocopherols and tocotrienols. *Lipids* **31**, 671–701.
- Karimi M, Inzé D, Depicker A.** 2002. GATEWAY vectors for Agrobacterium-mediated plant transformation. *Trends in Plant Science* **7**, 193–195.
- Kruk J, Szymańska R, Cela J, Munné-Bosch S.** 2014. Plastochromanol-8: fifty years of research. *Phytochemistry* **108**, 9–16.
- Kruk J, Trebst A.** 2008. Plastoquinol as a singlet oxygen scavenger in photosystem II. *Biochimica et Biophysica Acta* **1777**, 154–162.
- Langmeier M, Ginsburg S, Matile P.** 1993. Chlorophyll breakdown in senescent leaves: demonstration of Mg-dechelataase activity. *Physiologia Plantarum* **89**, 347–353.
- Lippold F, vom Dorp K, Abraham M, et al.** 2012. Fatty acid phytyl ester synthesis in chloroplasts of *Arabidopsis*. *The Plant Cell* **24**, 2001–2014.
- Lira B, Setta N, Rosado D, Almeida J, Freschi L, Rossi M.** 2014. Plant degreening: evolution and expression of tomato (*Solanum lycopersicum*) dephytylation enzymes. *Gene* **546**, 359–366.
- Loyola J, Verdugo I, González E, Casaretto JA, Ruiz-Lara S.** 2012. Plastidic isoprenoid biosynthesis in tomato: physiological and molecular analysis in genotypes resistant and sensitive to drought stress. *Plant Biology* **14**, 149–156.
- Luo Z, Zhang J, Li J, Yang C, Wang T, Ouyang B, Li H, Giovannoni J, Ye Z.** 2013. A STAY-GREEN protein SISGR1 regulates lycopene and  $\beta$ -carotene accumulation by interacting directly with SIPSY1 during ripening processes in tomato. *New Phytologist* **198**, 442–452.
- Maeda H, Sage TL, Isaac G, Welti R, DellaPenna D.** 2008. Tocopherols modulate extraplastidic polyunsaturated fatty acid metabolism in *Arabidopsis* at low temperature. *The Plant Cell* **20**, 452–470.
- Maeda H, Song W, Sage TL, DellaPenna D.** 2006. Tocopherols play a crucial role in low-temperature adaptation and phloem loading in *Arabidopsis*. *The Plant Cell* **18**, 2710–2732.
- Maeda H, Song W, Sage T, DellaPenna D.** 2014. Role of callose synthases in transfer cell wall development in tocopherol deficient mutants. *Frontiers in Plant Science* **5**, 46.
- Martinis J, Glauser G, Valimareanu S, Kessler F.** 2013. A chloroplast ABC1-like kinase regulates vitamin E metabolism in *Arabidopsis thaliana*. *Plant Physiology* **162**, 652–662.
- Martinis J, Glauser G, Valimareanu S, Stettler M, Zeeman S, Yamamoto H, Shikanai T, Kessler F.** 2014. ABC1K1/PGR6 kinase: a regulatory link between photosynthetic activity and chloroplast metabolism. *The Plant Journal* **77**, 268–283.
- McCurdy DW, Hueros G.** 2014. Transfer cells. *Frontiers in Plant Science* **5**, 672.
- Mène-Saffrané L, Jones AD, DellaPenna D.** 2010. Plastochromanol-8 and tocopherols are essential lipid-soluble antioxidants during seed desiccation and quiescence in *Arabidopsis*. *Proceedings of the National Academy of Sciences, USA* **107**, 17815–17820.
- Miret JA, Munné-Bosch S.** 2015. Redox signaling and stress tolerance in plants: a focus on vitamin E. *Annals of the New York Academy of Sciences* **1340**, 29–38.
- Muller O, Cohu CM, Stewart JJ, Protheroe JA, Demmig-Adams B, Adams WW.** 2014. Association between photosynthesis and contrasting features of minor veins in leaves of summer annuals loading phloem via symplastic versus apoplastic routes. *Physiologia Plantarum* **152**, 174–183.
- Munné-Bosch S.** 2005. The role of a-tocopherol in plant stress tolerance. *Journal of Plant Physiology* **162**, 743–748.
- Ng PC, Henikoff S.** 2003. SIFT: predicting amino acid changes that affect protein function. *Nucleic Acids Research* **31**, 3812–3814.
- Nowicka B, Gruszka J, Kruk J.** 2013. Function of plastochromanol and other biological prenilylids in the inhibition of lipid peroxidation—a comparative study in model systems. *Biochimica et Biophysica Acta* **1828**, 233–240.
- Okabe Y, Asamizu E, Saito T, Matsukura C, Ariizumi T, Brès C, Rothan C, Mizoguchi T, Ezura H.** 2011. Tomato TILLING technology: development of a reverse genetics tool for the efficient isolation of mutants from Micro-Tom mutant libraries. *Plant and Cell Physiology* **52**, 1994–2005.
- Pfaffl MW, Horgan GW, Dempfle L.** 2002. Relative expression software tool (REST) for group-wise comparison and statistical analysis of relative expression results in real-time PCR. *Nucleic Acids Research* **30**, e36.
- Pino LE, Lombardi-Crestana S, Azevedo MS, Scotton DC, Borgo L, Quecini V, Figueira A, Peres LE.** 2010. The Rg1 allele as a valuable tool for genetic transformation of the tomato 'Micro-Tom' model system. *Plant Methods* **6**, 23.
- Quadrana L, Almeida J, Asís R, et al.** 2014. Natural occurring epialleles determine vitamin E accumulation in tomato fruits. *Nature Communications* **5**, 3027.
- Quadrana L, Almeida J, Otaiza SN, et al.** 2013. Transcriptional regulation of tocopherol biosynthesis in tomato. *Plant Molecular Biology* **81**, 309–325.
- Rastogi A, Yadav DK, Szymaska R, Kruk J, Sedlarova M, Pospisil P.** 2014. Singlet oxygen scavenging activity of tocopherol and plastochromanol in *Arabidopsis thaliana*: relevance to photooxidative stress. *Plant, Cell and Environment* **37**, 392–401.

- Re R, Pellegrini N, Proteggente A, Pannala A, Yang A, Rice-Evans C.** 1999. Antioxidant activity applying an improved ABTS radical cation decolorization assay. *Free Radical Biology and Medicine* **26**, 1231–1237.
- Reynolds ES.** 1963. The use of lead citrate at high pH as an electron-opaque stain in electron microscopy. *Journal of Cell Biology* **17**, 208–212.
- Sattler SE, Gilliland LU, Magallanes-Lundback M, Pollard M, Dellapenna D.** 2004. Vitamin E is essential for seed longevity and for preventing lipid peroxidation during germination. *The Plant Cell* **16**, 1419–1432.
- Schelbert S, Aubry S, Burla B, Agne B, Kessler F, Krupinska K, Hörtensteiner S.** 2009. Pheophytin pheophorbide hydrolase (pheophytinase) is involved in chlorophyll breakdown during leaf senescence in *Arabidopsis*. *The Plant Cell* **21**, 767–785.
- Serbinova E, Kagan V, Han D, Packer L.** 1991. Free radical recycling and intramembrane mobility in the antioxidant properties of alpha-tocopherol and alpha-tocotrienol. *Free Radical Biology and Medicine* **10**, 263–275.
- Seymour GB, Østergaard L, Chapman NH, Knapp S, Martin C.** 2013. Fruit development and ripening. *Annual Review of Plant Biology* **64**, 219–241.
- Song W, Maeda H, Dellapenna D.** 2010. Mutations of the ER to plastid lipid transporters TGD1, 2, 3 and 4 and the ER oleate desaturase FAD2 suppress the low temperature-induced phenotype of *Arabidopsis* tocopherol-deficient mutant *vte2*. *The Plant Journal* **62**, 1004–1018.
- Tamura K, Dudley J, Nei M, Kumar S.** 2007. MEGA4: Molecular Evolutionary Genetics Analysis (MEGA) software version 4.0. *Molecular Biology and Evolution* **24**, 1596–1599.
- Taylor NE, Greene EA.** 2003. PARSESNP: a tool for the analysis of nucleotide polymorphisms. *Nucleic Acids Research* **31**, 3808–3811.
- Traber MG, Atkinson J.** 2008. Vitamin E, antioxidant and nothing more. *Free Radical Biology and Medicine* **43**, 4–15.
- Till BJ, Reynolds SH, Greene EA, et al.** 2003. Large-scale discovery of induced point mutations with high-throughput TILLING. *Genome Research* **13**, 524–530.
- Triantaphylidès C, Havaux M.** 2009. Singlet oxygen in plants: production, detoxification and signaling. *Trends in Plant Science* **14**, 219–228.
- Valentin HE, Lincoln K, Moshiri F, et al.** 2006. The *Arabidopsis* vitamin E pathway gene5-1 mutant reveals a critical role for phytol kinase in seed tocopherol biosynthesis. *The Plant Cell* **18**, 212–224.
- Vicente MH, Zsögön A, Sá AFL, Ribeiro RV, Peres LEP.** 2015. Semi-determinate growth habit adjusts the vegetative-to-reproductive balance and increases productivity and water-use efficiency in tomato (*Solanum lycopersicum*). *Journal of Plant Physiology* **177**, 11–19.
- vom Dorp K, Hölzl G, Plohm C, Eisenhut M, Abraham M, Weber AP, Hanson AD, Dörmann P.** 2015. Remobilization of phytol from chlorophyll degradation is essential for tocopherol synthesis and growth of *Arabidopsis*. *The Plant Cell* **27**, 2846–2849.
- Watson ML.** 1958. Staining of tissue sections for electron microscopy with heavy metals. *Journal of Biophysical and Biochemical Cytology* **4**, 475–478.
- Welti R, Li W, Li M, Sang Y, Biesiada H, Zhou HE, Rajashekar CB, Williams TD, Wang X.** 2002. Profiling membrane lipids in plant stress responses. Role of phospholipase D alpha in freezing-induced lipid changes in *Arabidopsis*. *Journal of Biological Chemistry* **277**, 31994–32002.
- Yang W, Cahoon RE, Hunter SC, Zhang C, Han J, Borgschulte T, Cahoon EB.** 2011. Vitamin E biosynthesis, functional characterization of the monocot homogentisate geranylgeranyl transferase. *The Plant Journal* **65**, 206–217.
- Zbierzak AM, Kanwischer M, Wille C, et al.** 2010. Intersection of the tocopherol and plastoquinol metabolic pathways at the plastoglobule. *Biochemical Journal* **425**, 389–399.
- Zhang C, Cahoon RE, Hunter SC, Chen M, Han J, Cahoon EB.** 2013. Genetic and biochemical basis for alternative routes of tocotrienol biosynthesis for enhanced vitamin E antioxidant production. *The Plant Journal* **73**, 628–639.
- Zhang W, Liu T, Ren G, Hörtensteiner S, Zhou Y, Cahoon EB, Zhang C.** 2014. Chlorophyll degradation: the tocopherol biosynthesis related phytol hydrolase in *Arabidopsis* seeds is still missing. *Plant Physiology* **166**, 70–79.