

Dissecting the β -Aminobutyric Acid-Induced Priming Phenomenon in Arabidopsis

Jurriaan Ton,^{a,b,1} Gabor Jakab,^{a,c,1} Valérie Toquin,^c Victor Flors,^{a,d} Annalisa Iavicoli,^c Muriel N. Maeder,^c Jean-Pierre Métraux,^c and Brigitte Mauch-Mani^{a,2}

^aDepartment of Science, Laboratory of Biochemistry, University of Neuchâtel, 2007 Neuchâtel, Switzerland

^bSection of Phytopathology, Faculty of Biology, Utrecht University, 3584 CA Utrecht, The Netherlands

^cDepartment of Biology, Plant Biology, University of Fribourg, 1700 Fribourg, Switzerland

^dDepartment of Experimental Sciences, Plant Physiology Section, University of Jaume, Borriol s/n, 12071 Castellón, Spain

Plants treated with the nonprotein amino acid β -aminobutyric acid (BABA) develop an enhanced capacity to resist biotic and abiotic stresses. This BABA-induced resistance (BABA-IR) is associated with an augmented capacity to express basal defense responses, a phenomenon known as priming. Based on the observation that high amounts of BABA induce sterility in *Arabidopsis thaliana*, a mutagenesis screen was performed to select mutants impaired in BABA-induced sterility (*ibs*). Here, we report the isolation and subsequent characterization of three T-DNA-tagged *ibs* mutants. Mutant *ibs1* is affected in a cyclin-dependent kinase-like protein, and *ibs2* is defective in *AtSAC1b* encoding a polyphosphoinositide phosphatase. Mutant *ibs3* is affected in the regulation of the *ABA1* gene encoding the abscisic acid (ABA) biosynthetic enzyme zeaxanthin epoxidase. To elucidate the function of the three *IBS* genes in plant resistance, the mutants were tested for BABA-IR against the bacterium *Pseudomonas syringae* pv *tomato*, the oomycete *Hyaloperonospora parasitica*, and BABA-induced tolerance to salt. All three *ibs* mutants were compromised in BABA-IR against *H. parasitica*, although to a different extent. Whereas *ibs1* was reduced in priming for salicylate (SA)-dependent trailing necrosis, mutants *ibs2* and *ibs3* were affected in the priming for callose deposition. Only *ibs1* failed to express BABA-IR against *P. syringae*, which coincided with a defect in priming for SA-inducible *PR-1* gene expression. By contrast, *ibs2* and *ibs3* showed reduced BABA-induced tolerance to salt, which correlated with an affected priming for ABA-inducible gene expression. For all three *ibs* alleles, the defects in BABA-induced sterility and BABA-induced protection against *P. syringae*, *H. parasitica*, and salt could be confirmed in independent mutants. The data presented here introduce three novel regulatory genes involved in priming for different defense responses.

INTRODUCTION

Plants have evolved sophisticated mechanisms to defend themselves against pathogens. Besides constitutively expressed barriers, plants can recognize the presence of a pathogen and respond by activating defense reactions. The success of this defense response depends on the speed by which the plant recognizes the attacking pathogen and the intensity by which the appropriate defense mechanism is activated. If the plant fails to respond in time, the appropriate defenses are activated too late, and the pathogen can colonize the plant tissue. In this situation, the plant activates defense mechanisms around the sites of pathogen invasion. These pathogen-inducible defenses are part of the basal resistance response and contribute to slowing down the colonization by the pathogen. The effective-

ness of this basal resistance can be enhanced by specific biotic or abiotic stimuli experienced by the plant before contact with the pathogen (Sticher et al., 1997; Mauch-Mani and Métraux, 1998; Pieterse et al., 1998; Zimmerli et al., 2000; Ton et al., 2002). This phenomenon is generally known as induced resistance.

The classical type of induced resistance is often referred to as systemic acquired resistance (SAR) and occurs both in adjacent and distal plant parts upon localized infection by a necrotizing pathogen (Sticher et al., 1997). The signaling pathway controlling SAR requires endogenous accumulation of the stress hormone salicylic acid (SA; Gaffney et al., 1993; Nawrath and Métraux, 1999) and an intact defense regulatory protein No PR-1/No Immunity 1/Salicylic Acid Insensitive 1 (NPR1/NIM1/SAI1) (Cao et al., 1994; Delaney et al., 1995; Shah et al., 1997). The expression of SAR, triggered by either pathogen infection or treatment with SA or its functional analogs 2,6-dichloroisonicotinic acid or benzothiadiazole (BTH), is tightly associated with the transcriptional activation of genes encoding pathogenesis-related proteins (PRs; Van Loon, 1997).

The nonprotein amino acid β -aminobutyric acid (BABA) activates an induced resistance response as well. Although the protective effect of BABA against numerous plant diseases

¹ These authors contributed equally to this work.

² To whom correspondence should be addressed. E-mail: brigitte.mauch@unine.ch; fax: 41-32-7182201.

The author responsible for distribution of materials integral to the findings presented in this article in accordance with the policy described in the Instructions for Authors (www.plantcell.org) is: Brigitte Mauch-Mani (brigitte.mauch@unine.ch).

is well documented (Jakab et al., 2001; Cohen, 2002), the molecular mechanisms behind this type of induced resistance response are less well studied than those of SAR. Only recently, it became clear that the signaling pathway controlling BABA-induced resistance (BABA-IR) is partially different from that of SAR. BABA-IR against the bacterial pathogen *Pseudomonas syringae* pv *tomato* DC3000 and the fungal pathogen *Botrytis cinerea* resembles SAR in that it requires endogenous accumulation of SA and an intact NPR1/NIM1/SAI1 protein (Zimmerli et al., 2000, 2001). However, BABA-IR against the oomycetous pathogen *Hyaloperonospora parasitica*, as well as BABA-IR against the necrotrophic fungus *Plectosphaerella cucumerina*, is unaffected in SA-nonaccumulating NahG plants and SA-insensitive *npr1-1* plants (Zimmerli et al., 2000; Ton and Mauch-Mani, 2004). By contrast, mutants impaired in the production or sensitivity to the stress hormone abscisic acid (ABA) are blocked in BABA-IR against *P. cucumerina* (Ton and Mauch-Mani, 2004). This points to the existence of an additional ABA-dependent defense signaling pathway that functions independently of SA and NPR1/NIM1/SAI1. Hence, BABA-IR involves both SA-dependent and ABA-dependent defense mechanisms, and the importance of these defenses varies according to the nature of the challenging pathogen.

An intriguing aspect of BABA-IR is that it confers protection against an extraordinarily wide range of biotic and abiotic stresses (Cohen, 2002). In *Arabidopsis thaliana*, BABA-IR has been shown to be effective against both necrotrophic and biotrophic pathogens, as well as certain types of abiotic stress, such as drought and salinity (Jakab et al., 2001; G. Jakab and J. Ton, unpublished results). This poses the question: How can BABA induce resistance against so many stresses without causing major trade-off effects on plant growth because of energy investments in costly defense mechanisms? A plausible explanation is that BABA does not directly activate the plant's defense arsenal, but rather conditions the plant for a faster and stronger activation of stress-specific defense mechanisms upon exposure to stress (Zimmerli et al., 2000; Jakab et al., 2001; Ton and Mauch-Mani, 2004). This mode of protection confers enhanced resistance without direct activation of defense mechanisms upon induction treatment. By analogy with a phenotypically similar phenomenon in animals and humans (Hayes et al., 1991; Wyatt et al., 1996), this enhanced capacity to express basal defense mechanisms is called sensitization, potentiation, or priming (Conrath et al., 2002).

The physiological and molecular mechanisms underlying priming are widely unknown. Historically, induced resistance research has mostly been concentrating on direct activation of defense mechanisms upon treatment with the resistance-inducing agent. The possibility of priming as a mechanism of protection has often been overseen because it only becomes apparent in stressed plants. First reports suggesting the occurrence of priming in relation to induced resistance were purely descriptive. In several systems, the timing of the onset of defense was found to be altered: induced plants responded more efficiently to pathogen attack by a faster and stronger accumulation of callose, a higher level of cell wall lignification, or a faster activation of defense-related gene expression. In all these cases, the augmented defense reaction correlated with an enhanced

resistance (Skipp and Deverall, 1973; Dean and Kuc, 1987; Kovats et al., 1991a, 1991b; Silverman et al., 1995). The first systematic investigation of priming was initiated by Kauss and colleagues (Kauss et al., 1992a, 1992b). Using the model system of parsley (*Petroselinum crispum*) cell suspension cultures, they showed that pretreatment with SA, or its functional analogs 2,6-dichloroisonicotinic acid and BTH, primed the cells to secrete elevated amounts of derivatives of the phytoalexin coumarin after treatment with the *pmg* elicitor from *Phytophthora megasperma* (Kauss et al., 1992a; Katz et al., 1998; Kohler et al., 2002). Additionally, Mur et al. (1996) showed that tobacco (*Nicotiana tabacum*) plants pretreated with SA displayed augmented expression of defense-related genes that are usually not directly responsive to SA itself. They proposed a dual role for SA in induced resistance: a direct one leading to the expression of some PR proteins and an indirect one regulating augmented expression of defense-related genes, such as phenylalanine ammonia-lyase, upon elicitation of defense.

In *Arabidopsis*, treatment with BABA results in a priming for multiple defense mechanisms. In the first place, BABA primes for SA-dependent defense mechanisms, as evidenced by an augmented expression of the SA-inducible marker gene *PR-1* upon infection by *P. syringae* pv *tomato* or *B. cinerea* (Zimmerli et al., 2000, 2001). The fact that NahG and *npr1-1* plants are unable to express this BABA-IR suggests that the priming for SA-inducible defenses is critical for the protection against these pathogens (Zimmerli et al., 2000, 2001). During the expression of BABA-IR against the necrotrophic fungi *P. cucumerina* or *Alternaria brassicicola*, there is a similar augmentation in the expression of SA-inducible defenses (Ton and Mauch-Mani, 2004). However, activation of SA-inducible defenses by treatment with BTH fails to induce resistance against these fungi, and both NahG and *npr1-1* plants are unaffected in BABA-IR against *P. cucumerina* (Ton and Mauch-Mani, 2004). This indicates that the priming for SA-dependent resistance does not contribute to the level of BABA-IR against necrotrophic fungi. Apart from priming for SA-dependent resistance, BABA also primes for a faster and stronger deposition of callose-rich papillae under the appressoria of pathogenic fungi and oomycetes. Recently, we found that the callose-deficient mutant *pmr4-1* (Nishimura et al., 2003) is blocked in BABA-IR against *P. cucumerina* and *A. brassicicola* (Ton and Mauch-Mani, 2004; J. Ton, unpublished results), suggesting that the augmented callose deposition is important for BABA-IR against these fungi. Hence, BABA primes for different defense mechanisms, and the effectiveness of these augmented defense reactions depends on the challenging pathogen.

To learn more about the molecular mechanisms behind BABA-IR, we performed a mutagenesis screen to select for *Arabidopsis* mutants that are impaired in the responsiveness to BABA. Based on the observation that repeated treatment with high doses of BABA triggers female sterility (Jakab et al., 2001), we have isolated mutants with an impaired BABA-induced sterility (*ibs*) response. Evaluation of the defense-related phenotype of three of these *ibs* mutants revealed distinct mutant phenotypes in the BABA-induced priming for specific defense mechanisms. Here, we introduce three novel regulatory genes that play a role in the priming for defense.

RESULTS

Isolation of Arabidopsis *ibs* Mutants

The mutagenesis screen for *ibs* mutants is based on the observation that higher doses of BABA induce sterility in Arabidopsis (Jakab et al., 2001). A T-DNA–mutagenized population of Arabidopsis (accession Wassilewskija-0 [Ws-0]; Feldmann, 1991) was screened for their inability to express female sterility after repeated treatment with 300 μ M BABA, applied as a soil-drench. Of the \sim 90,000 T3 plants screened, 73 putative *ibs* mutants were identified showing formation of siliques after repeated treatment with BABA. Rescreening the progeny of the 17 most pronounced mutants confirmed all *ibs* phenotypes. Subsequently, each of these 17 mutants was tested by DNA gel blot analysis to determine the number of T-DNA insertions. Mutants carrying only one or two T-DNA insertions were further selected for plasmid rescue to identify flanking genomic DNA sequences. Sequence analysis of the rescued plasmids revealed genomic DNA sequences from four mutants, designated *ibs1*, *ibs2*, *ibs3*, and *ibs4*.

IBS1 Encodes a Cyclin-Dependent Kinase–Like Protein

Mutants *ibs1* and *ibs4* have a T-DNA insertion at exactly the same locus that maps to the upper arm of chromosome I. The T-DNA is inserted downstream of the open reading frame of a putative kinase gene (At1g18670; Figure 1A). Mutant *ibs4* has an additional T-DNA insertion that has not been mapped. Cloning a wild-type cDNA fragment of the 3'-end of the *IBS1* gene revealed an unpredicted splicing site at 12 bp upstream of the predicted stop codon. An alternative stop codon was found at 3452 bp downstream of the start codon, which is 718 bp further than the predicted stop codon. The poly(A) tail of the mRNA starts at 344 bp downstream of the stop codon, which is 32 bp upstream of the T-DNA insertion in *ibs1* and *ibs4*. To examine whether the *IBS1* gene plays a role in BABA responsiveness, three sequence-indexed T-DNA insertion lines from the Syngenta SAIL collection (accession Columbia-0 [Col-0]) were tested for BABA-induced sterility. The *s-634* mutant has a T-DNA insertion in the *IBS1* promoter region at 707 bp upstream of the start codon, whereas mutants *s-111* and *s-765* contain a T-DNA insertion in the second exon of the *IBS1* gene (Figure 1A). Upon BABA treatment, mutants *s-111* and *s-765* produced significantly more seeds than wild-type plants, which was comparable to the amount of seeds produced by BABA-treated *ibs1* plants (Figure 1B). This confirms that mutations in the *IBS1* gene cause the *ibs1* phenotype. By contrast, the promoter-tagged line *s-634* displayed a similar level of BABA-induced sterility as wild-type plants, indicating that the T-DNA insertion at 707 bp from the start codon does not cause the *ibs1* mutant phenotype. The predicted translation product of *IBS1* contains a Ser/Thr protein kinase domain and an N-terminal myristoylation sequence (Figure 2). BLAST analysis of the *IBS1* protein revealed 80% sequence identity with a cyclin-dependent kinase (CDK)-like protein (At1G74330) from Arabidopsis (Figure 2). Furthermore, *IBS1* has 48% sequence identity with the CDC2 protein from Arabidopsis, a CDK involved in meiotic and mitotic cell divisions

(Moran and Walker, 1993), and 44% sequence identity with the CRK1 protein of *Beta vulgaris*, which belongs to the superfamily of calcium-dependent protein kinases (Hrabak et al., 2003).

IBS2 Encodes a Phosphoinositide Phosphatase

Mutant *ibs2* contains one truncated version of the T-DNA on the lower arm of chromosome V. The insertion is in the 5'-untranslated region (5'-UTR) of the *AtSAC1b* gene (At5g66020) at 80 bp from the start codon (Figure 1A). The *AtSAC1b* gene has recently been characterized as a polyphosphoinositide phosphatase that modulates cellular phosphoinositide levels (Despres et al., 2003). To confirm the involvement of the *AtSAC1b//IBS2* gene in BABA responsiveness, we have tested a sequence-indexed T-DNA insertion line from the Salk Institute collection (accession Col-0) for BABA-induced sterility. This *s-031243* mutant contains a T-DNA insertion in the 5'-UTR of the *AtSAC1b//IBS2* gene at 76 bp upstream of the start codon (Figure 1A). Mutant *s-031243* displayed a similar reduction in BABA-induced sterility as *ibs2* plants (Figure 1B), confirming that mutations in the 5'-UTR of *AtSAC1b//IBS2* cause the *ibs2* phenotype.

IBS3 Encodes a Zeaxanthin Epoxidase

The *ibs3* mutant contains a T-DNA insertion that maps to the lower arm of chromosome V. The T-DNA is inserted downstream of the 3'-UTR of the *ABA1* gene (At5g67030) at 223 bp from the poly(A) site and 592 bp from the stop codon (Figure 1A). This gene encodes a single-copy zeaxanthin epoxidase gene that functions in the biosynthesis pathway of the abiotic stress hormone ABA (Koornneef et al., 1982; Zhu, 2002). To examine whether independent mutations in the *ABA1//IBS3* gene also cause the *ibs3* phenotype, we quantified BABA-induced sterility in Col-0 mutants *aba1-5* and *npq2-1* that both carry ethyl methanesulfonate-induced mutations in this gene (Niyogi et al., 1998). Similarly to *ibs3* plants, *aba1-5* and *npq2-1* produced significantly more seeds than the corresponding wild-type plants upon treatment with BABA (Figure 1B). This indicates that the *ABA1//IBS3* gene plays a role in the BABA-induced sterility response.

Because the T-DNA insertion in *ibs3* is relatively far from the transcribed region of the *ABA//IBS3* gene (233 bp downstream of the poly(A) site), we examined whether this T-DNA insertion is solely responsible for the mutant phenotype. To this end, *ibs3* plants were transformed with a genomic DNA fragment from 805 bp upstream of the start codon to 2352 bp downstream of the stop codon of *ABA1//IBS3*. The resulting complementation line *T-IBS3g* was tested for BABA-induced sterility and BABA-induced protection against salt stress. Upon treatment with increasing concentrations of BABA, *T-IBS3g* plants displayed a similar reduction in the number of seeds per silique as wild-type plants, whereas *ibs3* plants were significantly reduced in this BABA-induced sterility (Figure 1C). Additionally, both *T-IBS3g* and wild-type plants showed a statistically significant reduction in the number of wilting plants upon treatment with BABA and subsequent soil-drench treatment with 300 mM NaCl, whereas *ibs3* plants completely failed to develop this BABA-induced tolerance

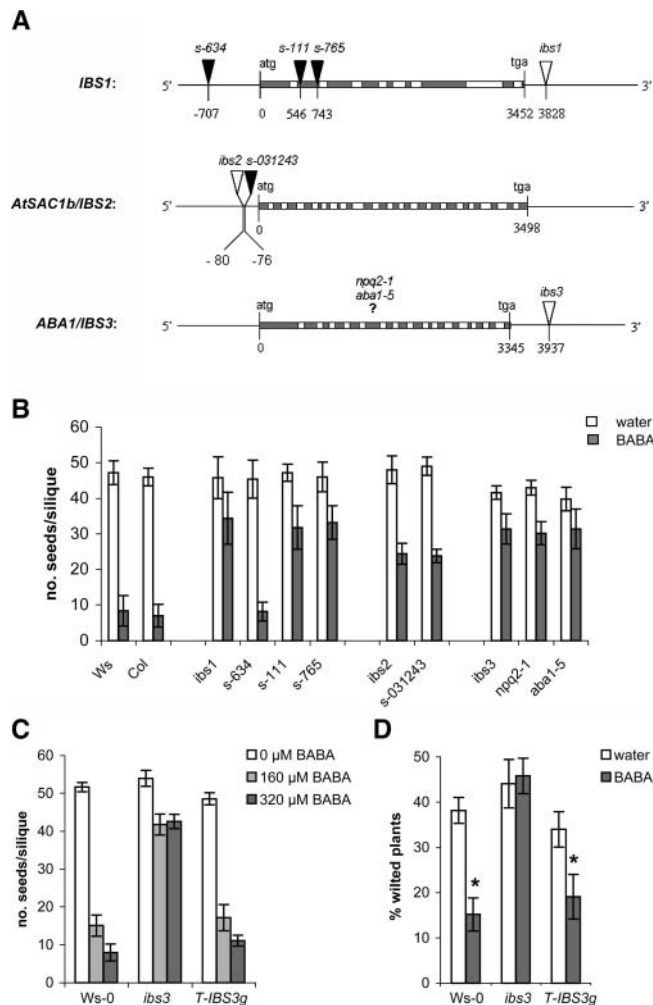


Figure 1. T-DNA Insertions in Different Arabidopsis Mutants, Their Corresponding *ibs* Phenotypes, and Genetic Complementation of the *ibs3* Mutant for BABA-Induced Sterility and BABA-Induced Tolerance to Salt Stress.

(A) Genomic sequences of *IBS* genes and T-DNA locations in the different *ibs* mutants. White triangles represent T-DNA insertions in the original *Ws-0* mutants *ibs1*, *ibs2*, and *ibs3*; black triangles represent T-DNA insertions in sequence-indexed knockout *Col-0* mutants *s-111*, *s-634*, *s-765*, and *s-031243*. Locations of the ethyl methanesulfonate mutations in the *ABA1/IBS3* gene of *Col-0* mutants *aba1-5* and *npq2-1* are unknown.

(B) Quantification of BABA-induced sterility in 6-week-old plants. Four-week-old plants were repeatedly soil-drenched with water or BABA to a final concentration of 300 μ M. Values presented are means (\pm SD) of the number of seeds per silique ($n = 20$).

(C) Quantification of BABA-induced sterility in *Ws-0*, *ibs3*, and *T-IBS3g* plants upon soil-drench treatment with increasing concentrations of BABA. *T-IBS3g* plants were generated by transforming *ibs3* plants with a construct containing the *ABA1/IBS3* genomic clone, including 805-kb of the promoter region and a 2352-bp region downstream of the stop codon of *ABA1/IBS3*. Values presented are means (\pm SD) of the number of seeds per silique ($n = 20$).

(D) Quantification of BABA-induced tolerance to salt stress in *Ws-0*, *ibs3*, and *T-IBS3g* plants. Four-week-old plants were soil-drenched with

(Figure 1D). Hence, transformation with the genomic fragment of *ABA1/IBS3* complements for the *ibs3* mutation, demonstrating that the T-DNA insertion at 223 bp from the 3'-translated region of the *ABA1/IBS3* gene is responsible for the *ibs3* mutant phenotype.

IBS1* Regulates Priming for SA-Dependent Defenses against *P. syringae

Treatment of Arabidopsis with BABA induces resistance against the bacterial pathogen *P. syringae* pv *tomato* DC3000. This BABA-IR depends on the SA- and NPR1/NIM1/SAI1-dependent defense pathway and is marked by an augmented expression of the SA-inducible marker gene *PR-1* (Zimmerli et al., 2000). To test the involvement of the three *IBS* genes in BABA-IR against *P. syringae*, 5-week-old plants were soil-drenched with 250 μ M BABA and subsequently inoculated with the bacteria. Three days after inoculation, the level of disease and bacterial growth in the leaves was quantified. All noninduced mutant plants showed a similar level of susceptibility to *P. syringae* as non-induced wild-type plants (Figure 3), indicating that the three *ibs* mutations do not affect basal resistance against the pathogen. In wild-type plants, as well as *ibs2* and *ibs3* plants, treatment with BABA caused a significant reduction in bacterial proliferation and disease severity (Figures 3A and 3B), indicating that *ibs2* and *ibs3* are not impaired by BABA-IR against *P. syringae*. By contrast, *ibs1* plants failed to develop this BABA-IR (Figure 3). This demonstrates that the *ibs1* mutant is blocked in BABA-IR against *P. syringae*. Mutants *s-111* and *s-765*, which both contain a T-DNA insertion in the open reading frame of the *IBS1* gene, were similarly affected in BABA-IR against *P. syringae* (see Supplemental Figure 1 online). It can thus be concluded that mutations in the *IBS1* gene block the plant's ability to express BABA-IR against *P. syringae*.

To investigate whether the impaired BABA-IR against *P. syringae* in *ibs1* is related to a defect in the priming for SA-dependent defenses, we monitored the expression of the SA-inducible marker gene *PR-1* in wild-type and *ibs1* plants upon infection by *P. syringae*. Noninduced plants showed a transient increase in the level of *PR-1* expression that started at 42 h postinoculation (hpi; Figure 4). This pattern of *PR-1* gene expression was similar in both wild-type and *ibs1* plants, indicating that the *ibs1* mutation does not affect the basal activation of the *PR-1* gene. Upon treatment with BABA, wild-type plants showed an earlier and stronger expression of the *PR-1* gene, which started at 16 hpi and reached a maximum at 66 hpi. By contrast, BABA-treated *ibs1* plants failed to show this augmented expression of the *PR-1* gene (Figure 4). This indicates that the *IBS1* gene regulates priming for SA-dependent resistance.

BABA to a concentration of 250 μ M and 2 d later soil-drenched with NaCl to a concentration of 300 mM. Values presented are means (\pm SD) of the percentage of wilted plants per pot at 3 d after salt treatment. Asterisks indicate statistically significant differences between control and BABA-treated plants (Student's *t* test; $\alpha = 0.05$; $n = 10$).

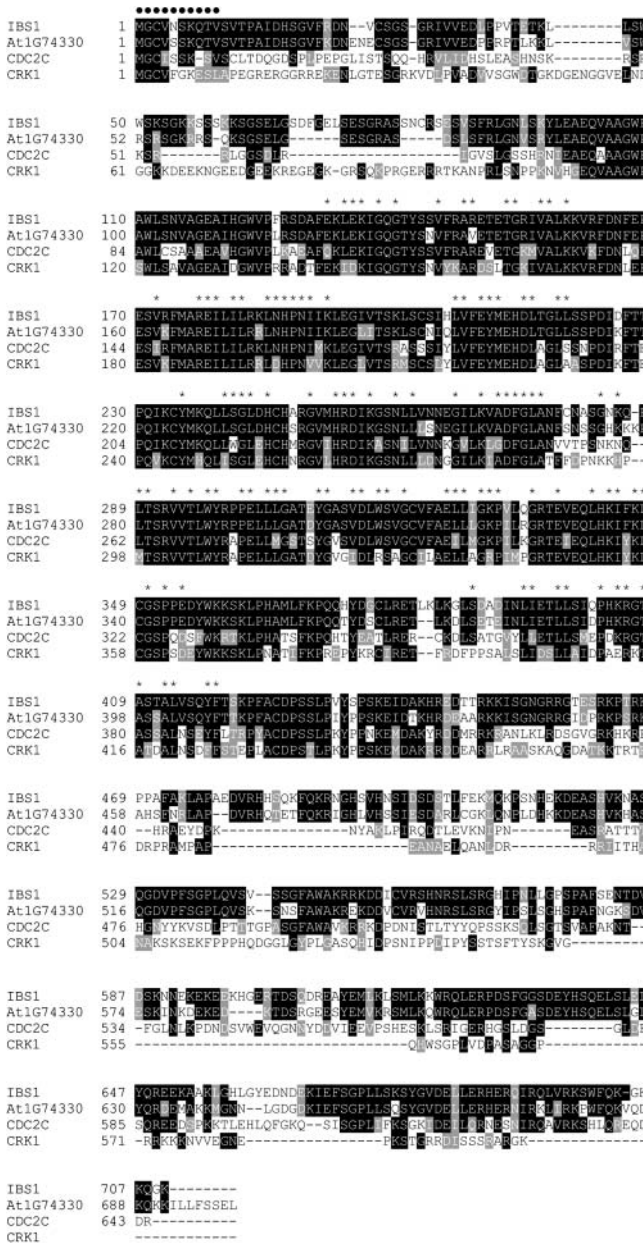


Figure 2. Amino Acid Sequence Comparison between IBS1 and Protein Kinases from Arabidopsis (At1G74330 and CDC2C) and *B. vulgaris* (CRK1).

Identical and similar amino acid sequences to IBS1 are indicated by black and gray shading, respectively. Asterisks indicate the conserved Ser/Thr protein kinase domain, and black circles indicate the N-terminal myristoylation domain.

Mutants *ibs1*, *ibs2*, and *ibs3* Are Differentially Impaired in BABA-IR against *H. parasitica*

Treatment of Arabidopsis with BABA triggers resistance against the oomycete *H. parasitica* (Zimmerli et al., 2000). The expression of this BABA-IR correlates with enhanced levels of trailing necrosis around the pathogen hyphae and an augmented de-

position of callose under the appressoria of the oomycete (Zimmerli et al., 2000). To determine whether *ibs1*, *ibs2*, and *ibs3* are impaired in BABA-IR against *H. parasitica*, 4-week-old plants were soil-drenched with increasing concentrations of BABA and subsequently inoculated with a suspension containing the asexual spores (conidia) of the pathogen. The level of disease was assessed at 8 d after inoculation. Treating wild-type plants with the relatively low dose of 40 μ M BABA reduced the number of sporulating leaves by 71% (Figure 5A). Treatment of *ibs2* and *ibs3* plants with 40 μ M BABA resulted in 23 and 20% reduction of sporulating leaves, respectively. Although this level of disease suppression was statistically significant ($0.01 < P < 0.05$), it was considerably less than that in BABA-treated wild-type plants (Figure 5A). Apparently, *ibs2* and *ibs3* are partially affected in BABA-IR against *H. parasitica* upon induction by 40 μ M BABA. On the other hand, *ibs1* plants showed no

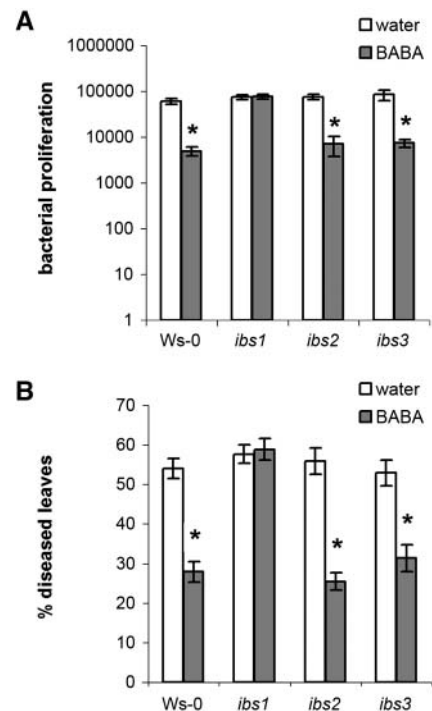


Figure 3. BABA-IR against *P. syringae* pv *tomato* DC3000 in Wild-Type Plants (Ws-0) and *ibs* Mutants of Arabidopsis.

Six-week-old plants were soil-drenched with BABA to a final concentration of 250 μ M and 2 d later challenge-inoculated with a bacterial suspension of *P. syringae* pv *tomato* DC3000 at 1.5×10^7 colony-forming units \cdot mL⁻¹. Data are from a representative experiment that was repeated with similar results.

(A) Bacterial growth in the leaves was determined over a 3-d time interval. Values presented are means (\pm SD) of the log of the proliferation values. Asterisks indicate statistically significant differences compared with noninduced control plants (Student's *t* test; $\alpha = 0.05$; $n = 5$).

(B) Disease symptoms were quantified at 3 d after inoculation and quantified as the proportion of leaves with symptoms. Data presented are means of the average percentage of diseased leaves per plant (\pm SD). Asterisks indicate statistically significant differences compared with noninduced control plants (Student's *t* test; $\alpha = 0.05$; $n = 20$ to 25).

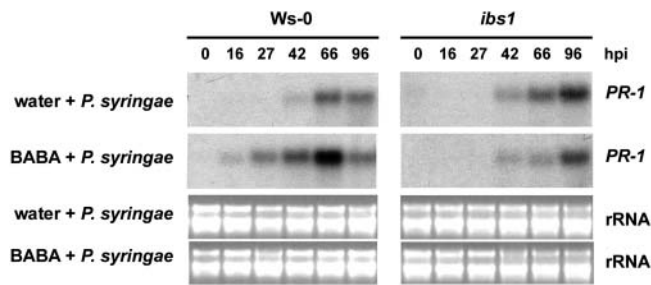


Figure 4. RNA Gel Blot Analysis of the SA-Inducible *PR-1* Gene Expression in Wild-Type Plants (Ws-0) and *ibs1* Plants.

Six-week-old plants were treated with either water or BABA (250 μ M). At 2 d after induction treatment, the plants were inoculated with *P. syringae* pv *tomato* DC3000. Total RNA was extracted at different time points after inoculation. Each time point represents infected leaves from five different plants. RNA gel blots were hybridized with a P^{32} -labeled probe against *PR-1*. Ethidium bromide staining of the RNA gel (rRNA) was used to show equal loading. This experiment was repeated twice, yielding similar results.

statistically significant reduction in the number of sporulating leaves upon treatment with 40 μ M BABA, indicating that this mutant is completely blocked in BABA-IR against *H. parasitica* (Figure 5A). Mutants *s-111* and *s-765*, which carry a T-DNA in the *IBS1* gene, displayed a similar nonresponsiveness to treatment with 40 μ M BABA as *ibs1* plants (see Supplemental Figure 2 online). Hence, *IBS1* regulates a component of BABA-IR that is already active upon induction by relatively low amounts of BABA.

Because resistance induced by low amounts of BABA is related to enhanced trailing necrosis around the growing hyphae of *H. parasitica* (Zimmerli et al., 2000), infected leaves were microscopically examined at 4 d after challenge inoculation. Staining the leaves with lactophenol trypan-blue revealed that BABA-treated *ibs1* plants failed to show enhanced levels of trailing necrosis, whereas *ibs2* and *ibs3* were unaffected in this priming response (Figure 5B). In a separate experiment, SA-nonaccumulating NahG plants, SA-insensitive *npr1-1* plants, and *s-111* and *s-765* plants showed a similar defect in the augmented formation of trailing necrosis as *ibs1* plants (data not shown). This not only indicates that mutations in the *IBS1* gene block the BABA-induced priming for trailing necrosis, but it also shows that the augmented expression of the trailing necrosis depends on the SA-dependent defense pathway.

Upon induction with higher concentrations of BABA (80 and 160 μ M), wild-type plants almost entirely suppressed sporulation by *H. parasitica* (Figure 5A). This relatively high level of resistance correlated with a threefold increase in the number of spores that induce callose depositions in the epidermal cell layer (Figure 5C). Like wild-type plants, *ibs1*, *s-111*, and *s-765* plants displayed relatively high levels of BABA-IR at 80 and 160 μ M BABA (Figure 5A; see Supplemental Figure 2A online). Furthermore, the augmented deposition of callose in BABA-treated *ibs1*, *s-111*, and *s-765* was comparable to that observed in BABA-treated wild-type plants (Figure 5C; see Supplemental Figure 2B online). This indicates that mutations in the *IBS1* gene do not have an effect on the priming for callose and therefore hardly affect the resistance against *H. parasitica* upon induction by relatively high doses of

BABA. By contrast, *ibs2* and *ibs3* plants were significantly reduced in BABA-IR against *H. parasitica* at 80 and 160 μ M BABA (Figure 5A). This decrease in BABA-IR correlated with reduced levels of callose accumulation (Figure 5C). Mutant *s-031243*, carrying a T-DNA in the 5'-UTR of the *AtSAC1b/IBS2* gene, and mutants *npq2-1* and *aba1-5*, containing ethyl methane-sulfonate mutations in the *ABA1/IBS3* gene (Niyogi et al., 1998), were similarly affected in BABA-IR and callose deposition

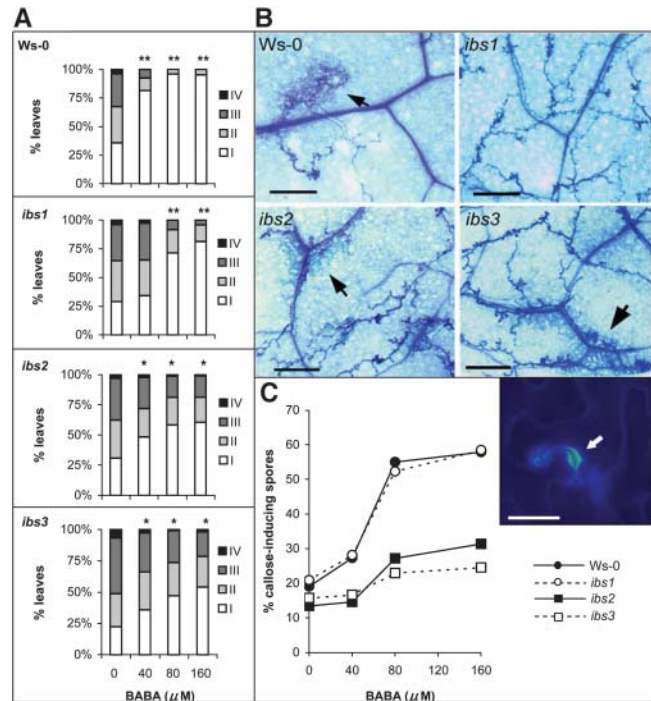


Figure 5. BABA-IR against *H. parasitica* Strain EMWA in Wild-Type Plants (Ws-0) and *ibs* Mutants.

Four-week-old plants were soil-drenched with BABA to the indicated concentrations and 2 d later challenge inoculated by spraying a suspension of 5×10^4 conidiospores/mL onto the leaves.

(A) The level of disease severity was quantified at 8 d after inoculation. Disease rating is expressed as the percentages of leaves in disease classes I (no sporulation), II (<50% of the leaf area covered by sporangia), III (>50% of the leaf area covered by sporangia), and IV (heavily covered with sporangia, with additional chlorosis and leaf collapse). Asterisks indicate statistically significant different distributions of the disease severity classes compared with the noninduced control treatments (χ^2 ; single asterisks, $P < 0.05$; double asterisks, $P < 0.001$). The data presented are from a representative experiment that was repeated with similar results.

(B) Colonization of BABA-treated leaves by *H. parasitica* at 4 d after challenge inoculation. Leaves were stained with lactophenol/trypan-blue and analyzed by light microscopy. Arrows indicate trailing necrosis. Bars = 100 μ m.

(C) Quantification of callose deposition at 2 d after challenge inoculation. Leaves were stained with calcofluor/aniline-blue and analyzed by epifluorescence microscopy (UV). Callose deposition was quantified by determining the percentage of callose-inducing spores in the epidermal cell layer. Inset shows a representative example of a germinating *H. parasitica* spore triggering callose deposition in an epidermal cell. Bar = 15 μ m.

(see Supplemental Figure 2 online). This indicates that mutations in *AtSAC1b//IBS2* and *ABA1//IBS3* affect the augmented callose response, which consequently reduces the level of BABA-IR against *H. parasitica*.

Mutants *ibs2* and *ibs3* Are Impaired in Priming for ABA-Dependent Defenses against Salt Stress

BABA protects *Arabidopsis* against osmotic stress. This BABA response requires an intact ABA-dependent signaling pathway (Jakab et al., 2001; G. Jakab and J. Ton, unpublished results). To investigate the involvement of the *IBS* genes in this BABA-induced tolerance, 4-week-old *Ws-0*, *ibs1*, *ibs2*, and *ibs3* plants were treated with either water or 250 μ M BABA and subsequently soil-drenched with 300 mM NaCl. At different time points after salt application, the percentage of wilting plants was determined. Noninduced wild-type plants showed a steady increase in the number of wilting plants up to 70% at 5 d after salt treatment (Figure 6). Pretreatment with BABA resulted in a statistically significant reduction in the number of wilting plants. At 5 d after salt treatment, the number of BABA-treated plants with wilting symptoms was reduced by 60% in comparison with noninduced control plants (Figure 6). The *ibs1* mutant expressed wild-type levels of BABA-induced tolerance, indicating that the *ibs1* mutation does not affect BABA-induced tolerance to salt. By contrast, the level of BABA-induced tolerance was considerably less pronounced in *ibs2* plants: at 1, 2, and 3 d after salt application, there was no statistically significant reduction in

the number of wilting plants by BABA. Only at 5 d after salt application, BABA-treated *ibs2* plants showed statistically significant reduction in the number of wilting plants (35%; $P = 0.004$). The allelic *ibs2* mutant *s-031243* displayed a comparable reduction in BABA-induced tolerance (see Supplemental Figure 3 online). In *ibs3* plants, no significant effect by BABA on the number of wilting plants could be observed at all time points, indicating that this mutant is completely blocked in BABA-induced tolerance to salt. Consistent with this, mutants *npq2-1* and *aba1-5* showed a similar block in the BABA-induced tolerance to salt (see Supplemental Figure 3 online). Apart from the defects in BABA-induced protection, noninduced *ibs3*, *npq2-1*, and *aba1-5* plants also displayed reduced levels of salt tolerance compared with noninduced wild-type plants (Figure 6; see Supplemental Figure 3 online). Apparently, mutations in the *ABA1//IBS3* gene not only block BABA-induced tolerance, but also affect basal tolerance to salt stress.

To examine whether the impaired BABA-induced tolerance in *ibs2* and *ibs3* is related to a defect in the priming for ABA-dependent defense mechanisms, we quantified expression of the ABA-inducible genes *RAB18* and *RD29A* upon application of increasing amounts of salt. Noninduced wild-type plants showed little induction of the *RAB18* and *RD29A* genes at 100 mM NaCl. Increasing the salt concentrations in the soil from 250 to 500 mM resulted in a dose-dependent activation of *RAB18* and *RD29A* (Figure 7). Wild-type plants pretreated with 250 μ M BABA showed enhanced levels of *RAB18* and *RD29A* expression at 100 and 250 mM salt compared with noninduced plants. This augmentation in ABA-induced gene expression was considerably less pronounced in BABA-treated *ibs2* plants and absent in *ibs3* plants (Figure 7). These results indicate that mutations in *AtSAC1b//IBS2* and *ABA1//IBS3* affect the priming for ABA-dependent defenses, causing defects in BABA-induced tolerance to salt.

DISCUSSION

Screening for Plants Impaired in BABA-Induced Sterility Yields Novel Mutants Affected in Priming for Defense

The mutagenesis screen used in this study is based on the effect that relatively high amounts of BABA induce female sterility (Jakab et al., 2001). Out of 90,000 plants screened, 73 putative mutants with an impaired BABA-induced sterility (*ibs*) phenotype were selected. Further characterization of three of these *ibs* mutants revealed distinct mutant phenotypes with respect to BABA-IR against biotic and abiotic stresses. Interestingly, none of the three *ibs* mutants was blocked in BABA-IR against all three stresses tested. This indicates that *ibs1*, *ibs2*, and *ibs3* are not disturbed in the uptake or perception of BABA, but rather in the priming for specific defense reactions. Additionally, we found evidence that the three *IBS* genes encode regulatory proteins that are involved in distinct signal transduction pathways. This suggests that BABA-induced sterility is achieved through a combined action of different signaling pathways and that each of these pathways play a specific role in the priming for defense against biotic or abiotic stress. Consistent with this, we found that every *ibs* mutant still showed a residual reduction in seed

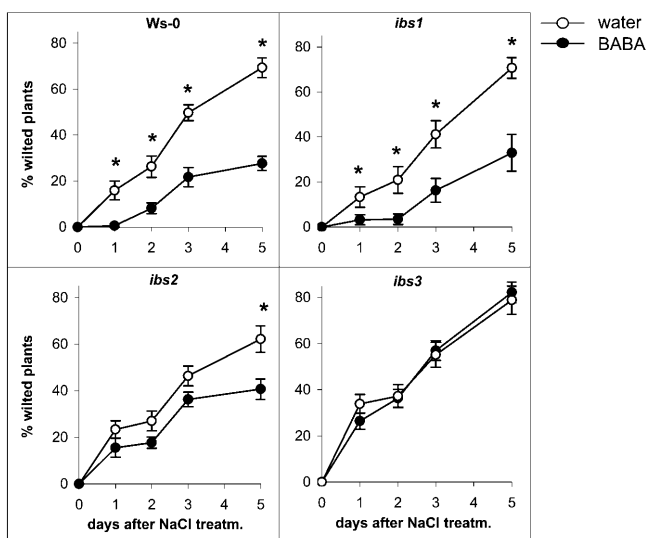


Figure 6. BABA-Induced Tolerance to Salt Stress in Wild-Type Plants (*Ws-0*) and *ibs* Mutants.

Four-week-old plants were soil-drenched with either water or BABA to a concentration of 250 μ M. At 2 d after induction treatment, the plants were soil-drenched with NaCl to a concentration of 300 mM. Values presented are means (\pm SD) of the percentage of wilted plants per pot. Asterisks indicate statistically significant differences between control and BABA-treated plants (Student's *t* test; $\alpha = 0.05$; $n = 6$ to 8). Data are from a representative experiment that was repeated with similar results.

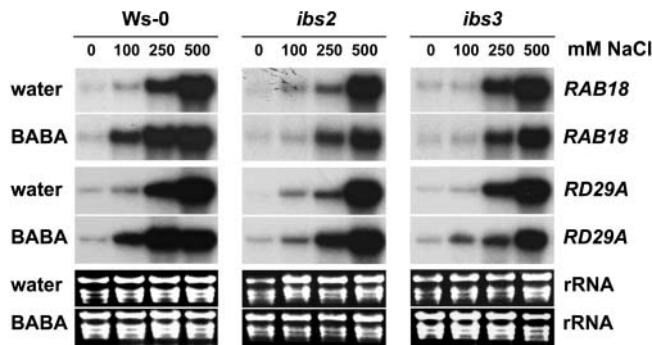


Figure 7. RNA Gel Blot Analysis of the ABA-Inducible Genes *RAB18* and *RD29A* in Wild-Type (Ws-0), *ibs2*, and *ibs3* Plants.

Four-week-old plants were treated with either water or BABA (250 μ M). Two days after induction treatment, the plants were treated with increasing concentrations of NaCl. Total RNA was extracted from leaves of ± 20 plants at 1 d after stress treatment with salt. RNA gel blots were hybridized with P^{32} -labeled probes against *RAB18* and *RD29A*. Ethidium bromide staining of the RNA gel (rRNA) was used to show equal loading. This experiment was repeated with similar results.

production upon treatment with BABA (Figure 1B). Apparently, multiple *ibs* mutations in different signaling pathways are needed to accomplish a complete block in BABA-induced sterility.

IBS1: A New Regulatory Gene in the Priming for SA-Dependent Resistance

The *ibs1* mutant carries a single T-DNA insertion at the 3'-end of a gene encoding a CDK-like protein (Figures 1A and 2). Additionally, two sequence-indexed mutants with a T-DNA insertion in the second exon of this gene displayed similar phenotypes as *ibs1* plants regarding BABA-induced sterility and BABA-IR. This demonstrates the involvement of *IBS1* in different plant responses to BABA. The predicted translation product of *IBS1* shares 80% sequence identity with another CDK-like protein kinase from Arabidopsis and 48% with CDC2C (At5g39420) from Arabidopsis (Figure 2). Most CDKs have been implicated in cell cycle regulation in association to their cyclin partners. However, some CDKs have been reported to control signal transduction pathways regulating gene transcription (Morgan, 1997; Barroco et al., 2003). Additionally, *IBS1* shares 44% sequence identity with the CRK1 protein from *B. vulgaris* (Figure 2). This protein kinase belongs to the family of calcium-dependent protein kinases, which have functions in a wide array of developmental and stress-related responses in plants (Hrabak et al., 2003). The N-terminal part of *IBS1* contains an N-terminal myristoylation sequence (Figure 2). *N*-myristoylation is an irreversible modification that affects the membrane binding properties of many different signal transduction proteins. Interestingly, Boisson et al. (2004) recently found that the *N*-myristoylated proteome of Arabidopsis contains a remarkably high fraction of cytoplasmic proteins related to defense signaling.

Evaluation of the defense-related phenotype of three allelic *ibs1* mutants revealed that *IBS1* controls BABA-IR against two biotrophic pathogens. The mutants failed to express BABA-IR

against *P. syringae* and were blocked in BABA-IR against *H. parasitica* upon treatment with low amounts of BABA. Strikingly, both defects in BABA-IR correlated with a defect in the priming for SA-dependent defenses: Upon infection by *P. syringae*, BABA-treated *ibs1* plants failed to show augmented expression of the SA-inducible *PR-1* gene (Figure 4), and during colonization by *H. parasitica*, BABA-treated *ibs1* plants lacked augmented formation of SA-dependent trailing necrosis (Figure 5B). Despite the defects in priming for SA-dependent defense reactions, *ibs1* plants did not show a phenotype consistent with a direct blockage of the SA-dependent defense pathway (Cao et al., 1994; Delaney et al., 1995; Nawrath and Métraux, 1999). For instance, we could not observe an enhanced disease susceptibility to *P. syringae* and *H. parasitica* in the different *ibs1* mutants (Figures 3 and 5; see Supplemental Figures 1 and 2 online). Furthermore, *ibs1* plants were not affected or delayed in the activation of the *PR-1* gene upon infection by *P. syringae* (Figure 4). These phenotypes indicate that mutations in *IBS1* do not directly affect the SA-dependent defense pathway, but rather block the priming for this pathway. We therefore propose that *IBS1* functions as a BABA-induced accelerator of the SA-dependent defense pathway, mediating the augmented expression of resistance against *P. syringae* and *H. parasitica* (Figure 8).

Involvement of Phosphoinositide Signaling in BABA-Induced Protection against *H. parasitica* and Salt Stress

The *ibs2* mutant contains a truncated T-DNA in the 5'-UTR of the *AtSAC1b* gene (Figure 1A). The sequence-indexed mutant *s-031243* with a T-DNA insertion at nearly the same locus displayed a similar level of BABA insensitivity, confirming the involvement of *AtSAC1b/IBS2* in BABA-induced sterility (Figures 1A and 1B). The predicted translation product of *AtSAC1b/IBS2* shows 50% identity with the SAC1 protein of yeast (Despres et al., 2003). This yeast protein functions as a polyphosphoinositide phosphatase, which converts phosphatidylinositol (PtdIns) 3-phosphate, PtdIns 4-phosphate, and PtdIns 3,5-bisphosphate into PtdIns (Guo et al., 1999). In yeast, null mutations of the *SAC1* gene result in enhanced accumulation of PtdIns(4)P and PtdIns(4,5)P₂, affecting protein trafficking and organization of the actin cytoskeleton (Hama et al., 1999; Foti et al., 2001; Schorr et al. 2001). Interestingly, Despres et al. (2003) recently demonstrated that transformation of a yeast *sac1* null-mutant with the Arabidopsis *AtSAC1b/IBS2* gene results in full complementation of the *sac1* mutant phenotype. This demonstrates that the *AtSAC1b/IBS2* protein in Arabidopsis fulfills similar cellular functions as the SAC1 protein in yeast. It is therefore plausible to assume that the *ibs2* mutations in the 5'-UTR of the *AtSAC1b/IBS2* gene cause phenotypes that are related to disruptions in the PtdIns-dependent signaling pathway.

The involvement of PtdIns signaling in plant stress responses to osmotic stress is well documented (Zhu, 2002). In Arabidopsis, osmotic stress leads to enhanced expression of *AtPLC1* encoding a PtdIns-specific phospholipase C (Hirayama et al., 1995). Moreover, application of salt has been shown to trigger a rapid accumulation of PtdIns(4,5)P₂ and inositol-1,4,5-trisphosphate (De Wald et al., 2001). Hence, osmotic stress stimulates the

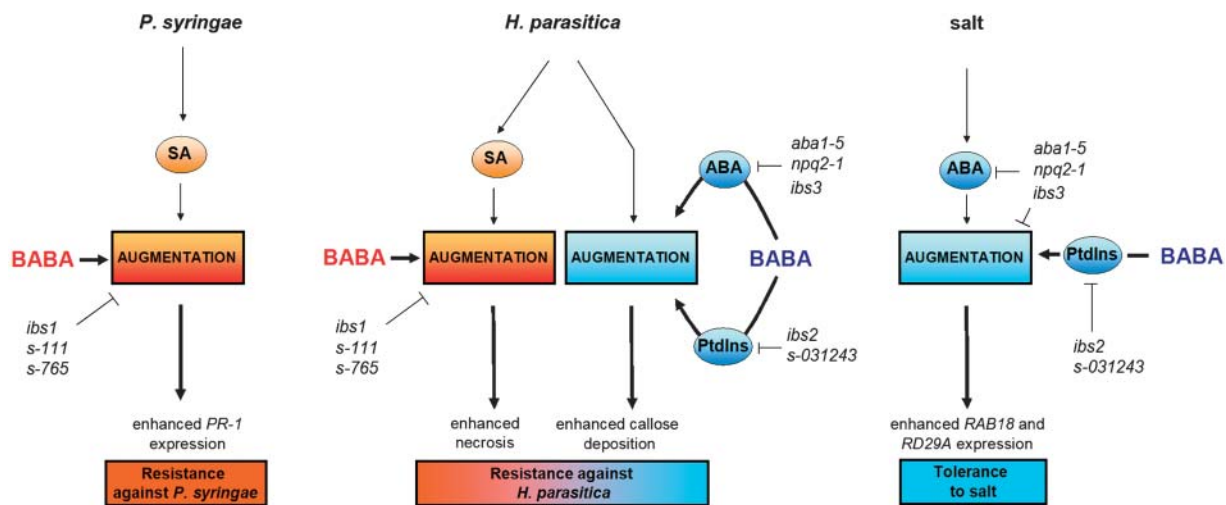


Figure 8. Model for the Priming Mechanisms behind BABA-IR against Different Biotic and Abiotic Stresses.

Infection by *P. syringae* and *H. parasitica* leads to activation of the SA-dependent defense pathway. Treatment with BABA primes for SA-dependent defenses, resulting in augmented expression of SA-dependent resistance during infection by *P. syringae* or *H. parasitica*. The expression of this BABA-IR is marked by enhanced expression of the *PR-1* gene and enhanced formation of trailing necrosis upon infection by *P. syringae* and *H. parasitica*, respectively. Infection by *H. parasitica* also activates a defense pathway that leads to callose deposition. Treatment with BABA generates a PtdIns- and ABA-dependent priming for this defense response, leading to augmented deposition of callose and enhanced resistance against *H. parasitica*. Salt stress activates an ABA-dependent defense response. Treatment with BABA triggers a PtdIns-dependent priming for ABA-dependent defenses, causing augmented expression of ABA-dependent defenses upon exposure to salt stress. This BABA-induced tolerance to salt is marked by enhanced expression of the ABA-inducible genes *RAB18* and *RD29A*.

PtdIns signaling pathway in Arabidopsis. Here, we have shown that two independent mutations in the 5'-UTR of the *AtSAC1b/IBS2* gene compromise the plant's ability to express BABA-induced protection against salt stress (Figure 6; see Supplemental Figure 3 online). This defect correlated with a defect in the priming for ABA-inducible gene expression (Figure 7), indicating that *AtSAC1b/IBS2* regulates the priming for ABA-dependent defenses. Together, these findings suggest that BABA primes for ABA-inducible defenses via a PtdIns-dependent signal transduction pathway. Subsequent exposure to salt stress results in augmented expression of ABA-dependent defense mechanisms, causing enhanced tolerance to salt (Figure 8).

PtdIns signaling has also been implicated in plant defense against pathogens. A rapid accumulation of inositol-1,4,5-trisphosphate has been observed in citrus infected with the fungus *Alternaria alternata* (Ortega and Perez, 2001). Furthermore, treatment of rice (*Oryza sativa*) with SA and jasmonic acid has been reported to rapidly induce the expression of a PtdIns-specific phospholipase C, which correlated with induced resistance against the blast fungus *Magnaporthe grisea* (Song and Goodman, 2002). Here, we showed that two independent mutations in the 5'-UTR of *AtSAC1b/IBS2* cause reduced levels of callose deposition during the expression of BABA-IR against *H. parasitica* (Figure 5; see Supplemental Figure 2 online). Hence, PtdIns signaling plays an important role in the augmented deposition of callose during expression of BABA-IR against *H. parasitica* (Figure 8). Because PtdIns signaling regulates the organization of the actin cytoskeleton in yeast (Caroni, 2001; Foti et al., 2001), it is tempting to speculate that PtdIns signaling also regulates cytoskeleton rearrangements in the plant cell during

infection by pathogenic fungi or oomycetes. These ultrastructural changes are thought to direct secretory vesicles to the sites of pathogen attack, mediating the delivery of the necessary substrate or synthetic machinery for callose production (Staiger, 2000). The finding that inhibitors of actin microfilament function reduce pathogen-induced callose deposition in barley (*Hordeum vulgare*) and cowpea (*Vigna unguiculata*) supports this hypothesis (Skalamera and Heath, 1996; Kobayashi et al., 1997).

ABA Regulates BABA-Induced Protection against Salt Stress and *H. parasitica*

The third mutant characterized, *ibs3*, contains a T-DNA insertion at 592 bp downstream of the stop codon of the *ABA1/IBS3* gene (Figure 1A). This gene encodes a zeaxanthin epoxidase, which mediates an essential step in the biosynthetic pathway of the stress hormone ABA (Koornneef et al., 1982; Zhu, 2002). Further characterization revealed that this mutant is also affected in BABA-IR against *H. parasitica* and BABA-induced protection against salt. Two other mutants in the *ABA1/IBS3* gene displayed similar phenotypes (see Supplemental Figures 2 and 3 online), indicating involvement of *ABA1/IBS3* in BABA-induced defense responses. Moreover, transforming the *ibs3* mutant with a genomic clone of *ABA1/IBS3* complemented for BABA-induced sterility and BABA-induced protection against salt (Figures 1C and 1D). Together, these findings strongly indicate that the *ibs3* phenotype is caused by a defect in the functioning of the *ABA1/IBS3* gene.

The failure of *ibs3* plants to express BABA-induced tolerance to salt correlated with an impaired priming for ABA-inducible

gene expression (Figures 6 and 7). This suggests that the augmented expression of ABA-dependent defenses plays an important role in the BABA-induced protection against salt. In addition, noninduced *ibs3* plants, like *aba1-5* and *npq2-1*, displayed enhanced levels of susceptibility to salt stress (Figure 6; see Supplemental Figure 3 online). Hence, all three mutations in *ABA1/IBS3* affect both basal and BABA-induced tolerance to salt. However, the mutant phenotype of *ibs3* was not entirely comparable to that of *aba1-5* and *npq2-1*. For instance, *ibs3* plants did not exhibit the enhanced susceptibility to drought that is typical for mutants *aba1-5* and *npq2-1* (data not shown). Furthermore, control-treated *ibs3* plants were not severely affected in the salt-induced activation of the ABA-inducible genes *RAB18* and *RD29A* (Figure 7). This suggests that the T-DNA insertion at the 3'-end of the *ABA1/IBS3* gene does not strongly affect the basal responsiveness to osmotic stress, but rather confers a regulatory defect that predominantly affects the augmented expression of ABA-dependent defenses (Figure 8).

Besides the well-established role of ABA in the regulation of plant responses to abiotic stress (Xiong et al., 2002; Zhu, 2002), there is increasing evidence that ABA is also involved in responses to pathogen attack. However, the exact role of ABA in pathogen resistance seems controversial. Audenaert et al. (2002) reported that ABA-treated tomato (*Lycopersicon esculentum*) showed enhanced levels of susceptibility to *B. cinerea*, whereas the ABA-deficient tomato mutant *sitiens* displayed enhanced resistance against this pathogen. In addition, Mohr and Cahill (2003) reported that treatment of Arabidopsis with ABA conferred partial loss of resistance against an avirulent isolate of *P. syringae* pv *tomato*. Contrary to these reports, Wiese et al. (2004) recently described a positive role for ABA in pathogen resistance. The authors showed that treatment of barley with ABA primed for papillae-mediated resistance against powdery mildew fungus (*Blumeria graminis* f sp *hordei*). In support of this, we reported previously that treatment with ABA triggers callose-mediated resistance in Arabidopsis against the necrotrophic pathogens *A. brassicicola* and *P. cucumerina* (Ton and Mauch-Mani, 2004). This BABA-IR was blocked in the Arabidopsis mutants *aba1-5* and *abi4-1*, which correlated with a defect in the priming for callose. These findings strongly indicate that ABA plays an important role in the regulation of rapid callose deposition during the early stages of fungal infection. In this study, we found that mutations in the ABA biosynthetic gene *ABA1/IBS3* affect the augmented deposition of callose and the level of BABA-IR against *H. parasitica* (Figure 5; see Supplemental Figure 2 online). Interestingly, these mutations did not affect the basal level of callose deposition in control-treated plants (Figure 5C; see Supplemental Figure 2 online). We therefore propose that ABA, like PtdIns, contributes to BABA-IR against *H. parasitica* by predominantly regulating the priming for callose (Figure 8).

BABA Primes for Different Defense Pathways Yielding Broad-Spectrum Protection against Biotic and Abiotic Stresses

It is evident from the data presented in this study that BABA induces resistance against a broad spectrum of biotic and abiotic stresses. We have identified three genes that are differ-

entially involved in the broad-spectrum protection by BABA-IR. Moreover, we showed that these genes regulate BABA-induced priming for different defense responses. Notably, the three *ibs* mutations did not directly affect defense signaling pathways, but blocked the priming for the corresponding defense response. This strongly suggests that priming for defense is essential for the expression of BABA-IR. In addition, this demonstrates that priming requires specific cellular signaling components.

Physiologically, priming provides an efficient mechanism to obtain broad-spectrum stress resistance. Plants that are primed to effectively resist biotic and abiotic stresses might not suffer from costly energy investments in defense mechanisms because their complete defense arsenal is not activated before stress exposure. Accordingly, plants in the primed state exhibit an enhanced defensive capacity against a wide range of stresses without harmful trade-off effects on commercially important traits such as growth and fruit set. Better knowledge of the priming mechanisms behind BABA-IR could provide valuable insights for generating crop varieties with an enhanced defensive capacity against biotic and abiotic stresses.

METHODS

Plant Lines

The *Arabidopsis thaliana* T-DNA collection used for the mutagenesis screen is in the background of accession Ws-0 and has been described by Feldmann (1991). Arabidopsis accession Col-0 was obtained from Lehle Seeds (Round Rock, TX), and the Col-0 mutants *aba1-5* and *npq2-1* were obtained from the Nottingham Arabidopsis Stock Centre (Nottingham, UK). The Col-0 mutant *npr1-1* and the Ws-0 transgenic Arabidopsis NahG line were kindly provided by X. Dong (Duke University, Durham, NC) and F. Mauch (University of Fribourg, Switzerland), respectively. The *IBS1* T-DNA insertion lines SAIL_634_B09 (*s-634*), SAIL_111_B09 (*s-111*), and SAIL_765_A05 (*s-765*) were obtained from the Arabidopsis T-DNA insertion collection of Syngenta (Research Triangle Park, NC) (Sessions et al., 2002). The *IBS2* T-DNA insertion line SALK_031243 (*s-031243*) was obtained from the Arabidopsis T-DNA insertion collection of the Salk Institute (Alonso et al., 2003). To select plants homozygous for the T-DNA insertion, gene-specific primers (forward and reverse) 5'-TTTAAATTGG-TAGTTGTATC-3' and 5'-CTAGCGGCGACCACTGTGAGA-3', 5'-CAAG-AGCGGGAAGAAGAGTAGTAG-3' and 5'-CCCAGCAAAAGTTCAAG-TGGAC-3', 5'-GGTAGTGAGTTGGGTAGCGATTG-3' and 5'-CAGTT-TGTGGGTGACCTCAGTTCT-3', and 5'-CCACTGAATTGAGTTGTTG-GGC-3' and 5'-CCAAACATGAAGCGGAGGAACC-3' were used for lines *s-634*, *s-111*, *s-765*, and *s-031243*, respectively. Plants yielding no PCR product with the gene-specific primers were subsequently tested for the presence of the T-DNA insertion, using the gene-specific forward primer in combination with the T-DNA left border specific primer 5'-TAGCATCT-GAATTCATAACCAATCTCGATACAC-3'.

Plant Growth Conditions and Cultivation of Pathogens

Plants for the mutagenesis screen were cultivated on a mixture of steam-sterilized commercial potting soil and perlite (3:1) at 60% RH under continuous light at $22 \pm 2^\circ\text{C}$ to promote flowering. For the induced resistance assays, seedlings were germinated on the same soil/perlite mixture and individually transferred to 33- or 150-mL pots when 2 weeks old. For the duration of the experiment, plants were maintained at 20°C day/ 18°C night temperature with 8.5 h of light per 24 h and 60% RH. *Hyaloperonospora parasitica* strains EMWA and WACO9 were

maintained on *Arabidopsis* accessions Ws-0 and Col-0, respectively. Conidiospores were obtained by washing the sporulating leaves in 10 mM MgSO₄, collected by centrifugation, and resuspended in 10 mM MgSO₄ to a final density of 5×10^4 conidiospores/mL. The virulent strain of *Pseudomonas syringae* pv *tomato* DC3000 (Whalen et al., 1991) was grown overnight at 28°C in liquid King's B medium (King et al., 1954).

DNA Gel Blot Analysis and Plasmid Rescue

Genomic DNA was isolated from 5-week-old plants according to Dellaporta et al. (1983). *Pst*I-, *Bam*HI-, and *Sal*I-digested DNA samples (2 µg) were electrophoresed on 1% (w/v) agarose gels, denatured, and transferred onto Hybond-N⁺ membranes (Amersham, Buckinghamshire, UK) by capillary transfer. Membranes were hybridized with different probes synthesized from three T-DNA regions (left and right borders and pBR322) by random primer labeling with [α -³²P]dCTP according to the supplier's instructions (Promega, Madison, WI) and subsequently exposed to X-Omat or Biomax films (Kodak, Rochester, NY). Based on the data of the DNA gel blots, plasmids from the inserted T-DNA from *ibs1*, *ibs2*, *ibs3*, and *ibs4* have been rescued according to Behringer and Medford (1992) and sequenced to identify flanking genomic DNA sequences.

RNA Gel Blot Analysis

Total RNA was extracted by homogenizing frozen leaf tissue in extraction buffer (0.35 M glycine, 0.048 N NaOH, 0.34 M NaCl, 0.04 M EDTA, and 4% [w/v] SDS; 1 mL/g leaf tissue). The homogenates were extracted with phenol and chloroform, and the RNA was precipitated using LiCl as described by Sambrook et al. (1989). For RNA gel blot analysis, 12.5 µg of RNA was denatured using glyoxal and DMSO (Sambrook et al., 1989). Subsequently, samples were electrophoretically separated on 1.5% agarose gels and blotted onto Hybond-N⁺ membranes by capillary transfer. The electrophoresis buffer and blotting buffer consisted of 10 and 25 mM sodium phosphate, pH 7.0, respectively. RNA gel blots were hybridized and washed as described previously (Pieterse et al., 1994) and exposed to X-Omat or Biomax films. DNA probes were labeled with [α -³²P]dCTP by random primer labeling according to the manufacturer's instructions (Promega). Probes to detect *RAB18* and *RD29A* transcripts were prepared by PCR using primers based on GenBank sequences *At5g52310* and *At5g66400*, respectively. Probes to detect *PR-1* transcripts were derived from a *PR-1* cDNA clone (Uknes et al., 1992). Equal loading was visualized by ethidium bromide staining of the rRNA.

Cloning of *IBS1* cDNA

A cDNA library of BABA-treated *Arabidopsis* (accession Col-0) was screened for *IBS1* cDNA, using a probe derived from PCR amplification of the seventh predicted exon of the genomic sequence of *IBS1* (Atg18670; forward primer, 5'-TCCCAGAAGTTTCAGAAC-3'; reverse primer, 5'-TGCCTTTTCTTCGCGC-3'). One positive clone was identified and sequenced. Construction of the cDNA library in λ Uni-ZAP XR, screening, and in vivo excision of the *IBS1* clone into *Escherichia coli* was performed according to the manufacturer's instructions (Stratagene, La Jolla, CA).

Construction of the *ibs3* Complementation Line *T-IBS3G*

The *ABA1/IBS3* genomic region (At5g67030) was amplified by high-fidelity PCR with gene-specific primers designed to include the 805-bp promoter region and the 2352-bp region downstream of the stop codon (forward primer, 5'-GTGAGCTCTAGCCTCTAGGCTATGG-3'; reverse primer, 5'-CAGGTACCCCAACCATGTTACAATATC-3'). The resulting 6.5-kb fragment was cloned in the plasmid pCR2.1-TOPO (Invitrogen, Carlsbad, CA), digested by *Sac*I and *Kpn*I, and subcloned into the binary vector pCAMBIA1300. *Arabidopsis ibs3* plants were transformed using

the *Agrobacterium tumefaciens*-mediated flower dipping method (Clough and Bent, 1998). T2 and T3 plants were selected on 0.5% (v/w) MS plates containing 30 µg/mL of hygromycin. Line *T-IBS3G* was selected from the T4 generation and tested for BABA-induced sterility and BABA-induced tolerance to salt stress.

Mutagenesis Screen and BABA-Induced Sterility Assays

T-DNA-mutagenized plants (Feldmann, 1991) were cultivated under continuous light to accelerate flowering. Plants were soil-drenched to 300 µM BABA starting at 4 weeks after sowing. One to two weeks after the onset of flowering, plants were screened for silique formation. Seeds were collected from plants that were still capable of producing full siliques after repeated treatment with BABA. To confirm putative *ibs* phenotypes, 2-week-old seedlings were transferred to 150-mL pots (four plants per pot) and soil-drenched with BABA to 300 µM starting at 4 weeks after sowing. To quantify BABA-induced sterility, the average number of seeds/silique was determined in 6-week-old plants.

P. syringae Bioassays

Two-week-old seedlings were individually transferred to 33-mL pots. Five-week-old plants were soil-drenched with water (control) or BABA to a final concentration of 250 µM. Two days after chemical treatment, plants were inoculated by dipping the leaves in a suspension of virulent *P. syringae* pv *tomato* DC3000, containing 1.5×10^7 colony-forming units mL⁻¹ in 10 mM MgSO₄ and 0.01% (v/v) Silwet L-77. Three days after challenge inoculation, the percentage of leaves with symptoms was determined per plant ($n = 20$ to 25). Leaves showing necrotic or water-soaked lesions surrounded by chlorosis were scored as diseased. Bacterial growth in the leaves was determined by collecting replicate samples from five plants per genotype. Approximately 30 min after challenge inoculation and 3 d later, leaf samples were collected, weighed, rinsed in water, and homogenized in 10 mM MgSO₄. Serial dilutions were plated on selective King's medium B agar supplemented with 100 mg/L cycloheximide and 50 mg/L rifampicin. After incubation at 28°C for 2 d, the number of rifampicin-resistant colony-forming units per gram of infected leaf tissue was determined, and bacterial proliferation over the 3-d time interval was calculated.

H. parasitica Bioassays

Two-week-old seedlings were transferred to 150-mL pots (15 plants per pot) and 1 week later soil-drenched with BABA to the indicated concentrations. Two days after BABA induction, plants were challenge inoculated with *H. parasitica* strain EMWA or WACO9 by spraying with 10 mM MgSO₄ containing 5×10^4 conidiospores per mL to immanent runoff. After inoculation, the plants were kept at 100% RH for 1 d to ensure infection. Five days after infection, plants were placed back to 100% RH for 1 d to induce sporulation. Disease symptoms were scored for ~200 leaves per treatment at 8 d after inoculation. Disease rating was expressed as intensity of disease symptoms and pathogen sporulation on each leaf: I, no sporulation; II, <50% of the leaf area covered by sporangia; III, >50% of the leaf area covered by sporangia; IV, heavily covered with sporangia, with additional chlorosis and leaf collapse. For visualizing trailing necrosis, infected leaves were stained with lactophenol trypan-blue and examined microscopically at 5 d after inoculation as described by Koch and Slusarenko (1990). For quantification of callose deposition, leaves were collected at 2 d after inoculation and incubated overnight in 95% ethanol. Destained leaves were washed in 0.07 M phosphate buffer, pH 9, incubated for 15 min in 0.07 M phosphate buffer containing 0.005% calcofluor (fluorescent brightener; Sigma-Aldrich, St. Louis, MO) and 0.01% aniline-blue (water blue; Fluka, Buchs, Switzerland), and subsequently washed in 0.07 M phosphate buffer containing only 0.01%

aniline-blue to discard excess amounts of the calcofluor. Observations were performed with an epifluorescence microscope with UV filter (band-pass 340 to 380 nm, long-path 425 nm). Callose depositions were quantified by determining the percentage of callose-inducing conidiospores per infected leaf.

Salt Stress Bioassays

Two-week-old seedlings were transferred to 150-mL pots (15 plants per pot) and 2 weeks later soil-drenched with BABA to a final concentration of 250 μ M. Two days after BABA induction, plants were soil-drenched with NaCl to 300 mM final concentration. After salt treatment, plants were not watered for the duration of the experiment. Salt stress was quantified by determining the average percentage of wilted plants per pot ($n = 8$ to 10).

Sequence data from this article have been deposited with the EMBL/GenBank data libraries under accession numbers At1G74330 and CDC2C.

ACKNOWLEDGMENTS

We thank Felix Mauch for critically reading the manuscript. This work was supported by a grant from the National Center of Competence on Plant Survival in Natural and Agricultural Ecosystems and Swiss National Foundation Grant 31-064024 to B.M.-M., Swiss National Foundation Grant 3100A0-104224-1 to J.-P.M., and Netherlands Organization for Scientific Research Grant 863.04.019 to J.T.

REFERENCES

- Alonso, J.M., et al.** (2003). Genome-wide insertional mutagenesis of *Arabidopsis thaliana*. *Science* **301**, 653–657.
- Audenaert, K., De Meyer, G.B., and Höfte, M.M.** (2002). Abscisic acid determined basal susceptibility of tomato to *Botrytis cinerea* and suppresses salicylic acid-dependent signaling mechanisms. *Plant Physiol.* **128**, 491–501.
- Barroco, R.M., De Veylder, L., Magyar, Z., Engler, G., Inze, D., and Mironov, V.** (2003). Novel complexes of cyclin-dependent kinases and a cyclin-like protein from *Arabidopsis thaliana* with a function unrelated to cell division. *Cell. Mol. Life Sci.* **60**, 401–412.
- Behringer, F.J., and Medford, J.I.** (1992). A plasmid rescue technique for the recovery of plant DNA disrupted by T-DNA insertion. *Plant Mol. Biol. Rep.* **10**, 190–194.
- Boisson, B., Giglione, C., and Meinel, T.** (2003). Unexpected protein families including cell defense components feature in the N-myristoylome of a higher eukaryote. *J. Biol. Chem.* **44**, 43418–43429.
- Cao, H., Bowling, S.A., Gordon, A.S., and Dong, X.** (1994). Characterization of an *Arabidopsis* mutant that is nonresponsive to inducers of systemic acquired resistance. *Plant Cell* **6**, 1583–1592.
- Caroni, P.** (2001). Actin cytoskeleton regulation through modulation of PI (4,5) P₂ rafts. *EMBO J.* **20**, 4332–4336.
- Clough, S.J., and Bent, A.F.** (1998). Floral dip: A simplified method for *Agrobacterium*-mediated transformation of *Arabidopsis thaliana*. *Plant J.* **16**, 735–743.
- Cohen, Y.R.** (2002). β -Amino-butyric acid-induced resistance against plant pathogens. *Plant Dis.* **86**, 448–457.
- Conrath, U., Pieterse, C.M.J., and Mauch-Mani, B.** (2002). Priming in plant-pathogen interactions. *Trends Plant Sci.* **7**, 210–216.
- Dean, R.A., and Kuc, J.** (1987). Rapid lignification in response to wounding and infection as a mechanism for induced systemic protection in cucumber. *Physiol. Mol. Plant Pathol.* **31**, 69–81.
- Delaney, T.P., Friedrich, L., and Ryals, J.** (1995). *Arabidopsis* signal transduction mutant defective in chemically and biologically induced systemic disease resistance. *Proc. Natl. Acad. Sci. USA* **92**, 6602–6606.
- Dellaporta, S.L., Wood, J., and Hicks, J.B.** (1983). A plant DNA miniprep: Version II. *Plant Mol. Biol. Rep.* **1**, 19–21.
- Despres, B., Bouissonnie, F., Wu, H.J., Gomord, V., Guilleminot, J., Grellet, F., Berger, F., Delseny, M., and Devic, M.** (2003). Three SAC1-like genes show overlapping patterns of expression in *Arabidopsis* but are remarkably silent during embryo development. *Plant J.* **34**, 293–306.
- DeWald, D.B., Torabinejad, J., Jones, C.A., Shope, J.C., Cangelosi, A.R., Thompson, J.E., Prestwich, G.D., and Hama, H.** (2001). Rapid accumulation of phosphatidylinositol 4,5-bisphosphate and inositol 1,4,5-trisphosphate correlates with calcium mobilization in salt-stressed *Arabidopsis*. *Plant Physiol.* **126**, 759–769.
- Feldmann, K.A.** (1991). T-DNA insertion mutagenesis in *Arabidopsis*: Mutational spectrum. *Plant J.* **1**, 71–82.
- Foti, M., Audhya, A., and Emr, S.D.** (2001). Sac1 lipid phosphatase and Stt4 phosphatidylinositol 4-kinase regulate a pool of phosphatidylinositol 4-phosphate that functions in the control of the actin cytoskeleton and vacuole morphology. *Mol. Biol. Cell* **12**, 2396–2411.
- Gaffney, T.P., Friedrich, L., Vernooij, B., Negrotto, D., Neye, G., Uknes, S., Ward, E., Kessmann, H., and Ryals, J.** (1993). Requirement of salicylic acid for the induction of systemic acquired resistance. *Science* **261**, 754–756.
- Guo, S.L., Stolz, L.E., Lemrow, S.M., and York, J.D.** (1999). SAC1-like domains of yeast SAC1, INP52, and INP53 and of human synaptojanin encode polyphosphoinositide phosphatases. *J. Biol. Chem.* **274**, 12990–12995.
- Hama, H., Schnieders, E.A., Thorner, J., Takemoto, J.Y., and DeWald, D.B.** (1999). Direct involvement of phosphatidylinositol 4-phosphate in secretion in the yeast *Saccharomyces cerevisiae*. *J. Biol. Chem.* **274**, 34294–34300.
- Hayes, M.P., Enterline, J.C., Gerrard, T.L., and Zoon, K.C.** (1991). Regulation of the interferon-production by human monocytes: Requirements for priming for lipopolysaccharide-induced production. *J. Leukoc. Biol.* **50**, 176–181.
- Hirayama, T., Ohto, C., Mizoguchi, T., and Shinozaki, K.** (1995). A gene encoding a phosphatidylinositol-specific phospholipase-C is induced by dehydration and salt stress in *Arabidopsis thaliana*. *Proc. Natl. Acad. Sci. USA* **92**, 3903–3907.
- Hrabak, E.M., et al.** (2003). The *Arabidopsis* CDPK-SnRK superfamily of protein kinases. *Plant Physiol.* **132**, 660–680.
- Jakab, G., Cottier, V., Toquin, V., Rigoli, G., Zimmerli, L., Métraux, J.-P., and Mauch-Mani, B.** (2001). β -Aminobutyric acid-induced resistance in plants. *Eur. J. Plant Pathol.* **107**, 29–37.
- Katz, V.A., Thulke, O.U., and Conrath, U.** (1998). A benzothiadiazole primes parsley cells for augmented elicitation of defense responses. *Plant Physiol.* **117**, 1333–1339.
- Kauss, H., Krause, K., and Jeblick, W.** (1992b). Methyl jasmonate conditions parsley suspension cells for increased elicitation of phenylpropanoid defense responses. *Biochem. Biophys. Res. Commun.* **189**, 304–308.
- Kauss, H., Theisinger-Hinkel, E., Mindermann, R., and Conrath, U.** (1992a). Dichloroisonicotinic and salicylic acid, inducers of systemic acquired resistance, enhance fungal elicitor responses in parsley cells. *Plant J.* **2**, 655–660.
- King, E.O., Ward, M.K., and Raney, D.E.** (1954). Two simple media for the demonstration of pyocyanin and fluorescein. *J. Lab. Clin. Med.* **44**, 301–307.

- Kobayashi, I., Kobayashi, Y., Funaki, Y., Fujimoto, S., Takemoto, T., and Kunoh, H.** (1997). Dynamic reorganization of microfilaments and microtubules is necessary for the expression of non-host resistance in barley coleoptile cells. *Plant J.* **11**, 525–537.
- Koch, E., and Slusarenko, A.** (1990). Arabidopsis is susceptible to infection by a downy mildew fungus. *Plant Cell* **2**, 437–445.
- Kohler, A., Schwinding, S., and Conrath, U.** (2002). Benzothiadiazol-induced priming for potentiated responses to pathogen infection, wounding, and infiltration of water into leaves requires the NPR1/NIM1 gene in Arabidopsis. *Plant Physiol.* **128**, 1046–1056.
- Koornneef, M., Jorna, M.L., Derswan, D.L.C.B., and Karszen, C.M.** (1982). The isolation of abscisic-acid (ABA) deficient mutants by selection of induced revertants in non-germinating gibberellin sensitive lines of *Arabidopsis thaliana*. *Theor. Appl. Genet.* **61**, 385–393.
- Kovats, K., Binder, A., and Hohl, H.R.** (1991a). Cytology of systemic induced resistance of cucumber to *Colletotrichum lagenarium*. *Planta* **183**, 484–490.
- Kovats, K., Binder, A., and Hohl, H.R.** (1991b). Cytology of systemic induced resistance of tomato to *Phytophthora infestans*. *Planta* **183**, 491–496.
- Mauch-Mani, B., and Métraux, J.-P.** (1998). Salicylic acid and systemic acquired resistance to pathogen attack. *Ann. Bot.* **82**, 535–540.
- Mohr, P.G., and Cahill, D.M.** (2003). Abscisic acid influences the susceptibility of *Arabidopsis thaliana* to *Pseudomonas syringae* pv. *tomato* and *Peronospora parasitica*. *Functional Plant Biol.* **30**, 461–469.
- Moran, T.V., and Walker, J.C.** (1993). Molecular cloning of 2 novel protein-kinase genes from *Arabidopsis thaliana*. *Biochim. Biophys. Acta* **1216**, 8–14.
- Morgan, D.O.** (1997). Cyclin-dependent kinases: Engines, clocks, and microprocessors. *Annu. Rev. Cell Dev. Biol.* **13**, 261–291.
- Mur, L.A., Taylor, G., Warner, S.A.J., Sugars, J.M., White, R.F., and Draper, J.** (1996). Salicylic acid potentiates defense gene expression in tissue exhibiting acquired resistance to pathogen attack. *Plant J.* **9**, 559–571.
- Nawrath, C., and Métraux, J.-P.** (1999). Salicylic acid induction-deficient mutants of Arabidopsis express *PR-2* and *PR-5* and accumulate high levels of camalexin after pathogen inoculation. *Plant Cell* **11**, 1393–1404.
- Nishimura, M.T., Stein, M., Hou, B.H., Vogel, J.P., Edwards, H., and Somerville, S.C.** (2003). Loss of a callose synthase results in salicylic acid-dependent disease resistance. *Science* **301**, 969–972.
- Niyogi, K.K., Grossman, A.R., and Bjorkman, O.** (1998). Arabidopsis mutants define a central role for the xanthophyll cycle in the regulation of photosynthetic energy conversion. *Plant Cell* **10**, 1121–1134.
- Ortega, X., and Perez, L.M.** (2001). Participation of the phosphoinositide metabolism in the hypersensitive response of *Citrus limon* against *Alternaria alternata*. *Biol. Res.* **34**, 43–50.
- Pieterse, C.M.J., Derksen, A.-M.C.E., Folders, J., and Govers, F.** (1994). Expression of the *Phytophthora infestans* *ipiB* and *ipiO* genes in planta and in vitro. *Mol. Gen. Genet.* **244**, 269–277.
- Pieterse, C.M.J., Van Wees, S.C.M., Van Pelt, J.A., Knoester, M., Laan, R., Gerrits, H., Weisbeek, P.J., and Van Loon, L.C.** (1998). A novel signaling pathway controlling induced systemic resistance in Arabidopsis. *Plant Cell* **10**, 1571–1580.
- Sambrook, J., Fritsch, E.F., and Maniatis, T.** (1989). *Molecular Cloning: A Laboratory Manual*, 2nd Ed. (Cold Spring Harbor, NY: Cold Spring Harbor Laboratory Press).
- Sessions, A., et al.** (2002). A high-throughput Arabidopsis reverse genetics system. *Plant Cell* **14**, 2985–2994.
- Schorr, M., Then, A., Tahirovic, S., Hug, N., and Mayinger, P.** (2001). The phosphoinositide phosphatase Sac1p controls trafficking of the yeast Chs3p chitin synthase. *Curr. Biol.* **11**, 1421–1426.
- Shah, J., Tsui, F., and Klessig, D.F.** (1997). Characterization of a salicylic acid-insensitive mutant (*sai1*) of *Arabidopsis thaliana* identified in a selective screen utilizing the SA-inducible expression of the *TMS2* gene. *Mol. Plant Microbe Interact.* **10**, 69–78.
- Silverman, P., Seskar, M., Kanter, D., Schweizer, P., Métraux, J.-P., and Raskin, I.** (1995). Salicylic acid in rice. Biosynthesis, conjugation, and possible role. *Plant Physiol.* **108**, 633–639.
- Skalamera, D., and Heath, M.C.** (1996). Cellular mechanisms of callose deposition in response to fungal infection or chemical damage. *Can. J. Bot.* **74**, 1236–1242.
- Skipp, R.A., and Deverall, B.J.** (1973). Studies on cross-protection in anthracnose disease of bean. *Physiol. Plant Pathol.* **2**, 357–374.
- Song, F.M., and Goodman, R.M.** (2002). Molecular cloning and characterization of a rice phosphoinositide-specific phospholipase C gene, OsPI-PLC1, that is activated in systemic acquired resistance. *Physiol. Mol. Plant Pathol.* **61**, 31–40.
- Staiger, C.J.** (2000). Signalling to the actin cytoskeleton in plants. *Annu. Rev. Plant Physiol. Plant Mol. Biol.* **51**, 257–288.
- Sticher, L., Mauch-Mani, B., and Métraux, J.-P.** (1997). Systemic acquired resistance. *Annu. Rev. Phytopathol.* **35**, 235–270.
- Ton, J., and Mauch-Mani, B.** (2004). β -Amino-butyric acid-induced resistance against necrotrophic pathogens is based on ABA-dependent priming for callose. *Plant J.* **38**, 119–130.
- Ton, J., Van Pelt, J.A., Van Loon, L.C., and Pieterse, C.M.J.** (2002). Differential effectiveness of salicylate-dependent and jasmonate/ethylene-dependent induced resistance in Arabidopsis. *Mol. Plant Microbe Interact.* **15**, 27–34.
- Uknes, S., Mauch-Mani, B., Moyer, M., Potter, S., Williams, S.C., Dincher, S., Chandler, D., Slusarenko, A., Ward, E., and Ryals, J.** (1992). Acquired resistance in Arabidopsis. *Plant Cell* **4**, 645–656.
- Van Loon, L.C.** (1997). Induced resistance in plants and the role of pathogenesis-related proteins. *Eur. J. Plant Pathol.* **103**, 753–765.
- Whalen, M.C., Innes, R.W., Bent, A.F., and Staskawicz, B.J.** (1991). Identification of *Pseudomonas syringae* pathogens of Arabidopsis and a bacterial locus determining avirulence on both Arabidopsis and soybean. *Plant Cell* **3**, 49–59.
- Wiese, J., Kranz, T., and Schubert, S.** (2004). Induction of pathogen resistance in barley by abiotic stress. *Plant Biol.* **6**, 529–536.
- Wyatt, G.R., Braun, R.P., and Zhang, J.** (1996). Priming effect in gene activation by juvenile hormone in locust fat body. *Arch. Insect Biochem. Physiol.* **32**, 633–640.
- Xiong, L.M., Schumaker, K.S., and Zhu, J.-K.** (2002). Cell signaling during cold, drought, and salt stress. *Plant Cell* **14** (suppl.), S165–S183.
- Zhu, J.K.** (2002). Salt and drought stress signal transduction in plants. *Annu. Rev. Plant Biol.* **53**, 247–273.
- Zimmerli, L., Jakab, G., Métraux, J.-P., and Mauch-Mani, B.** (2000). Potentiation of pathogen-specific defense mechanisms in Arabidopsis by β -aminobutyric acid. *Proc. Natl. Acad. Sci. USA* **97**, 12920–12925.
- Zimmerli, L., Métraux, J.-P., and Mauch-Mani, B.** (2001). β -Amino-butyric acid-induced protection of Arabidopsis against the necrotrophic fungus *Botrytis cinerea*. *Plant Phys.* **126**, 517–523.