

MR MOE BAKHTIARI (Orcid ID : 0000-0002-2363-7878)

DR SERGIO RASMANN (Orcid ID : 0000-0002-3120-6226)

Article type : Regular Manuscript

Ecological convergence of secondary phytochemicals along elevational gradients

Moe Bakhtiari^{1,3}, Gaétan Glauser², Emmanuel Defossez¹, Sergio Rasmann^{1*}

¹Institute of Biology, University of Neuchâtel, Rue-Emile Argand 11, 2000 Neuchâtel, Switzerland

²Neuchâtel Platform of Analytical Chemistry (NPAC), Avenue de Bellevaux 51, 2000 Neuchâtel, Switzerland

³Department of Integrative Biology, University of California, Berkeley, CA 94720, United States

ORCID ID

MB: 0000-0002-2363-7878

GG: 0000-0002-0983-8614

ED: 0000-0002-3279-9190

SR: 0000-0002-3120-6226

* Correspondence: sergio.rasmann@unine.ch, Tel: 0041 32 718 23 37

Received: 17 February 2020

Accepted: 11 September 2020

Running title: Phytochemical convergence along elevation

This article has been accepted for publication and undergone full peer review but has not been through the copyediting, typesetting, pagination and proofreading process, which may lead to differences between this version and the [Version of Record](#). Please cite this article as [doi: 10.1111/NPH.16966](https://doi.org/10.1111/NPH.16966)

This article is protected by copyright. All rights reserved

Summary

- Biologists still strive to identify the ecological and evolutionary drivers of phytochemical variation that mediate biotic interactions. We hypothesized that plant species growing at sites characterized by high herbivore pressure would converge to produce highly toxic blends of secondary metabolites, independent of phylogenetic constraints.
- To address the role of shared evolutionary history and ecological niches in driving variation in plant phytochemistry, we combined targeted metabolomics with insect herbivore bioassays and with a set of growth-related traits of several *Cardamine* species growing along the entire elevational gradient of the Alps.
- We observed that *Cardamine* phytochemical profiles grouped according to previously-established growth form categorizations within specific abiotic conditions, independently of phylogenetic relationship. We also showed that novel indices summarizing functional phytochemical diversity better explain plant resistance against chewing and sap-feeding herbivores than classic diversity indices.
- We conclude that multiple functional axes of phytochemical diversity should be integrated with the functional axis of plant growth forms to study phenotypic convergence along large-scale ecological gradients.

Keywords: alpine environment, evolution of plant defences, plant growth-defence syndromes, glucosinolates, specialist versus generalist herbivores, climatic gradient.

Introduction

Phytochemical diversity, or the richness and abundance of the secondary compounds produced by plants, is a key axis of the functional phenotype that affects plant survival within its biotic and abiotic environment (Jones & Firn, 1991; Romeo *et al.*, 1996; Hunter, 2016). Ecologists still struggle to understand, not only the origin of phytochemical diversity, but also to quantify the consequences of ecologically-relevant dimensions of phytochemical diversity (Richards *et al.*, 2015), and how the ecologically-relevant dimensions of phytochemical diversity relate to the functional axis of plant growth form (Díaz *et al.*, 2016; Durán *et al.*, 2019). The overall assumption is that a plant's phytochemical make-up is the result of its evolutionary history (Becerra, 1997; Futuyma & Agrawal, 2009b), as well as its adaptations to the environment (Coley *et al.*, 1985; Fine *et al.*, 2004; Defosse *et al.*, 2018). Several ecological and evolutionary hypotheses have been proposed for explaining variation in phytochemical diversity, including the co-evolutionary hypothesis (Ehrlich & Raven, 1964), the screening hypothesis (Firn & Jones, 2003) and the resource availability hypothesis (Coley *et al.*, 1985). The aim of this study is to merge these hypotheses in order to explore how phytochemical phenotypes covary with plant growth form-related traits, across closely-related species that have colonized broad-scale climatic gradients.

From a co-evolutionary perspective, the concept of an arms race between plants and herbivores has been proposed for explaining the ever-increasing diversity of plant secondary compounds over evolutionary time (Ehrlich & Raven, 1964). The co-evolutionary model suggests that herbivores, in particular insects, impose strong selection pressure on plants to evolve novel key adaptations for escaping their enemies. Therefore, a phylogenetic escalation for more, and more potent, phytochemical defence traits should be observed as lineages diversify (Vermeij, 1994; Farrell & Mitter, 1998). For instance, it was shown that parsnip plants evolved more complex angular forms of furanocoumarins from more simple linear furanocoumarins (Berenbaum & Feeny, 1981), or that more complex forms of cardenolides in milkweeds (*Asclepias* spp.) have emerged from more simple forms as the consequence of the co-evolution with their associated cerambycid beetles in the genus *Tetraopes* (Farrell & Mitter, 1998). Accordingly, co-evolutionary theory predicts that the presence of diverse forms of toxic phytochemicals in plants should depend, at least partially, on the species evolutionary history, with more recently-derived species bearing more potent phytochemical profiles than ancestrally-derived species, and second, that more closely related

species should be more similar in their phytochemical make-up than distantly-related species (Agrawal *et al.*, 2009).

Along the same lines, the screening hypothesis proposes that phytochemical diversity is maintained because it increases plants' resistance against both generalist and specialist herbivores (Lewinsohn & Gijzen, 2009; Ali & Agrawal, 2012). Accordingly, Richards *et al.* (2015) showed that within the genus *Piperaceae* high phytochemical diversity is associated with high diversity of herbivores, but also with lower herbivore damage, indeed highlighting a positive effect of phytochemical diversity in increasing resistance against herbivores. Two mechanisms have been proposed for how phytochemical diversity could favour plant resistance against herbivores. First, with high phytochemical production, a plant is more likely to contain a potent compound that is effective against a major herbivore, cumulatively creating a selective advantage within a population (Firn & Jones, 1996). For instance, only a few of the 100-plus gibberellins have a known biological activity, but those few that are active are potent at nano molar amounts (Fischbach & Clardy, 2007). However, Berenbaum *et al.* (1991) found that furanocoumarins in *Pastinaca sativa* are all equally and effectively toxic to a wide variety of herbivores. Second, high levels of phytochemical diversity might result in effective combinations of compounds that work synergistically against herbivores (Berenbaum & Neal, 1985; Rasmann & Agrawal, 2009; Richards *et al.*, 2012), such as when the impact of nicotine on the generalist *Spodoptera exigua* caterpillars is enhanced by proteinase inhibitors in leaves of wild tobacco plants (Steppuhn & Baldwin, 2007).

Altogether, the screening hypothesis indicates that selection should favour higher levels of phytochemical diversity, particularly in habitats where herbivore pressure is high. Within this framework, it has been long postulated that because warmer and more stable tropical or lowland environments support higher levels of plant-herbivore interactions (Dobzhansky, 1950; Schemske, 2009), this should lead to increased defence mechanisms compared to colder and less stable environments such as temperate locations or high elevation (Coley & Barone, 1996). Nevertheless, reviews on the topic have also shown contrasting patterns of defence investment along both latitudinal (Moles *et al.*, 2011) and elevational gradients (Rasmann *et al.*, 2014b). This could be explained by other factors also influencing a plant defensive phytochemical make-up. For instance, the resource availability hypothesis (Coley *et al.*, 1985) states that environmental

resources, such as soil nutrients, dictate how much a plant can invest in growth and in defences. Specifically, it was predicted, and later shown, that tropical plants growing in resource-poor sandy soils, grow more slowly and are more defended compared to their congeners that live in the nearby resource-rich clay soils (Fine *et al.*, 2004). Similarly, alpine *Cardamine* (Brassicaceae) species, living in resource poor soils, produce higher quantities of secondary metabolites (glucosinolates) than their low-elevation congeners (Pellissier *et al.*, 2016; Defosseze *et al.*, 2018). Although growth-defence trade-off have been investigated and confirmed using standard metrics of chemical defence, including the total abundance of compounds, or the number of molecules (Endara & Coley, 2011), exploring growth-defence trade-offs using other aspects of chemical toxicity, for instance including functional chemical diversity would improve resolution for understanding large-scale patterns in plant defence (Table 1). For instance, it was recently reported that specific dimensions of phytochemical diversity, such as alpha and beta diversity, exhibit variable effects on herbivore performance, indicating that not all measures of phytochemical diversity have similar and generalizable effects (Glassmire *et al.*, 2020). Accordingly, a holistic approach that encompasses environmental gradients, and their biotic (i.e., herbivore pressure) and abiotic (i.e., climate) correlates, within a phylogenetic comparative framework is needed to tease apart the intricate processes generating the multifaceted chemical diversity in plants.

To this end, we performed comparative analyses of several *Cardamine* species growing along the elevation gradient of the Alps. All *Cardamine* plants have been shown to produce a wide array of glucosinolates (hereafter referred to as GSLs) (Pellissier *et al.*, 2016). GSLs are sulphur- and nitrogen-containing plant secondary metabolites that, upon tissue disruption, undergo a myrosinase-catalysed hydrolysis generating a variety of by-products, including nitriles, isothiocyanates, thiocyanates, oxazolidine-2-thione, and indole, that are toxic to both specialist and generalist insect herbivores (van Dam *et al.*, 2009). Our previous work on the *Cardamine* system demonstrated that alpine species produce higher total amounts of GSLs at the constitutive level, but are less inducible than their low-elevation counterparts (Defosseze *et al.*, 2018).

However, we here suggest that only looking at total amounts is limited in scope, while exploring the multiple metrics of the diversity of such compounds across species, growth-forms and habitat types will provide a broader perspective on the evolution of chemical defences across ecological gradients. We specifically asked: 1) does variation in GSL diversity across species converge with plant species adaptation to their specific environment, or is phytochemical diversity variation

constraint due to shared ancestry? Since along the elevation gradient of the Alps, similar habitats should generate similar types and levels of herbivory (Hodkinson, 2005), we predicted that adaptation to a specific environment, not only shapes the plant growth phenotype, but also structures a similar chemical phenotype. On the opposite, we predicted to observe phylogenetic signal for GSL diversity, meaning that that closely related species are more similar in their phytochemical make-up than distant-related species. 2) How are different metrics of phytochemical diversity (Table 1) related to plant-herbivore interaction? Because each metric of phytochemical diversity can only capture a fraction of the chemical complexity in plants, we predicted that not all metrics of phytochemical diversity similarly predict plant resistance against specialist and generalist herbivores (Wetzel & Whitehead, 2020). With this work, we thus expand on the ecological and evolutionary processes that drive and maintain phytochemical diversity across space and time, and newly integrate functional axes of phytochemical diversity with the functional axis of plant growth forms.

Materials and Methods

Plant species natural history

In order to assess natural variation in constitutive plant chemical defences along elevational gradients, we sampled 14 species of *Cardamine*, out of the 19 currently growing in Switzerland (Aeschimann *et al.*, 2004). Together, all species encompass almost a 3000 m elevational gradient of the Alpine ecosystem. During the radiation of the group, species have colonized a wide range of habitats, including dry and wet alpine meadows, forests and riverbanks, and growing between 300 m above sea level (m a.s.l.) (e.g. *C. bulbifera*) and more than 3000 m a.s.l. (e.g. *C. alpina*). In the field *Cardamine* plants are predominantly attacked by leaf chewers such as Pieridae butterflies, flea beetles, aphids, and slugs (Rasmann S., personal observations), and previous work has highlighted a steady decline in herbivore damage with elevation (Pellissier *et al.*, 2016; Defosse *et al.*, 2018). The phylogenetic relationships between plants was pruned from a well-resolved and dated phylogeny of European plant species (Durka & Michalski, 2012) using the *ape* package (Paradis *et al.*, 2004).

Insect species

To measure plant resistance, we used the large cabbage butterfly *Pieris brassicae* (Lepidoptera: Pieridae) and the African cotton leaf worm *Spodoptera littoralis* (Lepidoptera: Noctuidae) as

specialist and generalist chewing herbivore insects, respectively. *P. brassicae* is a specialist herbivore that feeds exclusively on plants producing GSLs, especially on species of the Brassicaceae (Chew, 1988), which act as oviposition and feeding stimulants for specialist herbivores (Huang *et al.*, 1994). The caterpillars used in this experiment originated from a rearing culture on *Brassica rapa* ssp. *chinensis* (Brassicaceae). *S. littoralis* is a generalist herbivore, known to feed on species belonging to more than forty families of plants (Brown & Dewhurst, 1975) and is widely used for performing plant resistance bioassays. Eggs were obtained from Syngenta, Stein AG, Switzerland, and newly hatched *S. littoralis* larvae to be used in the bioassays were reared on corn-based artificial diet until the beginning of the experiment to avoid previous acclimation to a GSL-based diet. Moreover, we used the cabbage aphids *Brevicoryne brassicae* (Heteroptera: Aphididae) and green peach aphid *Myzus persicae* (Heteroptera: Aphididae) as specialist and generalist phloem-feeding insects, respectively. *Brevicoryne brassicae* is a specialist aphid that feeds exclusively on *Brassicaceae* plants, while *M. persicae* has been recorded to feed on more than 120 species and 30 families of plants worldwide (van Emden *et al.*, 1969). The aphids used in this experiment were originated from a rearing culture on radish plants (*Raphanus sativus*, Brassicaceae).

Plant sampling and herbivore bioassays

To analyse constitutive leaf GSL production, the 14 species of *Cardamine* were sampled at the flowering stage, from May until August, following the natural phenology of the plants. The flowering stage for sampling was chosen in order to avoid potential ontogenetic effects on plant chemistry (Barton & Koricheva, 2010), since most species flower very rapidly and for long periods, sometimes throughout the whole growing season. All plants (n = 10 per species) were collected directly from the field in each species' optimal habitat (Aeschimann *et al.*, 2004) in order to provide the most representative sampling. However, we acknowledge that with the current sampling design we are not accounting for the full range of intraspecific variation that may exist within species (Bakhtiari & Rasmann, 2020).

For each plant species, we performed insect resistance bioassays (N = four insect species × 10 replicates = 40/plant spp.) with *P. brassicae*, *S. littoralis*, *B. brassicae* and *M. persicae*. To this end, individual plants that were visibly not damaged by herbivores, and with a minimum distance of 10 m apart, were carefully excavated, transplanted in cylindrical 20 cm diameter plastic pots by

adding common potting soil where needed (Ricoter AG, Aarberg, Switzerland), and placed in a climate-controlled chamber (14:10 hrs and 23:15 °C day: night, and 55% relative humidity). For assays with chewing herbivores, we used one 6-day old caterpillar per plant, while for sap-feeding aphids we used one adult per plant. For each herbivore species, we randomly chose two fully-expanded leaves per plant and placed them in a Petri dish on a filter paper moistened with one drop of distilled water. After five days of feeding, we estimated plant resistance against the two different feeding guilds by calculating larval gain weight for caterpillars using the formula: $\ln(\text{final fresh weight} - \text{initial fresh weight})$, and the number of progenies for aphids. We specifically used detached leaves in order to avoid plant defence induction due to feeding, since here the aim was to correlate the measured chemical diversity of GSLs across different species (see below) with insect resistance.

Chemical analyses

For chemical analyses of GSLs, immediately after detaching leaves for the bioassays, all the remaining leaves were flash-frozen in liquid nitrogen and ground to powder using mortars and pestles in liquid nitrogen. A 100 mg aliquot was weighed for GSL extraction, and added with the extraction solvent (1.0 ml methanol: H₂O: formic acid (70:29.5:0.5, v/v)) along with 5 glass beads, shaken in a tissuelyser (Retsch GMBH, Haan, Germany) for 4 min at 30 Hz, and centrifuged at 20150 g for 3 min. The supernatant was diluted 20 times with 70% methanol and transferred to an HPLC vial. GSL analysis was performed using an Acquity ultra-high pressure liquid chromatography (UHPLC) from Waters (Milford, MA) interfaced to a Synapt G2 quadrupole time-of-flight mass spectrometry (QTOF) from Waters with electrospray ionization, using the method as described in (Glauser *et al.*, 2012). GSLs were identified by means of two complementary approaches: first by comparing their retention times and high-resolution spectra with those of an in-house database containing 65 different GSLs. In addition, we performed a search for unknown GSLs using a method adapted from Vanderplanck & Glauser (2018). In brief, we used MarkerlynxTM (Waters) for automatic peak picking and generation of possible elemental compositions and only kept the markers that contained 1 or 2 nitrogen atoms and 2 or 3 sulfur atoms. This yielded 51 potential GSLs, 32 of which being already present in our in-house database. These 51 potential GSLs were then quantified as glucoraphanin equivalents, except for indolic GSLs which were quantified as glucobrassicin equivalents.

Environmental and climatic variables

The same plant species were previously described in term of their climatic niche, as well as in term of their growth-related functional traits (Defossez *et al.*, 2018). We therefore used species' averages of several functional traits related to plant growth and anti-herbivore resistance including: 1) % of damage by natural herbivory, 2) specific leaf area (SLA), 3) plant biomass, 4) plant height, 5) chlorophyll content, and 6) leaf toughness. In short, herbivore damage was measured as total percent leaf area removed per plant on 10 randomly-sampled plants per species in their natural environment. SLA ($\text{mm}^2 \text{mg}^{-1} \text{DW}$) was measured as the area of a 1 cm leaf disc divided by its dry mass. High SLA values are correlated with short leaf lifetime, and faster growth (Reich *et al.*, 1991). Chlorophyll content was measured as SPAD values using a SPAD 502 Plus Chlorophyll Meter (Konica, Minolta, Tokyo Japan). In the *Cardmine* system under investigation, high SPAD values correlate with more concentrated values of chlorophyll in the leaf tissues, in turn correlating with smaller, tougher leaves, as for the alpine species (Defossez *et al.*, 2018). Leaf toughness (g mm^2) was measured with a custom-made hole puncher, and positively correlates with increased resistance against herbivore feeding, and with slower growth rates (Cornelissen *et al.*, 2003). Plant weight (g) was measured as the total dry aboveground plant biomass, and height (cm) was measured from the soil till the highest leaf ($n = 10$ plants per species and per trait; Table S1 in Supplementary material).

Statistical analyses

All statistical analyses were carried out with R software (R Development Core Team, 2019).

1) *Is variation in GSL diversity across species correlated with to species' phylogenetic distance?*

First, to assess the effect of species identity on the entire GSL matrix, we used non-metric multidimensional scaling (NMDS) implemented in the *vegan* package (Oksanen *et al.*, 2013). Differences in the GSL composition were tested using a permutational multivariate ANOVA (PERMANOVA), using the *adonis* function in the *vegan* package (Oksanen *et al.*, 2013). The Bray-Curtis metric was used to calculate dissimilarity among samples for both the NMDS and PERMANOVA, although results were robust to other distance metrics. Second, we performed a Mantel test (9999 iterations) using the function *mantel.test* in the *vegan* package (Oksanen *et al.*, 2013) between the phylogenetic distance matrix and the chemical distance matrix across all species to test for a potential correlation between phylogenetic distance and chemical distance.

2) *Does variation in GSL diversity simultaneously converge with plant species adaptation to their specific environments?* To address this question, we performed a coinertia analysis, at the species level, between the plant functional traits matrix and the GSL matrix using the function *coinertia* in the package *ade4* (Dray & Dufour, 2007). Using these analyses, we were able to visually detect clustering of species into four groups (see Results below). In other words, we detected four distinct growth forms-GSLs clusters, that also separated species according to their optimal habitat (see Fig. 2). We thus next performed discriminant analyses to determine to what extent GSL profiles could predict group assignment for each *Cardamine* species. We performed a linear discriminant (LD) analysis based on cluster groups using the function *lda* from the *MASS* package (Venables & Ripley, 2002). The quality of the resulting model was assessed through the classification success derived from a jackknife-based cross-validation (i.e. leave-one-out process) using the 'CV' argument of the *lda* function. Overall, 74% of samples were correctly classified, and the first LD of the model (LD1) accounted for about 90% of between-group variances. Differences in the distribution of leaf GSLs profiles along LD1 were tested with a pairwise Wilcoxon test coupled with a p-value adjustment based on the Benjamini and Hochberg method (Benjamini & Hochberg, 1995).

3) *How are different metrics of phytochemical diversity related to plant-herbivore interaction?* To address this question, we first calculated seven different diversity indices for production of GSLs across *Cardamine* species including; 1) the total GSL abundance (Sum), 2) the number of individual compounds (S; i.e. chemical richness), 3) the Shannon diversity index (H), 4) the chemical evenness (J), 5) the functional divergence (FDiv), 6) the functional richness (FRic), and 7) the Rao's quadratic entropy (RaoQ), using the package *FD* (Laliberté *et al.*, 2014). For calculating functional diversity indices, we included as functional traits of each GSL compound their chemical class (aliphatic, aromatic, indole), the class of their breakdown products (isothiocyanates, oxazolidine-2-thione, oxazolidine-2-thione), and their molecular weight. We here propose this new functional approach for organizing plant secondary metabolite diversity since we assume that high chemical diversity derived from the different chemical classes of the GSLs correlate with increased resistance against herbivores (Table 1). To assess the effect of species on the different chemical diversity indices, we ran one-way ANOVAs with each of the diversity indices separately as response variable.

For measuring the effect of each of the GSL diversity indices on each of the four different insects' growth rate value we ran Bayesian phylogenetic mixed effect models (BPMMs), as implemented in the R package *MCMCglmm* (function *MCMCglmm*) (Hadfield, 2010). MCMCglmm analyses allow taking into account plant species phylogenetic relationship as random factor in the model. Because the response variables followed a normal distribution, we used a MCMCglmm with a Gaussian distribution (Hadfield, 2010). We assessed the effect of the four species' groups derived from the coinertia analyses described above on insect resistance by performing ANOVAs with insect growth as response variable and species nested in the corresponding group as explanatory variable for each herbivore insect independently. Between groups, differences were assessed by pairwise comparisons using Tukey HSD post-hoc tests. Similarly, we assessed the effect of the species' groups on the chemical diversity indices using linear models.

Results

Effect of Species and phylogeny on the entire GSL matrix and phytochemical diversity.

Across all *Cardamine* species we found 51 GSL compounds: 22 aliphatic-GSLs, 6 aromatic-GSLs, 3 indole-GSLs, and 20 unknown GSLs (Table S2). Plant species differed significantly in the identity and amount of GSLs produced (Fig. 1; PERMANOVA: $F_{13, 64} = 16.95$, $p = 0.001$), but the difference in GSLs' profiles was not correlated with phylogenetic distance across species (Fig. 1, Mantel test: $r = 0.15$, $p = 0.3$). In addition, we found significant differences among species in all the seven indices of GSL diversity (Table S3). Specifically, across species, total abundance varied 15 folds, S 3 folds, H 4.5 folds, J 4.8 folds, FDiv 1.7 folds, FRic 3.4, and RaoQ 9.5 folds. Overall, we found positive correlations between J and RaoQ and H; between S and H, FDiv, and FRic, and a negative correlation between RaoQ and sum (Fig. S1).

Correlation between plant functional traits and chemical diversity

The results of the coinertia analysis revealed a significant correlation between the matrix of plant functional traits and the GSL matrix (Fig. 2; $r = 0.49$, $p = 0.01$), which grouped species according to common habitat-driven growth forms and GSL diversity scheme. Group1 was composed of species having higher chlorophyll levels, tough leaves, low SLA and low herbivore damage, typical of alpine species (*C. alpina*, *C. resedifolia*, *C. rivularis*, and *C. amara*). Group 2 was composed of species with high biomass, particularly of mid-elevation forest species (*C. kitaibelii*,

C. pentaphyllos, and *C. heptaphylla*). Group 3 was composed of species from mid-to-high elevation species growing in grasslands or in forest edges (*C. trifolia* and *C. pratensis*). Group 4 was composed of species with high SLA, low SPAD values and high herbivory, typical of low-elevation inhabiting species (*C. hirsuta*, *C. impatiens*, *C. flexuosa*, *C. matthioli* and *C. bulbifera*) (Fig. 2 and Fig. 3). Scoring from the LDA analysis highlighted that methoxyglucobrassicin and glucobrassicin are the GSLs characteristic of group1, 2-methy-butyl-GSL of group2, butyl GSL of group 3, and glucobrassicin and hydroxyglucobrassicin of group 4 (Fig. 3, Table S2).

The effect of chemical diversity on insect resistance

We found that the specialist caterpillar (*P. brassicae*) grew worst on high H diversity plants (Table 2). Specifically, for every H unit increase, the growth of *P. brassicae* caterpillars was reduced by 0.2 units. The multivariate analysis also showed a positive relationship between *P. brassicae* growth and J (Table 2), in which, for every 0.1 units of J, the growth of these caterpillars was in average 0.4 units increased. We also found that the generalist sap-feeder grew more on plants with the lowest FDiv values (Table 2). Specifically, *M. persicae* aphids produced on average 1.2 progeny less for every unit increase of FDiv.

Within-group analyses of insect resistance showed that the growth of all of the herbivore insects differed among different plant groups as highlighted above. The specialist *P. brassicae* grew 40% less on species of group 1 compared to the other three groups in average (Fig. 4a; $F_{1, 126} = 9.81$, $p < 0.0001$), while the generalist *S. littoralis* grew about twice more on species of group 4 than when feeding on all other species (Fig. 4b; $F_{1, 126} = 8.19$, $p < 0.0001$). While the growth of specialist *B. brassicae* aphids differed only between group 2 and 4 (Fig. 4c; $F_{1, 126} = 3.75$, $p = 0.01$), the generalist *M. persicae* grew 66% more on species of group 2 than on all other species in average (Fig. 4d; $F_{1, 126} = 5.68$, $p = 0.001$).

We found that the species groups had an effect on the total abundance of all compounds (sum), FDiv, FRic, and RaoQ, but not on H, S, and J (Table S4, Fig. S2). Specifically, group 2 displayed 2.4 times more abundance of GSLs than the three other groups (Fig. S2a), but had a 15% lower FDiv values than the other three groups (Fig. S2e). Group 4 displayed the highest FRic values (Fig. S2f), and species in group 2 and 3 showed a 53% drop in RaoQ values compared to the other two groups (Fig. S2g).

Discussion

The results of this study highlight the coupling of functional traits associated with plant growth forms specific to different environmental conditions with the differential production of GSLs across *Cardamine* species. Specifically, we found that *Cardamine* species cluster into four main groups. Each group, being anchored within a major climatic zone of the Alpine elevation gradient, expressed different levels of phytochemical diversity, and exhibited an overexpression of unique GSL compounds; indoles being the signature of the alpine and low elevation groups, and aliphatics the signature of two mid-elevation zones. Such habitat-driven phytochemical convergence had variable consequences on herbivores belonging to different diet breadths and feeding guilds. We thus suggest that the identity and diversity of secondary metabolites within a given species is determined by convergent adaptation to the local abiotic and biotic conditions, ultimately affecting different herbivores, differently.

One major prediction for explaining variation in phytochemical diversity across species is that phylogenetic conservatism for phytochemical production should result in closely-related species being more phytochemically-similar than distantly-related species (Futuyma & Agrawal, 2009a). On the contrary, we found that the diversity of GSLs was not explained by phylogeny. This is in contrast to the phylogenetic conservatism reported across different families of plants (Wink, 2003; Wink & Mohamed, 2003; Winkler & Mitter, 2008), or within genera; such as the production of aliphatic and branched-chain GSLs in the genus *Streptanthus* (Cacho *et al.*, 2015), the production of cardenolides in the genus *Asclepias* (Agrawal *et al.*, 2009; Rasmann & Agrawal, 2011), or the production of iridoid glycosides in the genus *Plantago* (Rønsted *et al.*, 2000). However, we interpret the lack of phylogenetic signal in GSL production in our system with caution, as the reduced number of investigated species impairs the ability to fully tease apart potential patterns that might emerge when assessing more species-rich clades (Swenson, 2019). Nevertheless, our results are indicative of other factors, other than shared evolutionary history, in driving the variable production of GSLs across species having colonized different habitats. Accordingly, previous studies also found ecological convergence in chemical defensive profiles across species, independently of phylogenetic relationship (Kursar & Coley, 2003; Salazar *et al.*, 2016).

Here, we expanded on this previous work by integrating large-scale ecological gradients, and we observed a significant correlation between plant functional traits, which are associated with the specific niche of the species within each elevation zone, and the GSLs matrices. These results also build on previous work showing, across 15 different *Cardamine* species, a strong correlation between climatic variables and 10 functional traits related to abiotic tolerance, growth and defence (Defosse *et al.*, 2018). Taken together, these results suggest that climatic factors force species into specific growth forms (Wright *et al.*, 2004; Díaz *et al.*, 2016), and likewise dictate the shape and structure of the phytochemicals to be produced. That said, there is a minute possibility that the observed phytochemical phenotype of each species, which was measured on plants directly collected in the field, is a reflection of very strong plasticity in phytochemical diversity production, influenced by the local habitat characteristics. While some level of plasticity cannot be excluded, previous work that measured GSLs across six of the same *Cardamine* species grown from seed in controlled climatic conditions (greenhouse) showed that all species retained clear separations in their GSL diversity, to a similar extent of what is observed here (Robert *et al.*, 2019). Moreover, all the studied species are bound to a given elevation band and to specific habitat characteristic, therefore their chemistry should be a direct reflection of their chemical phenotype as is always encountered in natural conditions.

Our results are less in line with predictions of the screening hypothesis (Berenbaum *et al.*, 1991; Duffey & Stout, 1996), but more with the resource availability hypothesis (Coley *et al.*, 1985).

Alpine species, for which herbivore pressure is the lowest (Pellissier *et al.*, 2016), but growing in resource-poor environments, expressed the highest number for practically all indices of phytochemical GSL diversity. In other words, we observed a less direct effect of herbivory pressure than that of the habitat on phytochemistry (Richards *et al.*, 2015). We observed that alpine species expressed the highest phytochemical diversity, particularly when compared to mid-elevation plant species. We argue that the higher costs associated with replacing biomass in the harsher environment, characteristics of high elevation zones (Korner *et al.*, 1989; Chapin & Korner, 1995), could be an explanation for the increased GSL diversity as observed in our study.

At high elevation, the cost to recover tissue lost is strongly limited by the paucity of resources and the cold temperatures. For these alpine species, the fitness costs of herbivory cannot be outweighed by the energy saved in reduced levels of defences (Bryant *et al.*, 1983). Therefore, alpine species (group 1) are characterized by a combination of traits conferring high abiotic

resistance (e.g. lower SLA values, tougher leaves, and slow growth), and they also integrate higher levels of phytochemical diversity for likely withstanding the scattered, but potentially lethal, attack of herbivores (Rasmann *et al.*, 2014a). Low-elevation species, on the other hand, experience a constantly high pressure by herbivores. Thus, while expressing traits relating to fast growth and lower abiotic resistance (higher SLA values and softer leaves), they also express higher GSL diversity, particularly compared to the species within the two mid-elevation groups. In line with these results, a recent study across several populations of showy milkweed suggested that increased resource acquisition in climatically favourable sites led to escalation of chemical defences compared to resource poor growing habitats (Hahn *et al.*, 2019). Species occupying mid-elevation zones of forest habitats are typically comprised of species with high biomass production (especially species in group 2) and high carbon to nitrogen ratio (CN) (Defossez *et al.*, 2018), which suggest a preference toward investing in tolerance instead of defences for those species (Núñez-Farfán *et al.*, 2007). In sum, our results suggest that where plant species share a common compendium of ecological variables, such as common herbivore pressure, similar resource levels, or similar climates, plants are also likely to defend themselves with a similar set of chemical molecules.

In accordance with alpine species bearing the highest chemical diversity values, chewing herbivores, especially the specialist *P. brassicae* grew less quickly on those plants. Particularly, these plants produced the highest H values. However, although both generalist and specialist caterpillars performed worse on alpine species compared to low-elevation plants, our results do not fully concord with the general view that GSL are more efficient against generalist than specialists (Schlaeppli *et al.*, 2008; Schweiger *et al.*, 2014; Rasmann *et al.*, 2015). One argument could be that plants must cope with diverse arrays of generalist herbivores in their natural habitat that are differently affected by diversity of toxic phytochemicals. Thus, the effect of phytochemical diversity on resistance against generalist chewing herbivores cannot be fully elucidated only using a single generalist species as in our study. In contrast, *P. brassicae*, similar to all other mustard specialists, feeds exclusively on plants producing GSLs (Chew, 1988), also utilizing these compounds for host recognition and as feeding stimulants (Moyes *et al.*, 2000). Interestingly, it has been shown that ovipositing *P. rapae* females respond more strongly to indole GSLs, such as glucobrassicin, (Rodman & Chew, 1980; Renwick *et al.*, 1992; Huang *et al.*, 1994), which is also a GSL characterizing the alpine species. Therefore, the slow-growing and

comparatively very small alpine *Cardamine* species seems to have evolved specific GSL combinations, through high H values, that are toxic to the specialist herbivores, but this hypothesis needs to be tested thoroughly using mixtures of compounds, and by comparing a wider range of generalist herbivores.

Concerning sucking herbivores, we found that the generalist aphids *M. persicae* grew more on plants with lower FDiv values (i.e. species in group 2). Therefore, for generalist aphids, our results support the prediction of a negative correlation between the functional chemical diversity/divergence of GSLs and herbivore performance (Dyer *et al.*, 2018). That said, it has been argued that GSLs in general are less toxic to aphids than to caterpillars, because aphids avoid the activation of GSLs by the enzyme myrosinase (de Vos *et al.*, 2007). Nevertheless, indole GSLs are thought to be less stable, and activate spontaneously in the absence of myrosinase. Consequently, indole GSLs alone have been shown to impair the growth of the generalist aphid *M. persicae* when added to an artificial diet or overexpressed in host plants (Kim & Jander, 2007; Kim *et al.*, 2008). On the contrary, specialist aphids, such as *B. brassicae*, are able to accumulate aliphatic GSLs (Francis *et al.* 2001). In line with these findings, we suggest that aphids are impaired by the indole GSLs, which are more produced by plants in group 1 and 4, and less produced by the plants from group 2, as well by GSL profiles characterized with high FDiv values. Moreover, our study illustrates that not all of the chemical diversity metrics showed associations with herbivore performance. For instance, in some cases H and functional diversity indices showed lack of concordance. While this may suggest that stoichiometry alone - e.g. higher H = higher richness & evenness of compounds – could create all the necessary costly synergies, regardless of the functional diversity of those compounds, the ecological outcome of such effect can be context-dependent and may vary across herbivores of different feeding guilds and modes, indicating the multi-dimensionality of phytochemical diversity in ecological interaction with herbivores with each type of diversity having potentially unique, contrasting, or interactive ecological effects.

In summary, this study, by combining metabolomics analyses with insect bioassays on plants growing along steep ecological gradients, provides a novel approach for explaining the cause and consequences of variations in phytochemical diversity across plant species. By including several indices of phytochemical diversity, we took a step further in mechanistically disentangling the effects of different metrics of phytochemical diversity on insect herbivore resistance. For instance,

we observed that groups of plants bearing practically identical chemical richness values (S) can have completely different GSLs compositions (see comparison of different metrics in Fig. 3 and phytochemical distance in Fig. 1). This indicates that focusing on arbitrarily-selected indices of phytochemical diversity can be misleading in interpreting the metabolomics data and their effects (Wetzel & Whitehead, 2020). Taking into account different factors determining such diversity, such as compound class, metabolites' molecular metrics, or biological activity, we were able to add a functional dimension to phytochemical diversity, as was for instance done for cardenolides in milkweeds using polarity values (Rasmann & Agrawal, 2011). We thus argue that the classical indices of phytochemical diversity used so far (total amount, number of compounds, Shannon diversity), should be expanded to include functional axes of chemical diversity, in order to be able to interpret the biological activity of secondary metabolites in a more precise and ecologically relevant manner, and to integrate these novel axes related to plant defences into the functional syndrome of plant growth forms.

Acknowledgments

We thank Alan Kergunteuil for comments on previous versions of the manuscript. This work was supported by Swiss National Science Foundation grant 31003A_179481 to SR.

Author contributions: SR and MB initiated the project and collected the data, GG performed chemical analyses, ED, SR and MB analysed the data, all authors wrote the manuscript.

Data Availability Statement: Data underlying this article can be accessed on Dryad Digital Repository at <https://doi.org/10.5061/dryad.pzgmsbcjf>, and used under the Creative Commons Attribution licence.

References

- Aeschimann D, Lauber K, Moser DM, Theurillat J-P. 2004.** *Flora Alpina*. Berne, Switzerland: Haupt
- Agrawal AA, Fishbein M, Halitschke R, Hastings AP, Rabosky DL, Rasmann S. 2009.** Evidence for adaptive radiation from a phylogenetic study of plant defenses. *Proceedings of the National Academy of Sciences of the United States of America* **106**(43): 18067-18072.
- Ali JG, Agrawal AA. 2012.** Specialist versus generalist insect herbivores and plant defense. *Trends in Plant Science* **17**(5): 293-302.
- Bakhtiari M, Rasmann S. 2020.** Variation in below-to aboveground systemic induction of glucosinolates mediates plant fitness consequences under herbivore attack. *Journal of Chemical Ecology* **46**(3): 317-329.
- Barton KE, Koricheva J. 2010.** The ontogeny of plant defense and herbivory: characterizing general patterns using meta-analysis. *American Naturalist* **175**(4): 481-493.
- Becerra JX. 1997.** Insects on plants: Macroevolutionary chemical trends in host use. *Science* **276**(5310): 253-256.
- Benjamini Y, Hochberg Y. 1995.** Controlling the false discovery rate: a practical and powerful approach to multiple testing. *Journal of the Royal Statistical Society. Series B* **57**(1): 289-300.
- Berenbaum M, Feeny P. 1981.** Toxicity of angular furanocoumarins to swallowtail butterflies - escalation in a co-evolutionary arms-race. *Science* **212**(4497): 927-929.
- Berenbaum M, Neal JJ. 1985.** Synergism between myristicin and xanthotoxin, a naturally cooccurring plant toxicant. *Journal of Chemical Ecology* **11**(10): 1349-1358.
- Berenbaum MR, Nitao JK, Zangerl AR. 1991.** Adaptive significance of furanocoumarin diversity in *Pastinaca sativa* (Apiaceae). *Journal of Chemical Ecology* **17**(1): 207-215.
- Brown ES, Dewhurst CF. 1975.** The genus *Spodoptera* (Lepidoptera, Noctuidae) in Africa and the Near East. *Bulletin of Entomological Research* **65**: 221-262.
- Bryant JP, Chapin FS, Klein DR. 1983.** Carbon nutrient balance of boreal plants in relation to vertebrate herbivory. *Oikos* **40**(3): 357-368.
- Cacho NI, Kliebenstein DJ, Strauss SY. 2015.** Macroevolutionary patterns of glucosinolate defense and tests of defense-escalation and resource availability hypotheses. *New Phytologist* **208**(3): 915-927.
- Chapin FS, Korner C, eds. 1995.** *Arctic and alpine biodiversity: patterns, causes and ecosystem consequences*. Berlin: Springer-Verlag.

- Chew FS 1988.** Biological effects of glucosinolates. *Biologically Active Natural Products: American Chemical Society*, 155-181.
- Coley PD, Barone JA. 1996.** Herbivory and plant defenses in tropical forests. *Annual Review of Ecology and Systematics* **27**: 305-335.
- Coley PD, Bryant JP, Chapin FS. 1985.** Resource availability and plant antiherbivore defense. *Science* **230**(4728): 895-899.
- Cornelissen JHC, Lavorel S, Garnier E, Diaz S, Buchmann N, Gurvich DE, Reich PB, ter Steege H, Morgan HD, van der Heijden MGA, et al. 2003.** A handbook of protocols for standardised and easy measurement of plant functional traits worldwide. *Australian Journal of Botany* **51**(4): 335-380.
- de Vos M, Kim JH, Jander G. 2007.** Biochemistry and molecular biology of Arabidopsis-aphid interactions. *Bioessays* **29**(9): 871-883.
- Defossez E, Pellissier L, Rasmann S. 2018.** The unfolding of plant growth form-defence syndromes along elevation gradients. *Ecology Letters* **21**(5): 609-618.
- Díaz S, Kattge J, Cornelissen JHC, Wright IJ, Lavorel S, Dray S, Reu B, Kleyer M, Wirth C, Colin Prentice I, et al. 2016.** The global spectrum of plant form and function. *Nature* **529**(7585): 167-171.
- Dobzhansky T. 1950.** Evolution in the tropics. *American Scientist* **38**: 209-221.
- Dray S, Dufour AB. 2007.** The ade4 package: Implementing the duality diagram for ecologists. *Journal of Statistical Software* **22**(4): 1-20.
- Duffey SS, Stout MJ. 1996.** Antinutritive and toxic components of plant defense against insects. *Archives of Insect Biochemistry and Physiology* **32**(1): 3-37.
- Durán SM, Martin RE, Díaz S, Maitner BS, Malhi Y, Salinas N, Shenkin A, Silman MR, Wieczynski DJ, Asner GP, et al. 2019.** Informing trait-based ecology by assessing remotely sensed functional diversity across a broad tropical temperature gradient. *Science Advances* **5**(12): eaaw8114.
- Durka W, Michalski SG. 2012.** Daphne: a dated phylogeny of a large European flora for phylogenetically informed ecological analyses. *Ecology* **93**(10): 2297-2297.
- Dyer LA, Philbin CS, Ochsenrider KM, Richards LA, Massad TJ, Smilanich AM, Forister ML, Parchman TL, Galland LM, Hurtado PJ, et al. 2018.** Modern approaches to study plant–insect interactions in chemical ecology. *Nature Reviews Chemistry* **2**(6): 50-64.
- Ehrlich PR, Raven PH. 1964.** Butterflies and plants - a study in coevolution. *Evolution* **18**(4): 586-608.
- Endara MJ, Coley PD. 2011.** The resource availability hypothesis revisited: a meta-analysis. *Functional Ecology* **25**(2): 389-398.

- Farrell BD, Mitter C. 1998.** The timing of insect/plant diversification: might *Tetraopes* (Coleoptera : Cerambycidae) and *Asclepias* (Asclepiadaceae) have co-evolved? *Biological Journal of the Linnean Society* **63**(4): 553-577.
- Fine PVA, Mesones I, Coley PD. 2004.** Herbivores promote habitat specialization by trees in amazonian forests. *Science* **305**(5684): 663-665.
- Firn RD, Jones CG 1996.** An explanation of secondary product 'redundancy". In: Romeo JT, Saunders IA, Barbosa P eds. *Phytochemical diversity and redundancy in ecological interactions*. New York and London: Plenum Press, 295-312.
- Firn RD, Jones CG. 2003.** Natural products--a simple model to explain chemical diversity. *Nat Prod Rep* **20**(4): 382-391.
- Fischbach MA, Clardy J. 2007.** One pathway, many products. *Nature Chemical Biology* **3**(7): 353-355.
- Futuyma DJ, Agrawal AA. 2009a.** Evolutionary history and species interactions. *Proceedings of the National Academy of Sciences of the United States of America* **106**(43): 18043-18044.
- Futuyma DJ, Agrawal AA. 2009b.** Macroevolution and the biological diversity of plants and herbivores. *Proceedings of the National Academy of Sciences of the United States of America* **106**(43): 18054-18061.
- Glaser G, Schweizer F, Turlings TCJ, Reymond P. 2012.** Rapid profiling of intact glucosinolates in *Arabidopsis* leaves by UHPLC-QTOFMS using a charged surface hybrid column. *Phytochemical Analysis* **23**(5): 520-528.
- Hadfield JD. 2010.** MCMC methods for multi-response generalized linear mixed models: The MCMCglmm R Package. *Journal of Statistical Software* **33**(2): 1--22.
- Hahn PG, Agrawal AA, Sussman KI, Maron JL. 2019.** Population variation, environmental gradients, and the evolutionary ecology of plant defense against herbivory. *The American Naturalist* **193**(1): 20-34.
- Hodkinson ID. 2005.** Terrestrial insects along elevation gradients: species and community responses to altitude. *Biological Reviews* **80**(3): 489-513.
- Huang XP, Renwick JAA, Chew FS. 1994.** Oviposition stimulants and deterrents control acceptance of *Alliaria petiolata* by *Pieris rapae* and *P. napi oleracea*. *CHEMOECOLOGY* **5**(2): 79-87.
- Hunter MD. 2016.** *The phytochemical landscape: linking trophic interactions and nutrient dynamics*. Princeton, New Jersey, USA: Princeton University Press.
- Jones CG, Firn RD. 1991.** On the evolution of plant secondary chemical diversity. *Philosophical Transactions of the Royal Society of London Series B-Biological Sciences* **333**(1267): 273-280.

- Kim JH, Jander G. 2007.** *Myzus persicae* (green peach aphid) feeding on Arabidopsis induces the formation of a deterrent indole glucosinolate. *Plant Journal* **49**(6): 1008-1019.
- Kim JH, Lee BW, Schroeder FC, Jander G. 2008.** Identification of indole glucosinolate breakdown products with antifeedant effects on *Myzus persicae* (green peach aphid). *Plant Journal* **54**(6): 1015-1026.
- Korner C, Neumayer M, Menendezriehl SP, Smeetscheel A. 1989.** Functional-morphology of mountain plants. *Flora* **182**(5-6): 353-383.
- Kursar TA, Coley PD. 2003.** Convergence in defense syndromes of young leaves in tropical rainforests. *Biochemical Systematics and Ecology* **31**(8): 929-949.
- Laliberté E, Legendre P, Shipley B. 2014.** FD: measuring functional diversity from multiple traits, and other tools for functional ecology. *R package version 1.0-12*
- Lewinsohn E, Gijzen M. 2009.** Phytochemical diversity: The sounds of silent metabolism. *Plant Science* **176**(2): 161-169.
- Moles AT, Wallis IR, Foley WJ, Warton DI, Stegen JC, Bisigato AJ, Cella-Pizarro L, Clark CJ, Cohen PS, Cornwell WK, et al. 2011.** Putting plant resistance traits on the map: a test of the idea that plants are better defended at lower latitudes. *New Phytologist* **191**(3): 777-788.
- Moyes CL, Collin HA, Britton G, Raybould AE. 2000.** Glucosinolates and differential herbivory in wild populations of *Brassica oleracea*. *Journal of Chemical Ecology* **26**(11): 2625-2641.
- Núñez-Farfán J, Fornoni J, Valverde PL. 2007.** The evolution of resistance and tolerance to herbivores. *Annual Review of Ecology Evolution and Systematics* **38**: 541-566.
- Oksanen J, Blanchet FG, Kindt R, Legendre P, Minchin PR, O'Hara RB, Simpson GL, Solymos P, Stevens MHH, Wagner H 2013.** vegan: Community Ecology Package: <http://vegan.r-forge.r-project.org/>.
- Paradis E, Claude J, Strimmer K. 2004.** APE: analyses of phylogenetics and evolution in R language. *Bioinformatics* **20**(202004): 289-290.
- Pellissier L, Moreira X, Danner H, Serrano M, Salamin N, van Dam NM, Rasmann S. 2016.** The simultaneous inducibility of phytochemicals related to plant direct and indirect defences against herbivores is stronger at low elevation. *Journal of Ecology* **104**(4): 1116-1125.
- R Development Core Team. 2019.** R: A language and environment for statistical computing.
- Rasmann S, Agrawal AA. 2009.** Plant defense against herbivory: progress in identifying synergism, redundancy, and antagonism between resistance traits. *Current Opinion in Plant Biology* **12**(4): 473-478.
- Rasmann S, Agrawal AA. 2011.** Latitudinal patterns in plant defense: evolution of cardenolides, their toxicity and induction following herbivory. *Ecology Letters* **14**(5): 476-483.

Rasmann S, Buri A, Gallot-Lavallée M, Joaquim J, Purcell J, Pellissier L. 2014a. Differential allocation and deployment of direct and indirect defences by *Vicia sepium* along elevation gradients. *Journal of Ecology* **102**(4): 930-938.

Rasmann S, Chassin E, Bilat J, Glauser G, Reymond P. 2015. Trade-off between constitutive and inducible resistance against herbivores is only partially explained by gene expression and glucosinolate production. *Journal of Experimental Botany* **66**(9): 2527–2534.

Rasmann S, Pellissier L, Defosse E, Jactel H, Kunstler G. 2014b. Climate-driven change in plant–insect interactions along elevation gradients. *Functional Ecology* **28**(1): 46-54.

Reich P, Uhl C, Walters M, Ellsworth D. 1991. Leaf lifespan as a determinant of leaf structure and function among 23 amazonian tree species. *Oecologia* **86**: 16-24.

Renwick JAA, Radke CD, Sachdev-Gupta K, Städler E. 1992. Leaf surface chemicals stimulating oviposition by *Pieris rapae* (Lepidoptera: Pieridae) on cabbage. *CHEMOECOLOGY* **3**(1): 33-38.

Richards LA, Dyer LA, Forister ML, Smilanich AM, Dodson CD, Leonard MD, Jeffrey CS. 2015. Phytochemical diversity drives plant-insect community diversity. *Proceedings of the National Academy of Sciences of the United States of America* **112**(35): 10973-10978.

Richards LA, Lampert EC, Bowers MD, Dodson CD, Smilanich AM, Dyer LA. 2012. Synergistic effects of iridoid glycosides on the survival, development and immune response of a specialist caterpillar, *Junonia coenia* (Nymphalidae). *Journal of Chemical Ecology* **38**(10): 1276-1284.

Robert CAM, Pellissier L, Moreira X, Defosse E, Pfander M, Guyer A, van Dam NM, Rasmann S. 2019. Correlated induction of phytohormones and glucosinolates shapes insect herbivore resistance of *Cardamine* species along elevational gradients. *Journal of Chemical Ecology* **45**(7): 638-648.

Rodman JE, Chew FS. 1980. Phytochemical correlates of herbivory in a community of native and naturalized cruciferae. *Biochemical Systematics and Ecology* **8**(1): 43-50.

Romeo JT, Saunders JA, Barbosa P, eds. 1996. *Phytochemical diversity and redundancy in ecological interactions*. New York, USA: Plenum Press, New York.

Rønsted N, Gøbel E, Franzyk H, Jensen SR, Olsen CE. 2000. Chemotaxonomy of *Plantago*. Iridoid glucosides and caffeoyl phenylethanoid glycosides. *Phytochemistry* **55**(4): 337-348.

Salazar D, Jaramillo MA, Marquis RJ. 2016. Chemical similarity and local community assembly in the species rich tropical genus *Piper*. *Ecology* **97**(11): 3176-3183.

Schemske DW 2009. Biotic interactions and speciation in the tropics. In: Butlin RK, Bridle JR, Schluter D eds. *Speciation and Patterns of Diversity*. Cambridge, United Kingdom: Cambridge Univ. Press, 219–239.

Schlaeppli K, Bodenhausen N, Buchala A, Mauch F, Reymond P. 2008. The glutathione-deficient mutant pad2-1 accumulates lower amounts of glucosinolates and is more susceptible to the insect herbivore *Spodoptera littoralis*. *The Plant Journal* **55**(5): 774-786.

Schoonhoven LM, van Loon JJA, Dicke M. 2005. *Insect-plant biology*. Oxford: Oxford University Press.

Schweiger R, Heise AM, Persicke M, Muller C. 2014. Interactions between the jasmonic and salicylic acid pathway modulate the plant metabolome and affect herbivores of different feeding types. *Plant Cell Environ* **37**(7): 1574-1585.

Steppuhn A, Baldwin IT. 2007. Resistance management in a native plant: nicotine prevents herbivores from compensating for plant protease inhibitors. *Ecology Letters* **10**(6): 499-511.

Sternberg ED, Lefèvre T, Li J, de Castillejo CL, Li H, Hunter MD, de Roode JC. 2012. Food plant derived disease tolerance and resistance in a natural butterfly-plant-parasite interactions. *Evolution* **66**(11): 3367-3376.

Swenson NG. 2019. *Phylogenetic ecology : a history, critique, and remodeling*. Chicago ; London: The University of Chicago Press.

van Dam N, Tytgat T, Kirkegaard J. 2009. Root and shoot glucosinolates: a comparison of their diversity, function and interactions in natural and managed ecosystems. *Phytochemistry Reviews* **8**(1): 171-186.

van Emden HF, Eastop VF, Hughes RD, Way MJ. 1969. The Ecology of *Myzus persicae*. *Annual Review of Entomology* **14**(1): 197-270.

Vanderplanck M, Glauser G. 2018. Integration of non-targeted metabolomics and automated determination of elemental compositions for comprehensive alkaloid profiling in plants. *Phytochemistry* **154**: 1-9.

Venables WN, Ripley BD. 2002. *Modern Applied Statistics with S*. New York., USA: Springer.

Vermeij GJ. 1994. The evolutionary interaction among species: selection, escalation, and coevolution. *Annual Review of Ecology and Systematics* **25**: 219-236.

Wetzel WC, Whitehead SR. 2020. The many dimensions of phytochemical diversity: linking theory to practice. *Ecology Letters* **23**(1): 16-32.

Wink M. 2003. Evolution of secondary metabolites from an ecological and molecular phylogenetic perspective. *Phytochemistry* **64**(1): 3-19.

Wink M, Mohamed GIA. 2003. Evolution of chemical defense traits in the Leguminosae: mapping of distribution patterns of secondary metabolites on a molecular phylogeny inferred from nucleotide sequences of the rbcL gene. *Biochemical Systematics and Ecology* **31**(8): 897-917.

Winkler IS, Mitter C 2008. The phylogenetic dimension of insect-plant interactions: a review of recent evidence. In: Tilmon KJ ed. *Specialization, Speciation and Radiation: The Evolutionary Biology of Herbivorous Insects*. Berkeley: University of California Press, 240-263.

Wright IJ, Reich PB, Westoby M, Ackerly DD, Baruch Z, Bongers F, Cavender-Bares J, Chapin T, Cornelissen JHC, Diemer M, et al. 2004. The worldwide leaf economics spectrum. *Nature* **428**(6985): 821-827.

Supporting Information

Additional supporting information may be found in the online version of this article.

Figure S1. Correlation matrix plot of the seven chemical diversity indices calculated for the diversity of glucosinolates (GSLs) found across 14 *Cardamine* species.

Figure S2. Boxplots representing the expression seven phytochemical diversity indices that summarize glucosinolate (GSL) diversity across the four *Cardamine* species clusters.

Table S1. Dataset of functional trait values for 14 species of *Cardamine*.

Table S2. Results from the LDA analyses.

Table S3. Effect of plant species on seven phytochemical diversity indices that summarize glucosinolate (GSL) diversity across 14 *Cardamine* species.

Table S4. Effect of species' clusters on seven phytochemical diversity indices that summarize glucosinolate (GSL) diversity across 14 *Cardamine* species.

Table 1. Predictors of plant chemical toxicity when studying mixtures of chemical compounds.

Chemical diversity measure*	Description	Why toxic?	Previous use
Amount	Sum of concentrations	Dose-dependent effects	Widespread (Schoonhoven <i>et al.</i> , 2005)
S (chemical richness)	Count of unique compounds	Difficult to deal with chemical mixtures	Commonly used after targeted metabolomics analyses using chromatographic separations (e.g. Cacho <i>et al.</i> , 2015)
H (Shannon diversity)	Weights the contribution of each compound by its relative concentration in the mixture	Difficult to deal with chemical mixtures	More and more common when using targeted metabolomics studies of quantified individual compounds (e.g. Rasmann & Agrawal, 2011; Cacho <i>et al.</i> , 2015)
J (chemical evenness)	Measures the likelihood of all compounds being present in the same relative concentration in the mixture	Difficult to deal with chemical mixtures that are homogenous in concentration, and not composed of very few dominant compounds	Related to H, and used for instance when analyzing cardenolides in milkweeds:(Rasmann & Agrawal, 2011)
FRic (functional richness)	Describes the functional space of the chemical mixtures in relation to different chemical properties such as molecular mass, or chemical functional groups	Encountering compounds of different functional groups could force more costly physiological acclimation	In milkweeds, cardenolide chemical functionality was described based on their polarity (Rasmann & Agrawal, 2011; Sternberg <i>et al.</i> , 2012).
FDiv (functional divergence)	Describes the range of chemical functional space exhibited by the	The more functionally diverse the mixture is, the	NA ¹

	compounds present in the mixture	more likely the plant is to be resistant against a wide range of herbivores. Greater functional divergence could force more costly physiological acclimation.	
RaoQ (quadratic entropy)	Describes the mean variability across mixtures based on chemical dissimilarities.	The more functionally diverse the mixture is, the more likely the plant is to be resistant against a wide range of herbivores. Also, larger variation in chemical dissimilarities could force more costly physiological acclimation.	NA

In particular, the toxic effects of glucosinolates (GSLs) may increase with (1) overall amount, (2) overall number of molecules, (3) more diversity, (4) more homogeneity of compounds' concentrations in the mixture (5) overall diversity in the chemical functional groups, and (6, 7) the presence of highly divergent chemical functional groups.

*(Inspired by Rasmann & Agrawal, 2011; Wetzal & Whitehead, 2020)

¹ NA = Information not available

Table 2. Effect of phytochemical diversity on resistance against herbivores across *Cardamine* species.

Diet breadth	Feeding type	Species	Variable	post. Mean	l-95% CI	u-95% CI	eff.samp	p MCMC
Specialist	Chewing	<i>Pieris brassicae</i>	(Intercept)	0.36	-1.29	2.25	1000	0.57
			Sum	0.17	-0.31	0.67	1000	0.48
			H	-3.78	-6.89	-0.33	1000	0.03
			S	1.01	-0.26	2.32	1000	0.16
			J	3.27	0.08	6.04	1000	0.04
			FDiv	-0.20	-0.79	0.34	1000	0.49
			Fric	0.28	-0.19	0.78	1000	0.27
			RaoQ	0.07	-0.81	0.93	1000	0.92
	Sucking	<i>Brevicoryne brassicae</i>	(Intercept)	1.72	1.25	2.22	420.3	<0.001
			Sum	-0.16	-0.44	0.13	1000	0.26
			H	-0.16	-2.82	2.34	1000	0.9
			S	0.19	-0.82	1.01	1000	0.67
			J	0.01	-2.38	2.11	1000	0.99
			Fdiv	-0.14	-0.42	0.17	249.4	0.32
			Fric	-0.06	-0.41	0.24	1000	0.7
RaoQ			0.30	-0.19	0.80	1000	0.21	
Generalist	Chewing	<i>Spodoptera littoralis</i>	(Intercept)	1.69	0.68	2.72	2262.66	0.02
			Sum	0.08	-0.51	0.66	1000	0.78
			H	0.71	-5.20	6.12	641.99	0.83
			S	-0.32	-2.36	1.91	144.88	0.76
			J	-1.50	-6.28	3.52	705.4	0.55
			FDiv	-0.37	-0.97	0.26	297.32	0.21
			FRic	0.70	-0.20	1.41	15.43	0.12
			RaoQ	0.97	0.07	2.07	845.39	0.05
	Sucking	<i>Myzus persicae</i>	(Intercept)	1.22	0.97	1.45	910.4	<0.001
			Sum	0.23	-0.05	0.52	1000	0.13
			H	1.06	-1.56	3.77	907.1	0.43
			S	-0.27	-1.36	0.63	1000	0.6
			J	-1.16	-3.56	1.10	1000	0.36
			FDiv	-0.37	-0.66	-0.11	1000	0.01
			FRic	0.13	-0.18	0.44	1000	0.43
RaoQ			0.24	-0.26	0.72	1039.6	0.34	

The effects were tested using MCMCglmm analyses by including phylogenetic relatedness among the 14 *Cardamine* species as random factor. Multivariate analyses were performed that included normalized values of the seven phytochemical diversity indices that summarize glucosinolate (GSL) diversity across the *Cardamine* species. Sum = total GSL abundance; H = chemical diversity based on Shannon diversity calculation; S = number of individual compounds; J = chemical evenness; FDiv = functional diversity; FRic = functional richness; RaoQ = functional RaoQ value.

Bold values indicate statistical significance; $p < 0.05$

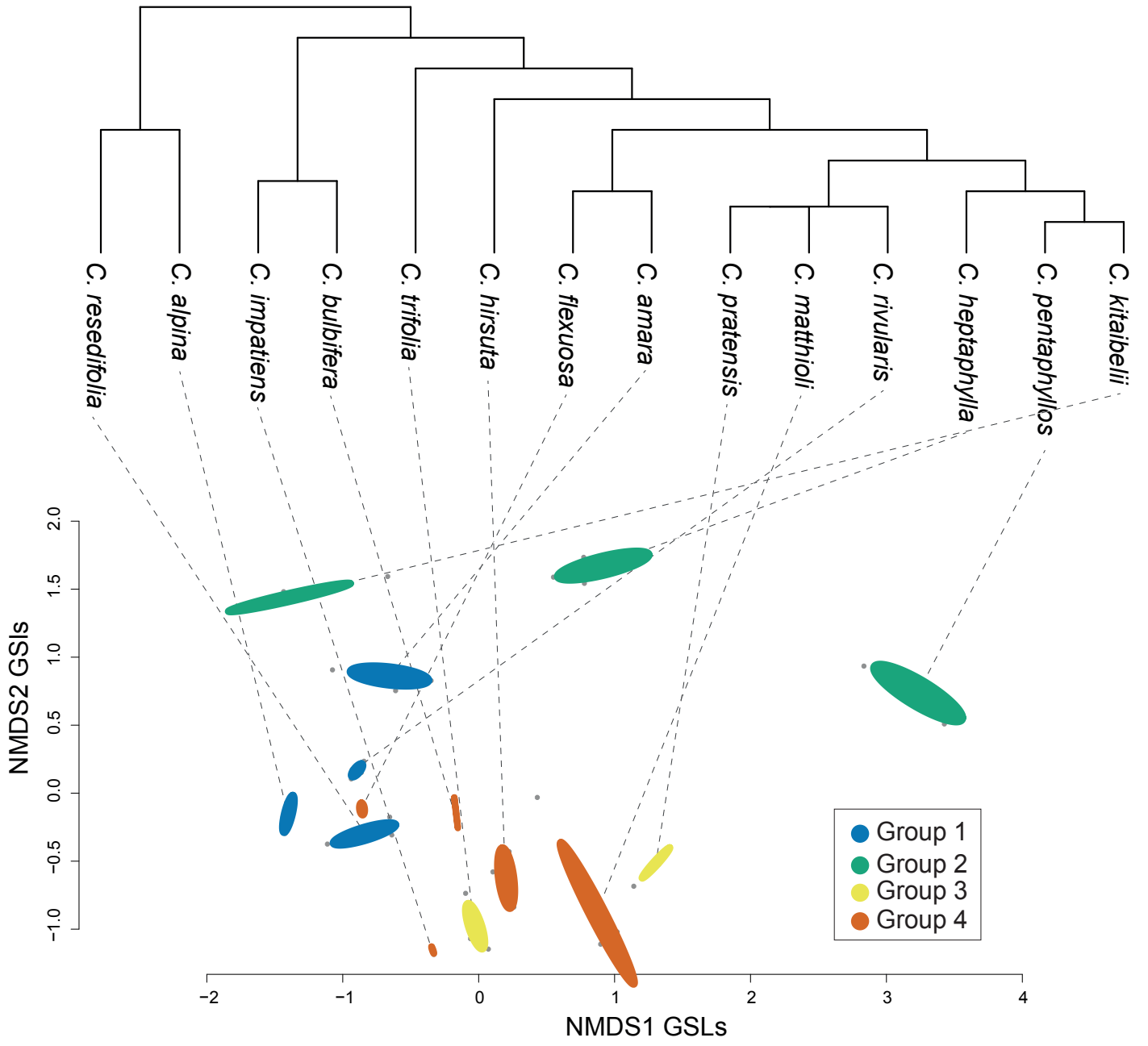
Figure legends

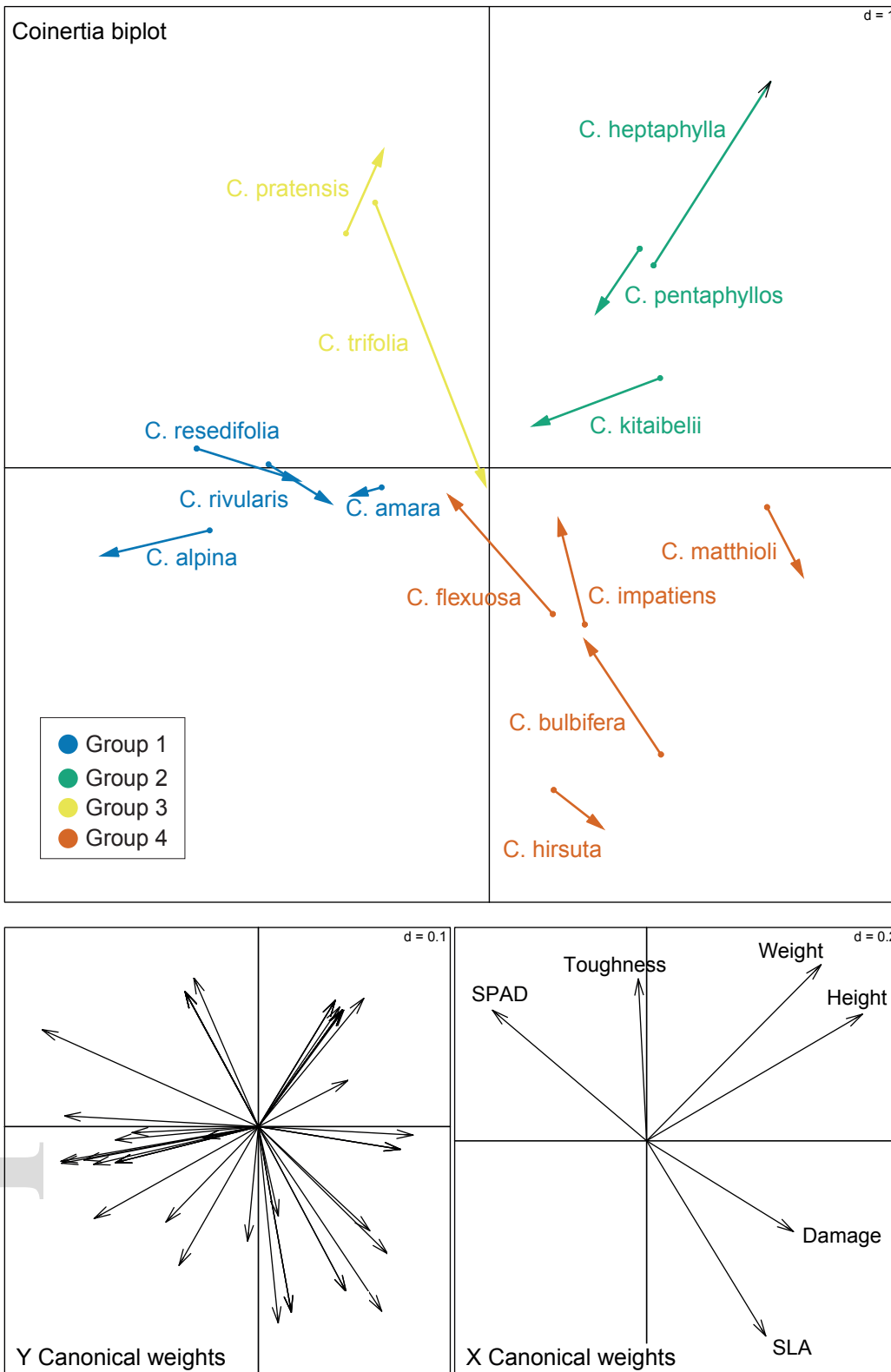
Figure 1. Glucosinolate (GSLs) chemical distance versus phylogenetic distance across 14 species of *Cardamine*. Shown is the non-metric multidimensional scaling (NMDS) plot of the GSLs of all species grouped based on 95% confidence interval ellipses. Colours represent the different groups (1: *C. alpina*, *C. resedifolia*, *C. rivularis*, *C. amara*, 2: *C. kitaibelii*, *C. pentaphyllos*, *C. heptaphylla*, 3: *C. trifolia* and *C. pratensis*, 4: *C. hirsuta*, *C. impatiens*, *C. flexuosa*, *C. matthioli* and *C. bulbifera*). Finally, each species in the NMDS plot is assigned to its corresponding phylogenetic position in the pruned cladogram depicted on top.

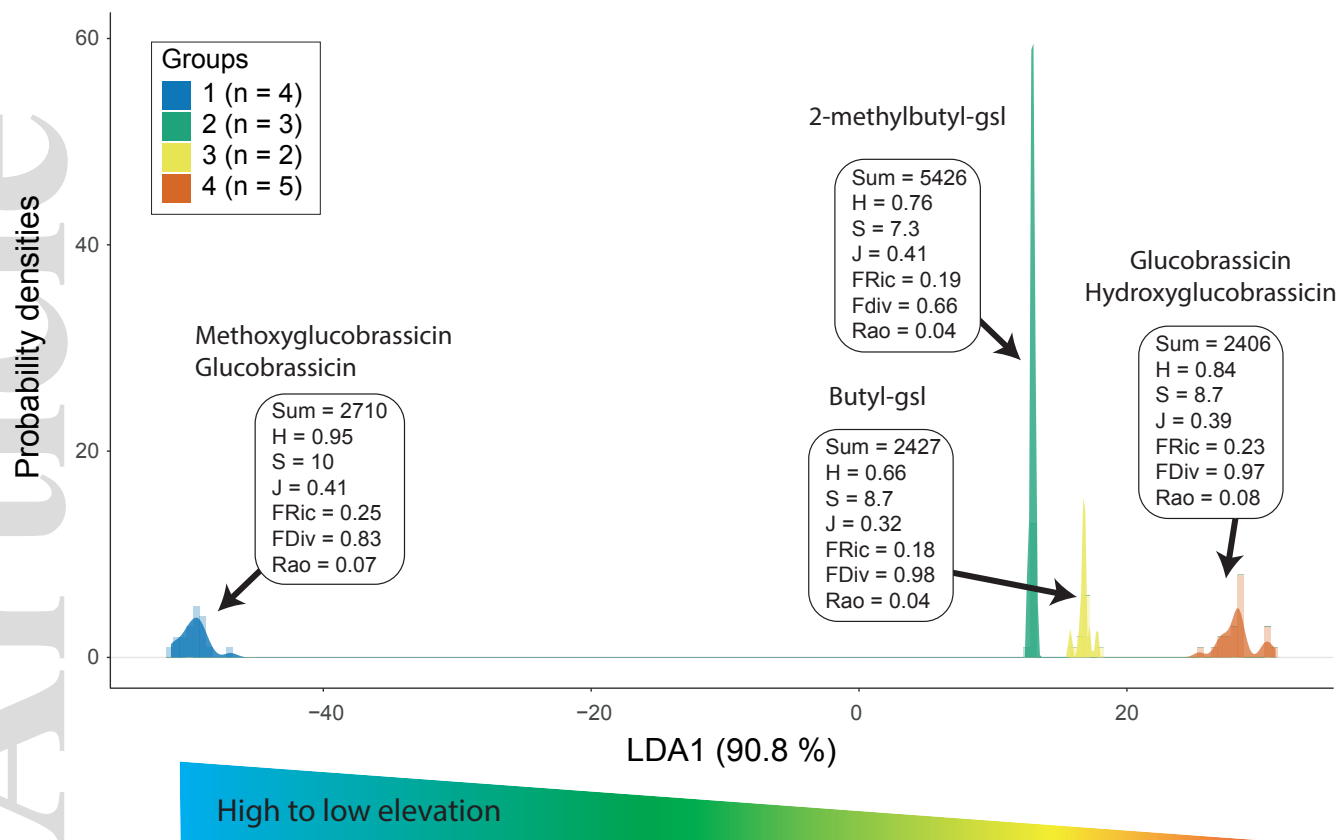
Figure 2. Coinertia analysis figure based on correlated structure between the matrix of plant functional traits and the glucosinolate (GSL) matrix across species. Species are color-coded based on the assigned group. Individual GSLs are not shown to avoid confusion on the figure but are discriminated according to the groups in Fig. 3.

Figure 3. (a) Linear discriminant (LD) analysis of the differences in the distribution of leaf glucosinolate (GSL) profiles among the four groups of *Cardamine* species. Histograms show the distribution of discriminant scores of leaf GSL profiles produced by plant species across different groups. The first LD1 explains 90.8% of the between-group variance. n = the number of species in each group. Sum = total GSL abundance; H = chemical diversity based on Shannon diversity calculation; S = number of individual compounds; J = chemical evenness; F_{Div} = functional diversity; $FRic$ = functional richness; $RaoQ$ = functional RaoQ value.

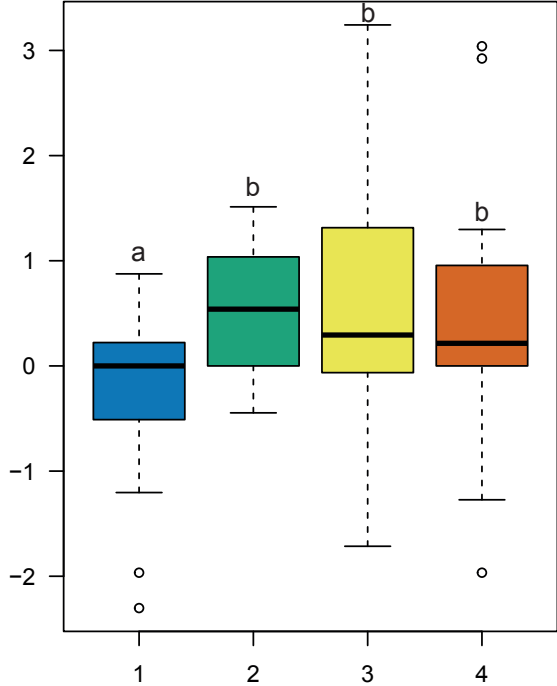
Figure 4. Boxplots representing the average growth of different herbivores across the different groups of *Cardamine* species. a) \ln of final weight minus initial weight for the specialist *Pieris brassicae* caterpillars; b) \ln of final weight minus initial weight for the generalist *Spodoptera littoralis* caterpillars; c) number of individual progenies of *Brevicoryne brassicae* specialist aphids, and d) number of individual progenies of *Myzus persicae* generalist aphids. Boxplot graphs represents the minimum, maximum, median, first quartile and third quartile of each growth rate variable across the different plant groups. Letters above boxplots represent significant differences among groups (post-hoc analysis with Tukey HSD test; $p < 0.05$).



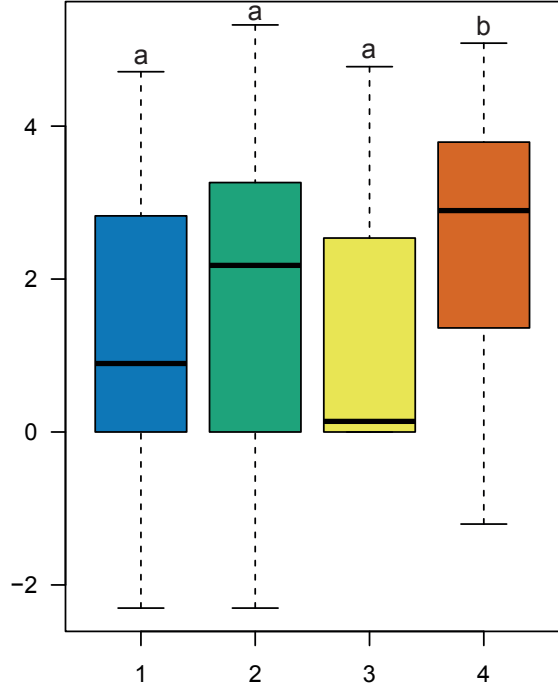




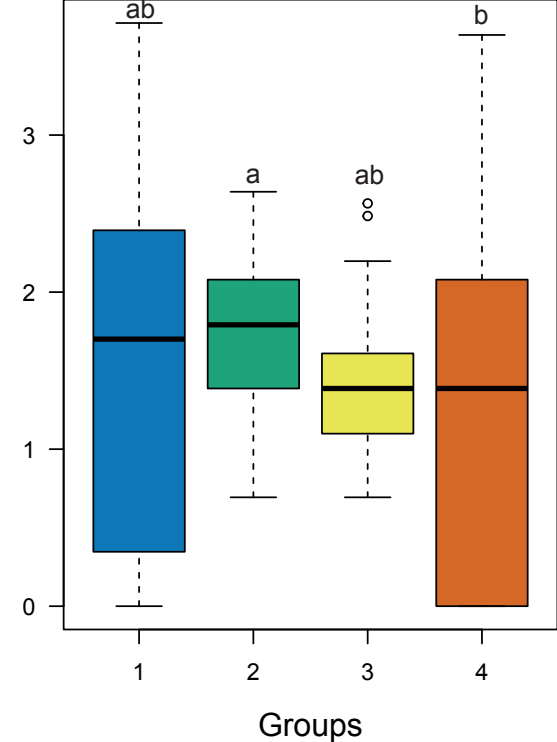
P. brassicae weight gain (ln (mg FW)) **a)**



S. littoralis weight gain (ln (mg FW)) **b)**



B. brassicae (number of individuals) **c)**



M. persicae (number of individuals) **d)**

